

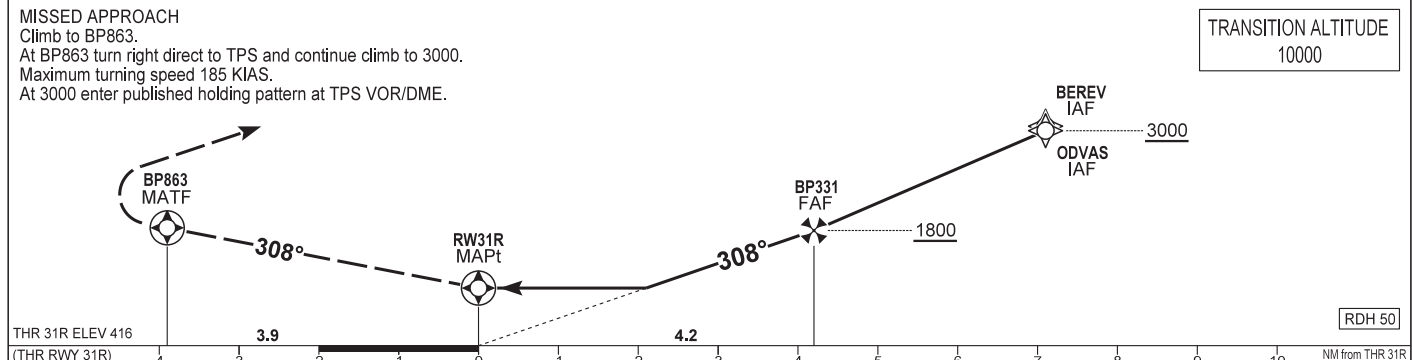
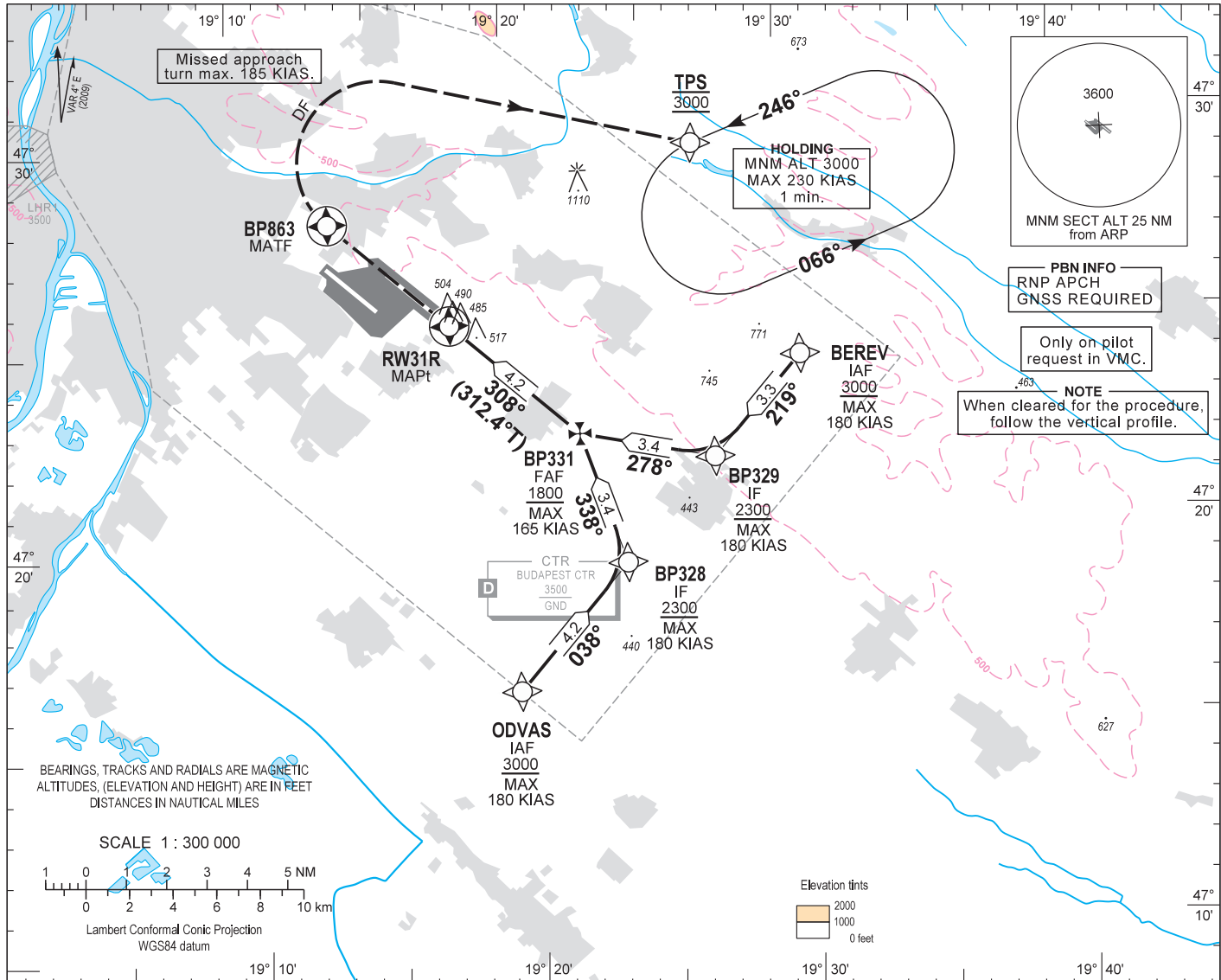
AIP HUNGARY

INSTRUMENT
APPROACH
CHART - ICAO

AERODROME ELEV 496
HEIGHTS RELATED TO
THR RWY 31R - ELEV 416

| | | | | |
|------------------------------|---------|---------|------------------------------|-------------------|
| BUDAPEST APP | 122.975 | 123.860 | BUDAPEST GROUND | 121.910 |
| BUDAPEST TOWER | 119.510 | 118.100 | BUDAPEST DELIVERY | 134.540 |
| BUDAPEST INFORMATION (NORTH) | | | ATIS | 132.380 (117,300) |
| | | | BUDAPEST INFORMATION (SOUTH) | 119.350 |

BUDAPEST/LISZT FERENC
RNP Y RWY 31R
(ACFT CAT A, B, C)



| | | | |
|----------------------|------------|---|---|
| OCA (H) | A | B | C |
| STRAIGHT-IN APPROACH | 1300 (890) | | |

| | | | | | |
|-------------------|----|------|------|------|------|
| DIST THR / RWY31R | NM | 6.0 | 5.0 | 4.0 | 3.0 |
| ALTITUDE | ft | 2380 | 2060 | 1740 | 1420 |

VISUAL APPROACH RWY 31R
VMC
CEILING - VISIBILITY
1500' AGL - 5 KM

Timing not authorized to define the MAPt.

| | | | | | | |
|-----------------------------|---------|------|------|------|------|------|
| GS | kt | 60 | 90 | 120 | 150 | 180 |
| BP331 - RWY31R (4.2 NM) | min:sec | 4:12 | 2:48 | 2:06 | 1:41 | 1:24 |
| Rate of descent (319 ft/NM) | ft/min | 320 | 480 | 640 | 800 | 960 |

AD 2 LHBP INSTRUMENT APPROACH CHART RNP Y RWY 31R

via BEREV

| PT | WP ID | Role | OverFly | Bearing/ (Len Dur) | Turn Direction | Altitude (FT) | IAS (KT) | VRT ANG | NAV PERF |
|----|-------|------|---------|-----------------------|----------------|---------------|----------|---------|----------|
| IF | BEREV | IAF | | | | +3000 | -180 | | RNP APCH |
| TF | BP329 | IF | | 222.5 T/3.3 NM | | +2300 | -180 | | RNP APCH |
| TF | BP331 | FAF | Y | 282.5 T/3.4 NM | | +1800 | -165 | | RNP APCH |
| TF | RW31R | MAPt | Y | 312.4 T/4.2 NM | | +466 | | | RNP APCH |
| TF | BP863 | MATF | Y | 312.4 T/3.9 NM | | | | | RNP APCH |
| DF | TPS | | | | R | @3000 | -185 | | RNP APCH |
| HM | TPS | MAHF | | 250.0 T/1 min | L | @3000 | -230 | | RNP APCH |

via ODVAS

| PT | WP ID | Role | OverFly | Bearing/ (Len Dur) | Turn Direction | Altitude (FT) | IAS (KT) | VRT ANG | NAV PERF |
|----|-------|------|---------|-----------------------|----------------|---------------|----------|---------|----------|
| IF | ODVAS | IAF | | | | +3000 | -180 | | RNP APCH |
| TF | BP328 | IF | | 042.5 T/4.2 NM | | +2300 | -180 | | RNP APCH |
| TF | BP331 | FAF | Y | 342.5 T/3.4 NM | | +1800 | -165 | | RNP APCH |
| TF | RW31R | MAPt | Y | 312.4 T/4.2 NM | | +466 | | | RNP APCH |
| TF | BP863 | MATF | Y | 312.4 T/3.9 NM | | | | | RNP APCH |
| DF | TPS | | | | R | @3000 | -185 | | RNP APCH |
| HM | TPS | MAHF | | 250.0 T/1 min | L | @3000 | -230 | | RNP APCH |

WAYPOINT COORDINATES SEE: AD 2.22.