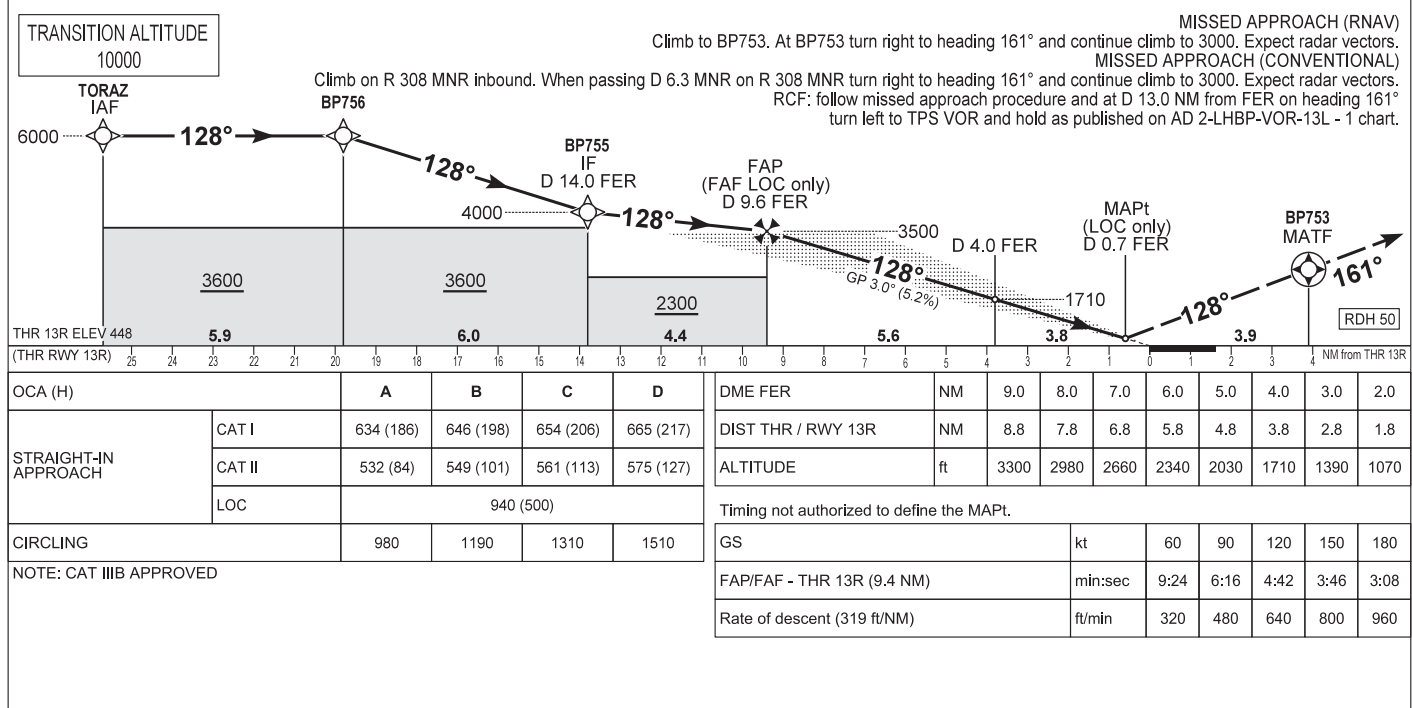
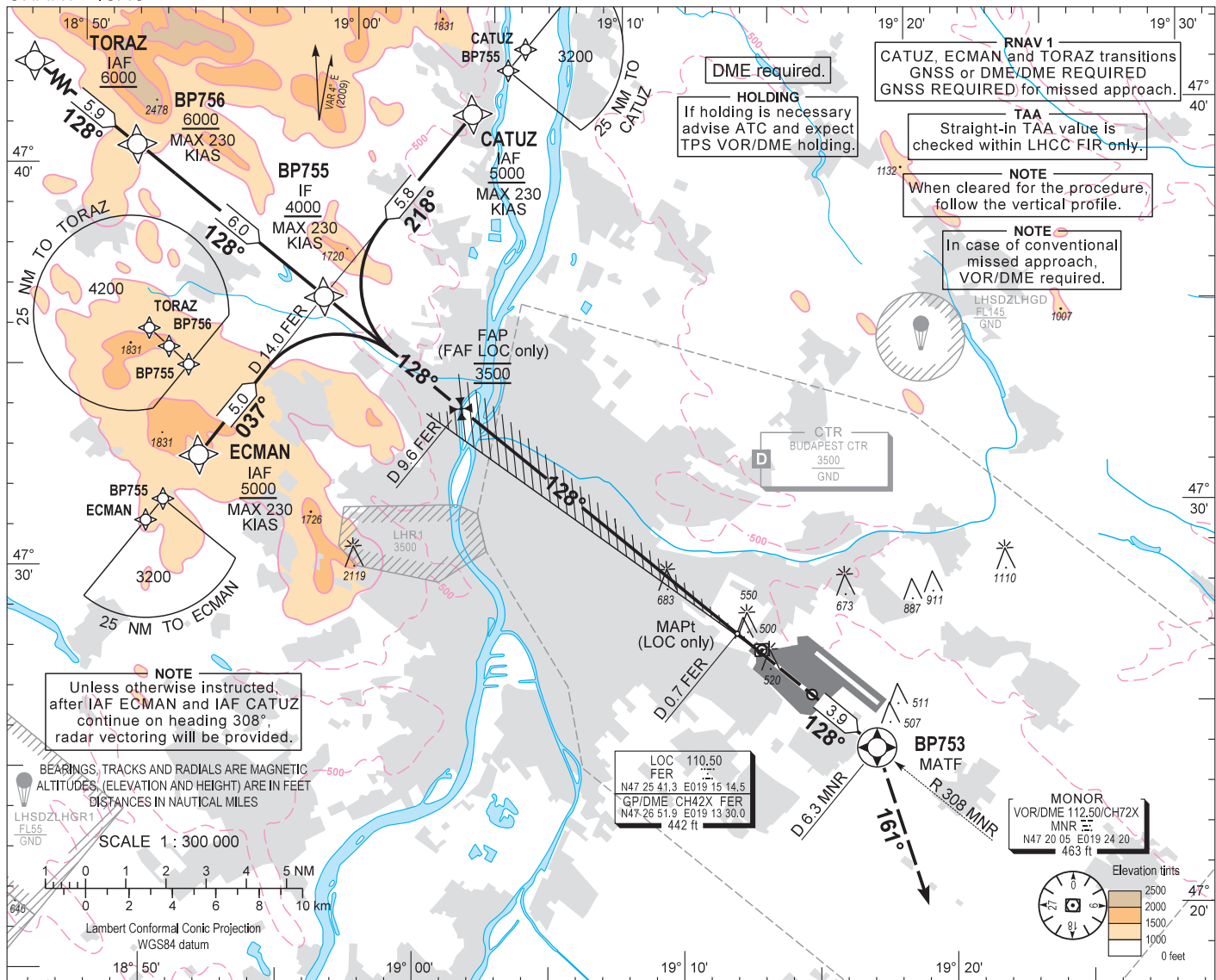


AIP HUNGARY

INSTRUMENT APPROACH CHART - ICAO
AERODROME ELEV 496
HEIGHTS RELATED TO THR RWY 13R - ELEV 448

BUDAPEST APP 122.975 123.860
BUDAPEST GROUND 121.910
BUDAPEST DELIVERY 134.540
BUDAPEST TOWER 118.100
ATIS 132.380 (117.300)
BUDAPEST INFORMATION (NORTH) 119.350

BUDAPEST/LISZT FERENC
ILS or LOC RWY 13R
(ACFT CAT A, B, C, D)



AD 2 LHBP INSTRUMENT APPROACH CHART ILS OR LOC RWY 13R

via TORAZ

| PT | WP ID | Role | OverFly | Bearing/ (Len Dur) | Turn Direction | Altitude (FT) | IAS (KT) | VRT ANG | NAV PERF |
|----|-------|------|---------|-----------------------|----------------|---------------|----------|---------|----------|
| IF | TORAZ | IAF | | | | +6000 | | | RNAV1 |
| TF | BP756 | | | 131.6 T/5.9 NM | | +6000 | -230 | | RNAV1 |
| TF | BP755 | IF | | 132.2 T/6.0 NM | | +4000 | -230 | | RNAV1 |
| CF | BP754 | FAF | | 132.4 T/4.4 NM | | @3500 | | | |
| CF | RW13R | LTP | Y | 132.2 T/9.4 NM | | +498 | | -3.0 | |
| TF | BP753 | MATF | Y | 132.3 T/3.9 NM | | | | | RNP APCH |
| VM | | | | 165.0 T | | @3000 | | | |

via CATUZ

| PT | WP ID | Role | OverFly | Bearing/ (Len Dur) | Turn Direction | Altitude (FT) | IAS (KT) | VRT ANG | NAV PERF |
|----|-------|------|---------|-----------------------|----------------|---------------|----------|---------|----------|
| IF | CATUZ | IAF | | | | +5000 | -230 | | RNAV1 |
| TF | BP755 | IF | | 222.3 T/5.8 NM | | +4000 | -230 | | RNAV1 |
| CF | BP754 | FAF | | 132.4 T/4.4 NM | | @3500 | | | |
| CF | RW13R | LTP | Y | 132.2 T/9.4 NM | | +498 | | -3.0 | |
| TF | BP753 | MATF | Y | 132.3 T/3.9 NM | | | | | RNP APCH |
| VM | | | | 165.0 T | | @3000 | | | |

via ECMAN

| PT | WP ID | Role | OverFly | Bearing/ (Len Dur) | Turn Direction | Altitude (FT) | IAS (KT) | VRT ANG | NAV PERF |
|----|-------|------|---------|-----------------------|----------------|---------------|----------|---------|----------|
| IF | ECMAN | IAF | | | | +5000 | -230 | | RNAV1 |
| TF | BP755 | IF | | 041.4 T/5.0 NM | | +4000 | -230 | | RNAV1 |
| CF | BP754 | FAF | | 132.4 T/4.4 NM | | @3500 | | | |
| CF | RW13R | LTP | Y | 132.2 T/9.4 NM | | +498 | | -3.0 | |
| TF | BP753 | MATF | Y | 132.3 T/3.9 NM | | | | | RNP APCH |
| VM | | | | 165.0 T | | @3000 | | | |

WAYPOINT COORDINATES SEE: AD 2.22.