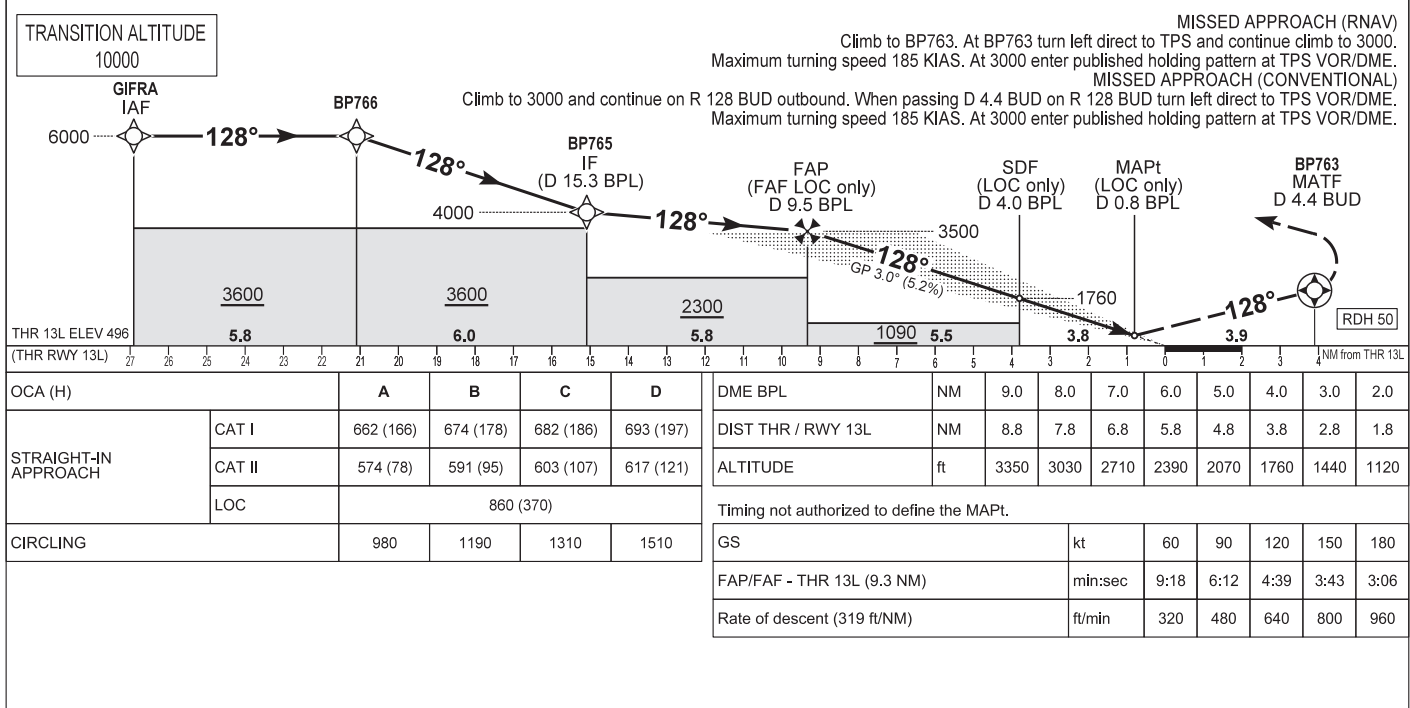
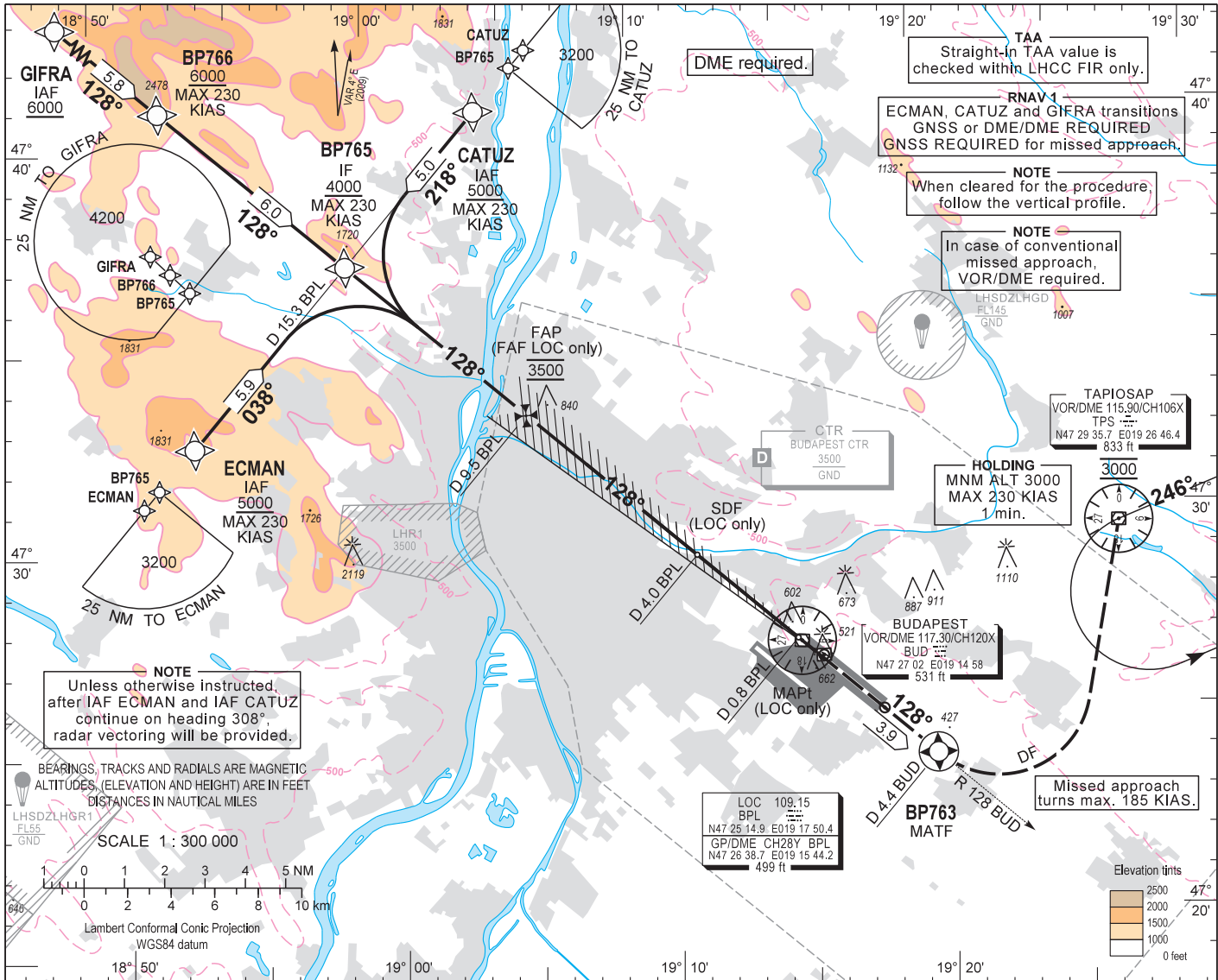


AIP HUNGARY

INSTRUMENT APPROACH CHART - ICAO
AERODROME ELEV 496
HEIGHTS RELATED TO THR RWY 13L - ELEV 496

BUDAPEST APP 122.975 123.860
BUDAPEST GROUND 121.910
BUDAPEST TOWER 118.100
BUDAPEST DELIVERY 134.540
BUDAPEST INFORMATION (NORTH) 119.350
ATIS 132.380 (117.300)

BUDAPEST/LISZT FERENC
ILS or LOC RWY 13L
(ACFT CAT A, B, C, D)



AD 2 LHBP INSTRUMENT APPROACH CHART ILS OR LOC 13L

via GIFRA

| PT | WP ID | Role | OverFly | Bearing/ (Len Dur) | Turn Direction | Altitude (FT) | IAS (KT) | VRT ANG | NAV PERF |
|----|-------|------|---------|-----------------------|----------------|---------------|----------|---------|----------|
| IF | GIFRA | IAF | | | | +6000 | | | RNAV1 |
| TF | BP766 | | | 132.1 T/5.8 NM | | +6000 | -230 | | RNAV1 |
| TF | BP765 | IF | | 132.2 T/6.0 NM | | +4000 | -230 | | RNAV1 |
| CF | BP764 | FAF | | 132.2 T/5.8 NM | | @3500 | | | |
| CF | RW13L | LTP | Y | 132.4 T/9.3 NM | | +546 | | -3.0 | |
| TF | BP763 | MATF | Y | 132.4 T/3.9 NM | | | -185 | | RNP APCH |
| DF | TPS | | | | L | @3000 | -185 | | RNP APCH |
| HM | TPS | MAHF | | 250.0 T/1 min | L | @3000 | -230 | | RNP APCH |

via ECMAN

| PT | WP ID | Role | OverFly | Bearing/ (Len Dur) | Turn Direction | Altitude (FT) | IAS (KT) | VRT ANG | NAV PERF |
|----|-------|------|---------|-----------------------|----------------|---------------|----------|---------|----------|
| IF | ECMAN | IAF | | | | +5000 | -230 | | RNAV1 |
| TF | BP765 | IF | | 041.5 T/5.9 NM | | +4000 | -230 | | RNAV1 |
| CF | BP764 | FAF | | 132.2 T/5.8 NM | | @3500 | | | |
| CF | RW13L | LTP | Y | 132.4 T/9.3 NM | | +546 | | -3.0 | |
| TF | BP763 | MATF | Y | 132.4 T/3.9 NM | | | -185 | | RNP APCH |
| DF | TPS | | | | L | @3000 | -185 | | RNP APCH |
| HM | TPS | MAHF | | 250.0 T/1 min | L | @3000 | -230 | | RNP APCH |

via CATUZ

| PT | WP ID | Role | OverFly | Bearing/ (Len Dur) | Turn Direction | Altitude (FT) | IAS (KT) | VRT ANG | NAV PERF |
|----|-------|------|---------|-----------------------|----------------|---------------|----------|---------|----------|
| IF | CATUZ | IAF | | | | +5000 | -230 | | RNAV1 |
| TF | BP765 | IF | | 222.3T/5.0 NM | | +4000 | -230 | | RNAV1 |
| CF | BP764 | FAF | | 132.2 T/5.8 NM | | @3500 | | | |
| CF | RW13L | LTP | Y | 132.4 T/9.3 NM | | +546 | | -3.0 | |
| TF | BP763 | MATF | Y | 132.4 T/3.9 NM | | | -185 | | RNP APCH |
| DF | TPS | | | | L | @3000 | -185 | | RNP APCH |
| HM | TPS | MAHF | | 250.0 T/1 min | L | @3000 | -230 | | RNP APCH |

WAYPOINT COORDINATES SEE: AD 2.22.