

AERODROME CHART - ICAO

RWY	DIRECTION	THR	BEARING	STRENGTH	TORA	TODA	ASDA	LDA
13R	128°	N47 26 55, E019 13 15	PCN 75/R/A/X/T		3009	3009	3009	3009
31L	308°	N47 25 50, E019 15 01	PCN 75/R/A/X/T		3009	3009	3009	3009
13L	128°	N47 26 44, E019 15 27	PCN 90/R/A/X/T		3707	3707	3707	3707
31R	308°	N47 25 23, E019 17 38	PCN 90/R/A/X/T		3707	3707	3707	3707

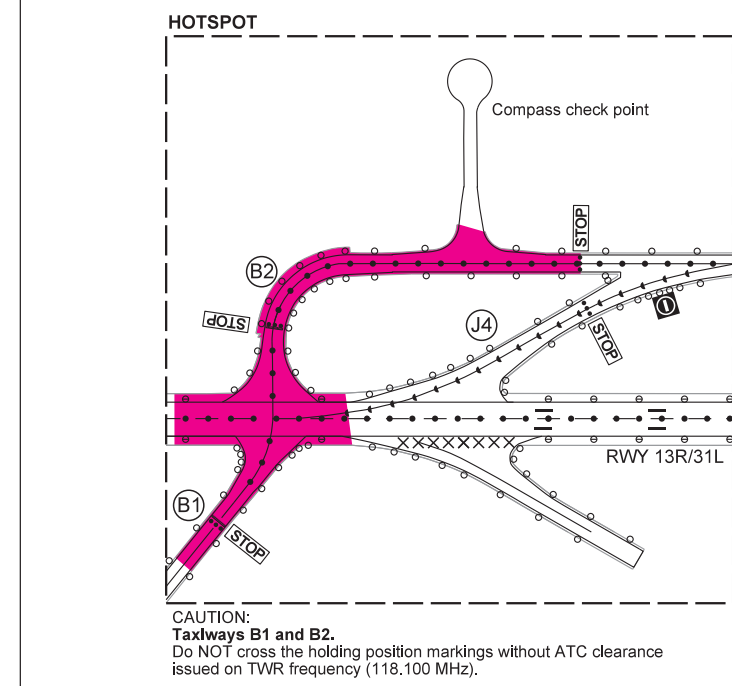
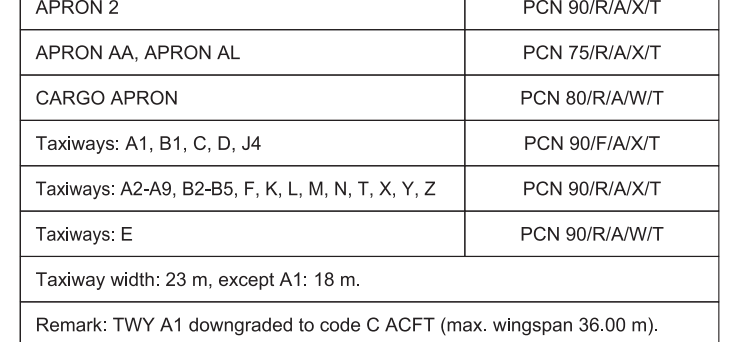
APRON 1, APRON AG	PCN 60/R/A/X/T
APRON 2	PCN 90/R/A/X/T
APRON AA, APRON AL	PCN 75/R/A/X/T
CARGO APRON	PCN 80/R/A/W/T
Taxiways: A1, B1, C, D, J4	PCN 90/F/A/X/T
Taxiways: A2-A9, B2-B5, F, K, L, M, N, T, X, Y, Z	PCN 90/R/A/X/T
Taxiways: E	PCN 90/R/A/W/T

Taxiway width: 23 m, except A1: 18 m.
Remark: TWY A1 upgraded to code C ACFT (max. wingspan 36.00 m).

ARP
N47 26 22
E019 15 43
AERODROME ELEV 496

BUDAPEST APP	122.975	BUDAPEST TOWER	118.100	BUDAPEST APRON 1	131.555
	123.860	BUDAPEST GROUND	121.910	BUDAPEST APRON 2	122.440
	119.510	BUDAPEST DELIVERY	134.540	ATIS	132.380
BUDAPEST INFORMATION (NORTH)		BUDAPEST DELIVERY	119.350	ATIS (BUD VOR)	117.300

BUDAPEST/LISZT FERENC



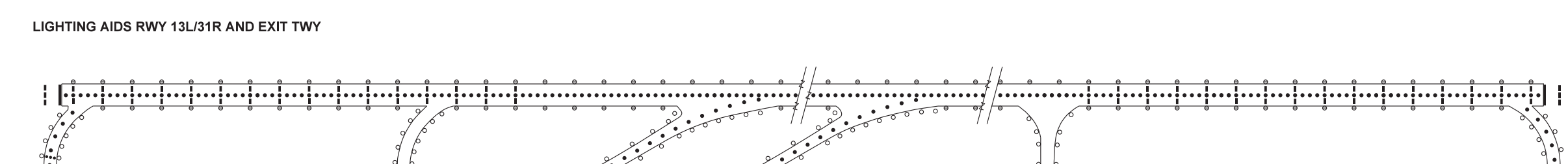
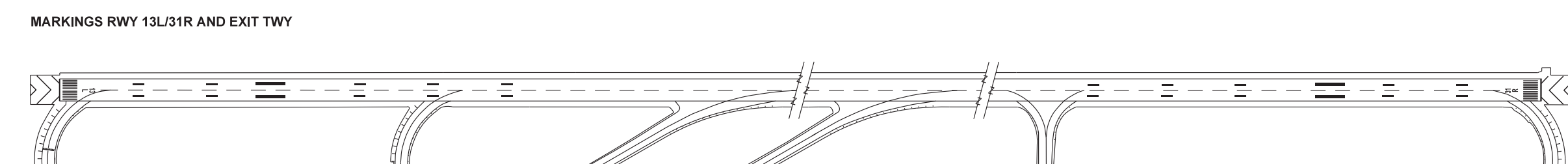
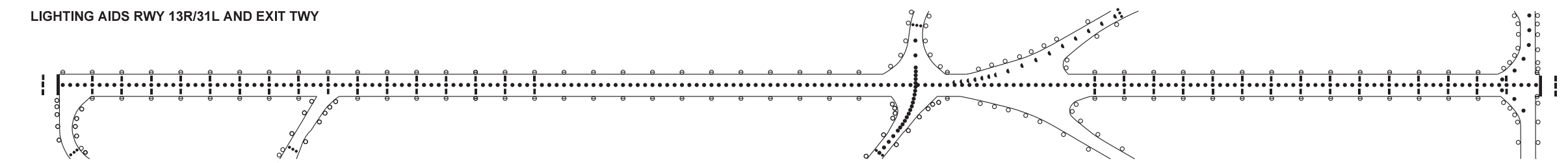
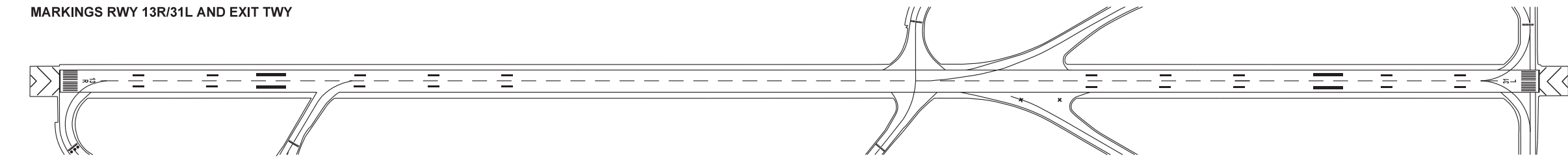
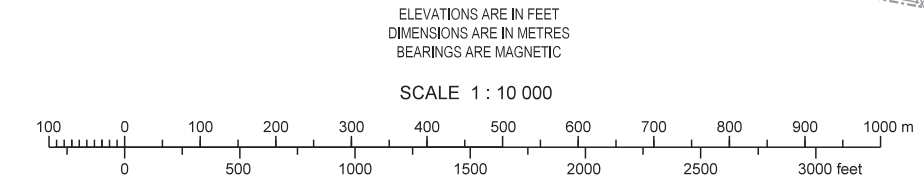
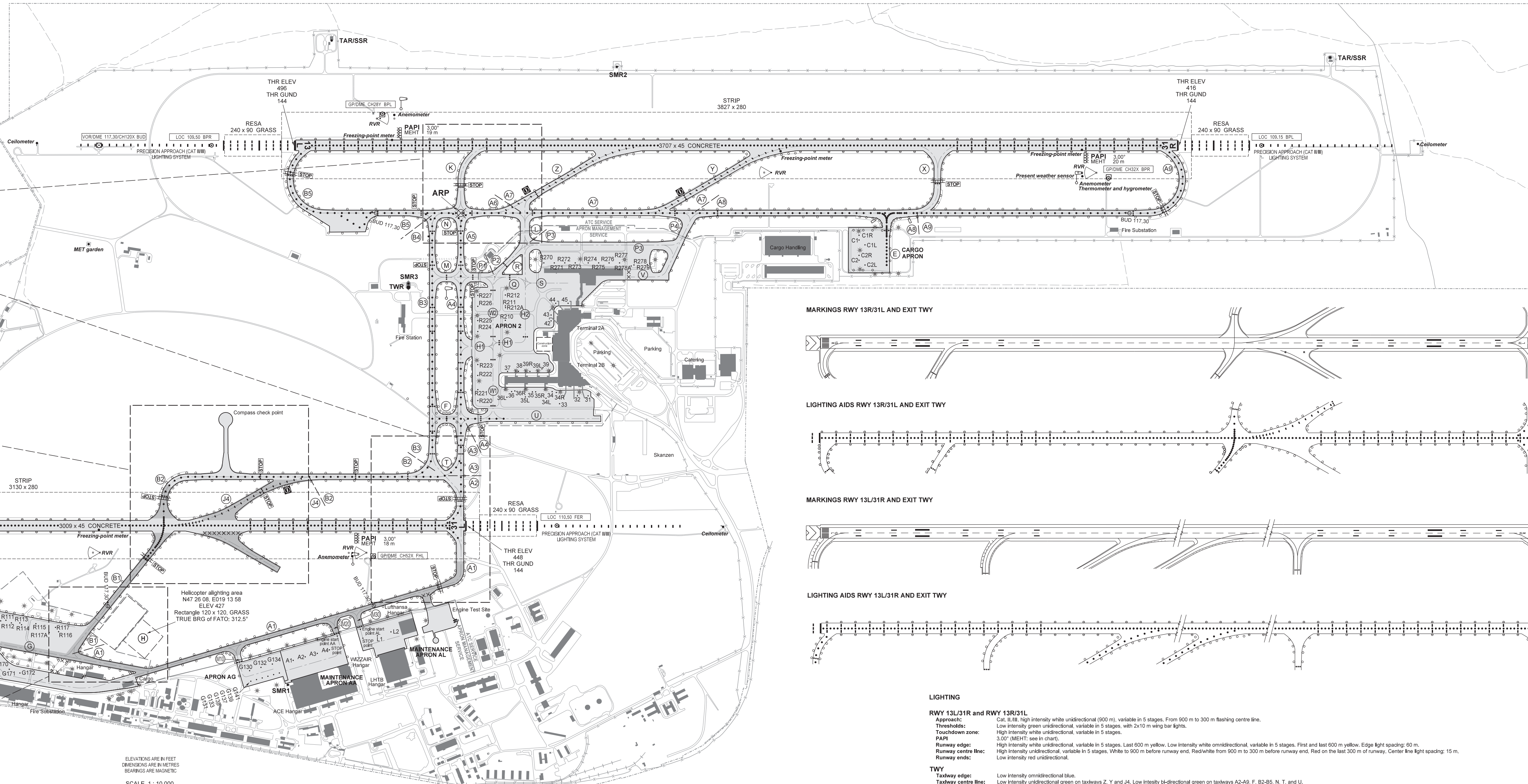
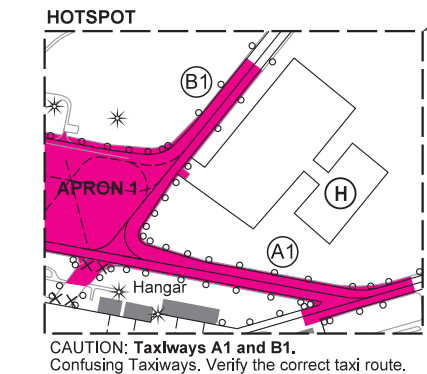
FOR BASIC CHART SYMBOLS SEE: GEN 2.3.
INS COORDINATES FOR AIRCRAFT STANDS SEE: PDC CHARTS.
TAXI PROCEDURES SEE: AD 2-LHBP-TAXI CHARTS.

VISUAL DOCKING GUIDANCE SYSTEM:
SAFEDOCK T2 AT PARKING POSITION: 31, 32, 33, 34, 34LR, 35, 35LR, 36, 36R, 37, 38, 39R AND 42, 43, 44, 45.

APRON ELEVATIONS: NOT AVAILABLE.
THE HIGHEST ELEVATIONS OF TDZ: NOT AVAILABLE.
GEOGRAPHICAL COORDINATES FOR TWY CENTRE LINES: NOT AVAILABLE.
OBSTACLES TO TAXING: NOT AVAILABLE.

RWY	TWY	TORA	TODA	ASDA
13L	K	2950	2950	2950
31R	X	2650	2650	2650
13R	C	705	705	705
	K	705	705	705
	C	2450	2450	2450
	B1	1200	1200	1200
	B2	1200	1200	1200
	B1	1800	1800	1800
	B2	1800	1800	1800
	C	505	505	505

- LEGEND**
- Approach lighting bar
 - Approach lighting barrette
 - ⊙ PAPI
 - ⊙ RWY edge light (combined omnidirectional and bi-directional)
 - RWY and TWY centre line light (bi-directional)
 - TWY centre line light (unidirectional)
 - Omnidirectional TWY edge light
 - * Flood lighting



- LIGHTING**
- RWY 13L/31R and RWY 13R/31L**
- Approach:** Cat. II/III, High intensity white unidirectional (900 m), variable in 5 stages. From 900 m to 300 m flashing centre line.
 - Thresholds:** Low intensity green unidirectional, variable in 5 stages, with 2x10 m wing bar lights.
 - Touchdown zone:** High intensity white unidirectional, variable in 5 stages.
 - PAPI:** 3.00° (MEHT; see in chart).
 - Runway edge:** High intensity white unidirectional, variable in 5 stages. Last 600 m yellow. Low intensity white omnidirectional, variable in 5 stages. First and last 600 m yellow. Edge light spacing: 60 m.
 - Runway centre line:** High intensity unidirectional, variable in 5 stages. White to 900 m before runway end. Red/white from 900 m to 300 m before runway end. Red on the last 300 m of runway. Center line light spacing: 15 m.
 - Runway ends:** Low intensity red unidirectional.
- TWY**
- Taxiway edge:** Low intensity omnidirectional blue.
 - Taxiway centre line:** Low intensity unidirectional green on taxiways Z, Y and J4. Low intensity bi-directional green on taxiways A2-A9, F, B2-B5, N, T, and U.
 - STOP bars:** Unidirectional red.
 - Apron:** Low intensity red edge lights and floodlights.
 - Obstacle light:** Low intensity red.

THIS PAGE IS INTENTIONALLY LEFT BLANK