

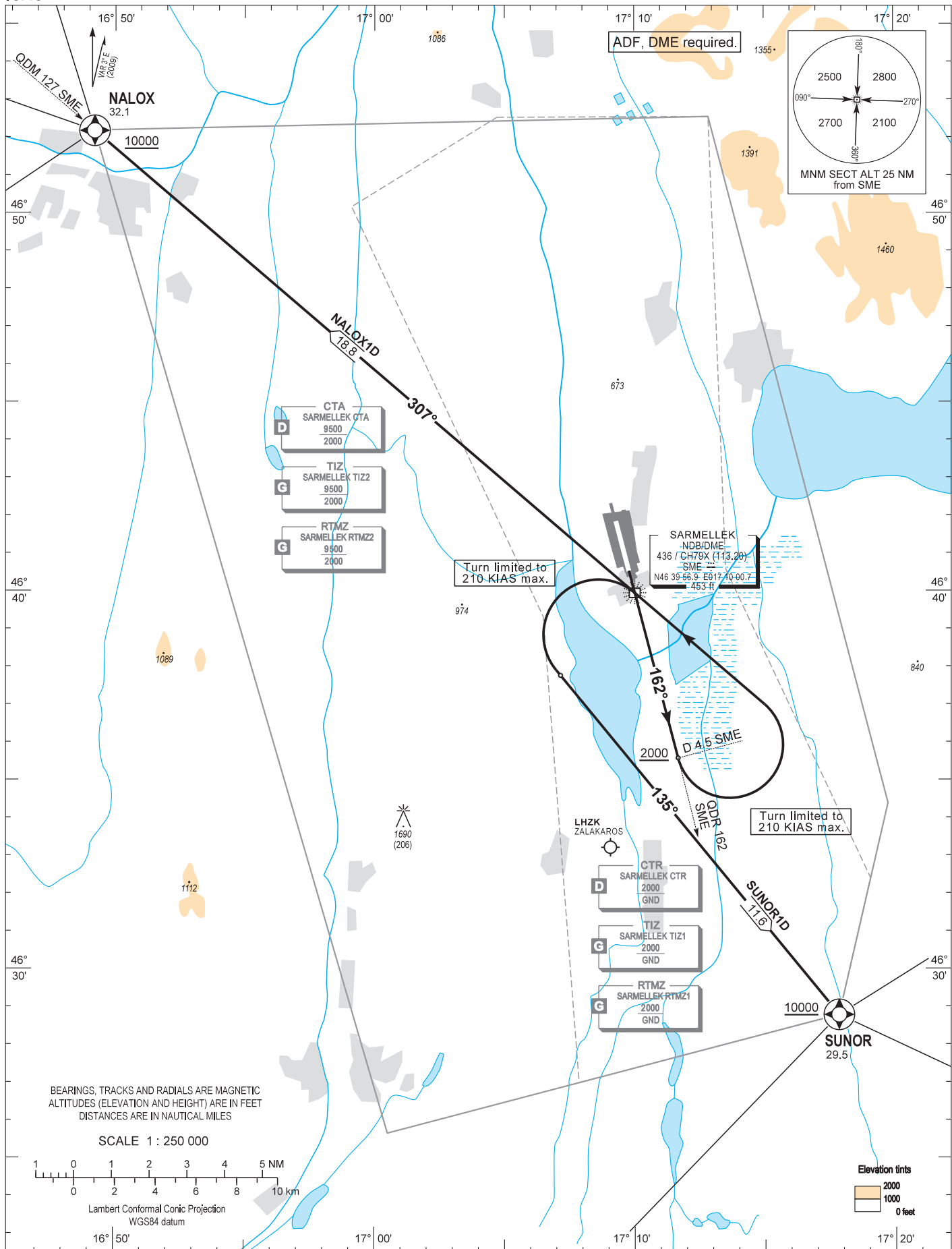
AIP HUNGARY

STANDARD DEPARTURE CHART -  
INSTRUMENT (SID) -  
ICAO

TRANSITION ALTITUDE  
10000

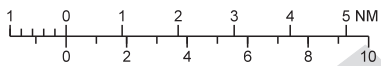
BALATON TOWER 134.585  
BALATON INFO 134.585  
BUDAPEST INFORMATION (WEST) 125.500

HÉVÍZ/BALATON  
RWY 16  
NALOX1D SUNOR1D



BEARINGS, TRACKS AND RADIALS ARE MAGNETIC  
ALTITUDES (ELEVATION AND HEIGHT) ARE IN FEET  
DISTANCES ARE IN NAUTICAL MILES

SCALE 1 : 250 000



Lambert Conformal Conic Projection  
WGS84 datum

Elevation tints  
2000  
1000  
0 feet

**AD 2 LHSM STANDARD DEPARTURE CHART INSTRUMENT RWY 16**

NAME	PROCEDURE
<b>NALOX1D</b> (32.1)	After departure continue RWY HDG. Climb to 10000 or above by ATC. Cross D 4.5 SME DME at 2000 or above then turn left and proceed direct to SME NDB. (Turn limited to 210 KIAS max.) After crossing SME NDB fly on QDR 307 SME NDB proceeding to NALOX. When passing 9000 change QNH setting for Budapest QNH provided by BALATON INFO or BUDAPEST INFORMATION. Cross NALOX at 10000 or above (only by ATC clearance).
<b>SUNOR1D</b> (29.5)	After departure continue RWY HDG. Climb to 10000 or above by ATC. Cross D 4.5 SME DME at 2000 or above then turn left and proceed direct to SME NDB. (Turn limited to 210 KIAS MAX.) After crossing SME NDB turn left to track 135°proceeding to SUNOR. When passing 9000 change QNH setting for Budapest QNH provided by BALATON INFO or BUDAPEST INFORMATION. Cross SUNOR at 10000 or above (only by ATC clearance).