

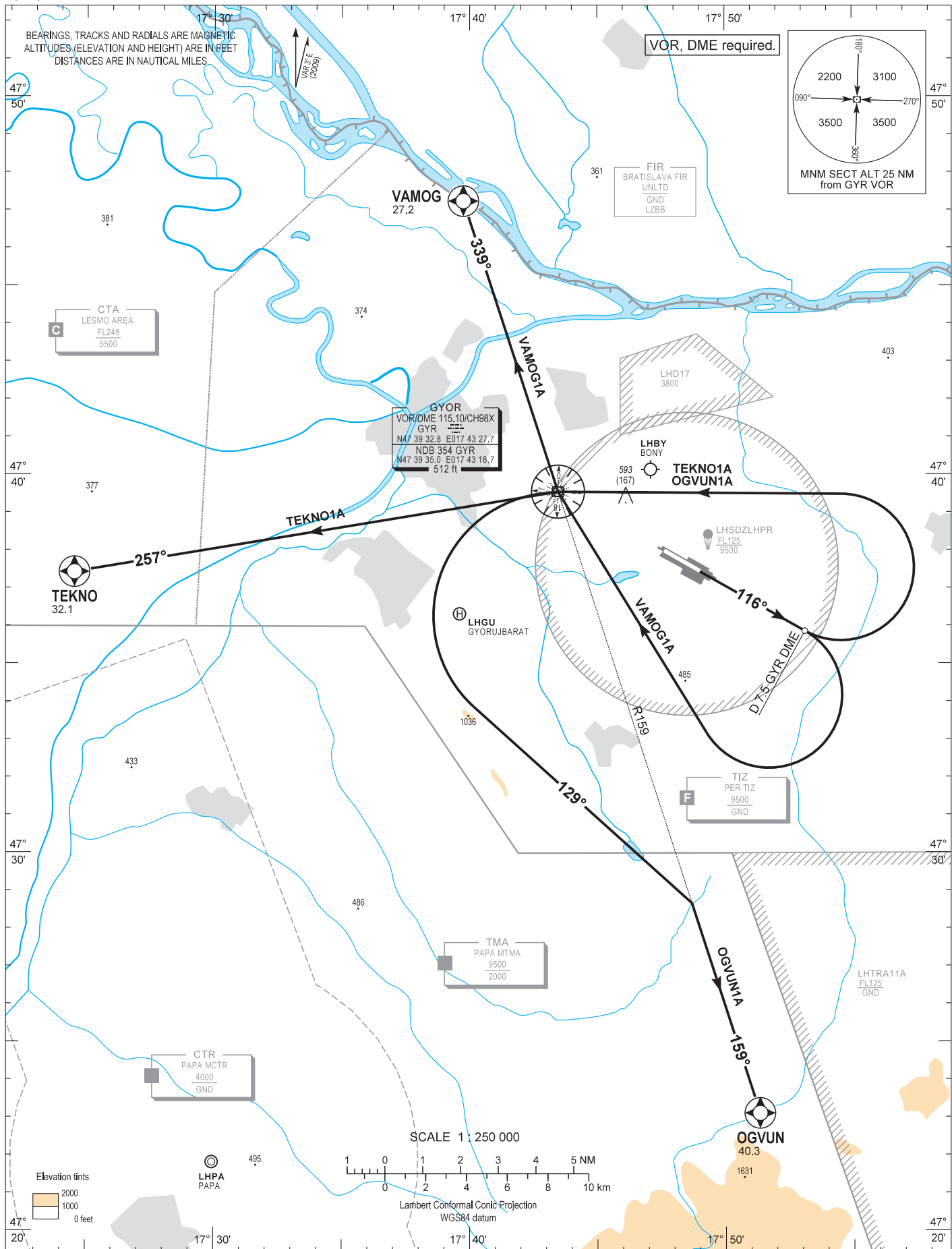
AIP HUNGARY

STANDARD DEPARTURE CHART -  
INSTRUMENT (SID) -  
ICAO

TRANSITION ALTITUDE  
10000

PÉR INFO 129.910  
BUDAPEST INFORMATION (WEST) 125.500

GYÖR/PÉR  
RWY 12  
OGVUN1A TEKNO1A VAMOG1A



**AD 2 LHPR STANDARD DEPARTURE CHART INSTRUMENT RWY 12**

<b>NAME</b> (length)	<b>PROCEDURE</b>	<b>CLIMBING</b>
<b>VAMOG1A</b> (27.2)	RWY HDG to D 7.5 GYR DME then turn right direct to GYR. At GYR intercept radial 339° outbound to VAMOG.	Climb initially 9000 AMSL. Further climb only by ATC.
<b>TEKNO1A</b> (32.1)	RWY HDG to D 7.5 GYR DME then turn left direct to GYR. At GYR intercept radial 257° outbound to TEKNO.	
<b>OGVUN1A</b> (40.3)	RWY HDG to D 7.5 GYR DME then turn left direct to GYR. At GYR turn left to intercept radial 159° outbound to OGVUN.	