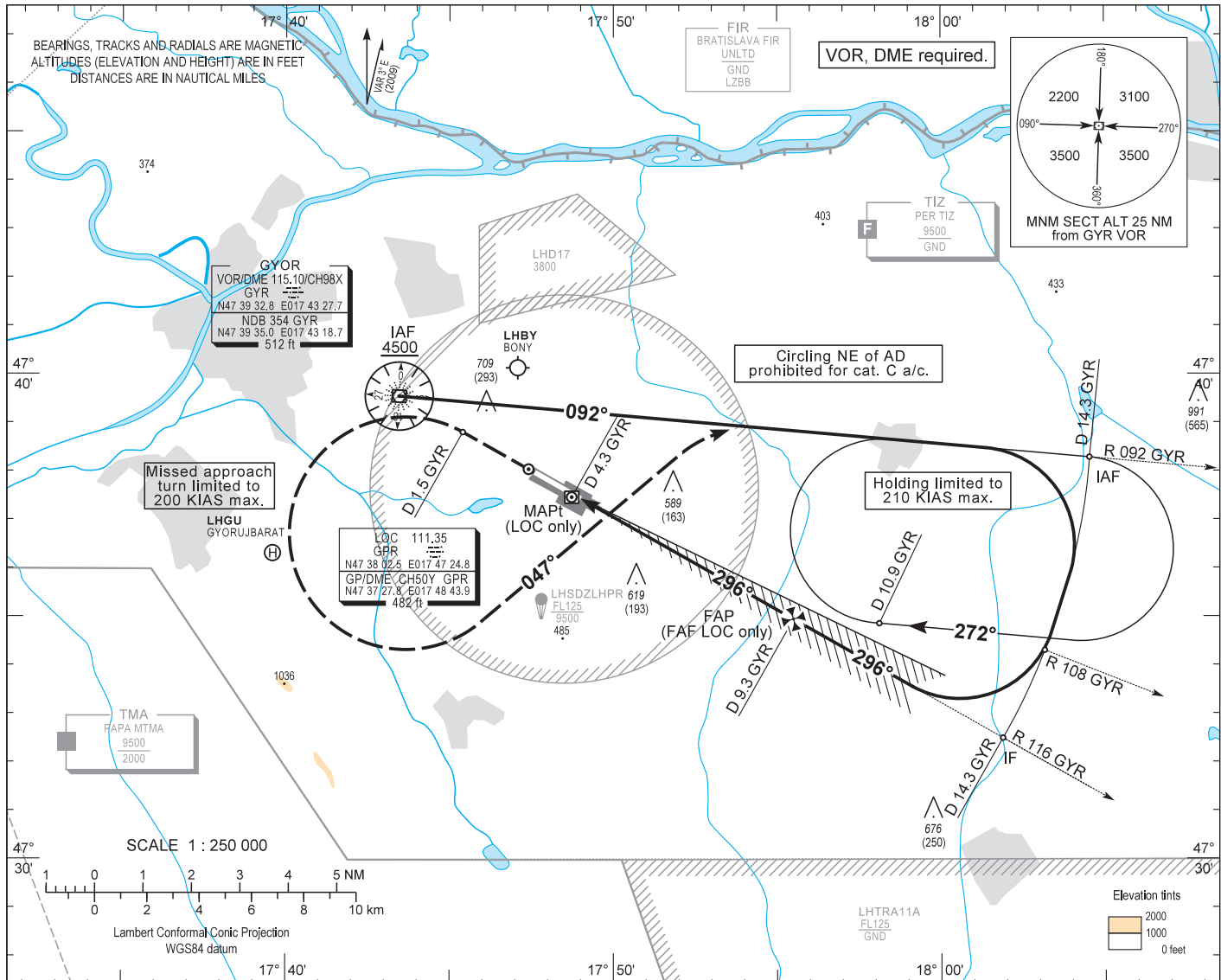


AIP HUNGARY

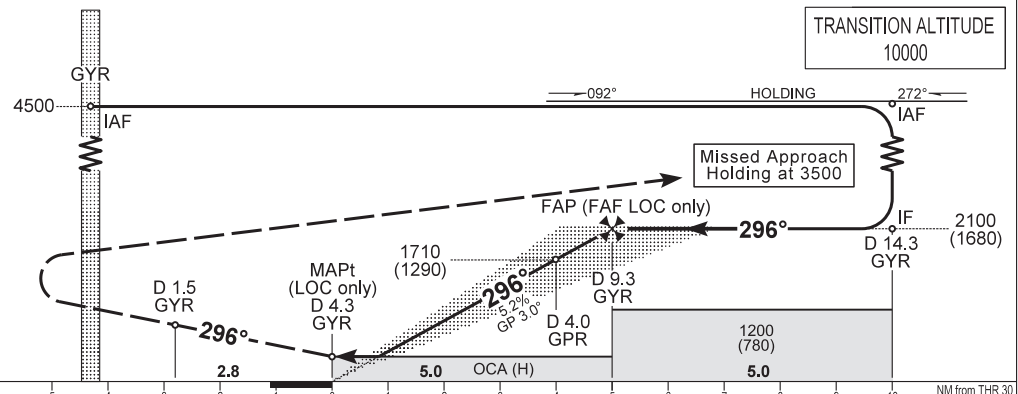
INSTRUMENT APPROACH CHART - ICAO  
AERODROME ELEV 426  
HEIGHTS RELATED TO THR RWY 30 - ELEV 426

PÉR INFO 129.910  
BUDAPEST INFORMATION (WEST) 125.500

GYŐR/PÉR  
ILS or LOC RWY 30  
(ACFT CAT A, B, C)



MISSED APPROACH  
Continuous climb to 3500.  
Straight ahead, then at D 1.5 GYR turn left to track 047° to intercept R 092 GYR VOR outbound and hold.



OCA (H)		A	B	C
STRAIGHT-IN APPROACH	Cat. I. Press. ALT	561 (135)	569 (143)	579 (153)
	LOC only	770 (350)		
CIRCLING APPROACH	ft AMSL	890 (470)	930 (510)	1140 (720) SW of AD only
	VIS. m	1900	2800	3700

CDFA with GYR DME	NM	9.0	8.0	7.0	6.0	5.0		
		ALT	ft	2010	1680	1360	1030	710
		(HGT)	ft	(1580)	(1260)	(930)	(610)	(280)

Timing not authorized to define the MAPt.

GROUND SPEED	kt	70	100	130	160
FAF - MAPt 5.0 NM	MIN:sec	4:17	3:00	2:18	1:53
VSP	ft/min	380	540	710	870

**AD 2 LHPR INSTRUMENT APPROACH CHART ILS OR LOC RWY 30**

FIX	LATITUDE	LONGITUDE	FIX FORMATION
<b>IAF</b>	N47 39 32.8	E017 43 27.7	GYR VOR
<b>IAF</b>	N47 38 17.1	E018 04 32.0	R 092 GYR VOR / D 14.3 GYR DME
<b>IF</b>	N47 32 30.2	E018 01 51.4	R 116 GYR VOR / D 14.3 GYR DME
<b>FAP</b>	N47 34 57.3	E017 55 28.6	R 116 GYR VOR / D 9.4 GYR DME
<b>FAF LOC only</b>	N47 34 58.2	E017 55 26.1	R 116 GYR VOR / D 9.3 GYR DME
<b>MAPt LOC only</b>	N47 37 25.9	E017 49 00.0	R 116 GYR VOR / D 4.3 GYR DME
<b>MA TP</b>	N47 38 48.4	E017 45 23.7	R 116 GYR VOR / D 1.5 GYR DME

**Approach holding procedure:**

Holding fix: GYR VOR R 092 / D 14.3.

Maximum speed: 210 KIAS  
 Inbound track: 092°  
 Outbound track: 272°  
 Turns: Right  
 Outbound timing: 1 min.  
 Minimum holding altitude: 4500 (3500 for Missed Approach)  
 MOCA: 2000  
 Entry: Sector 1 (parallel) and Sector 2 (offset) entries prohibited

Final approach descent (LOC only): 3.06°