

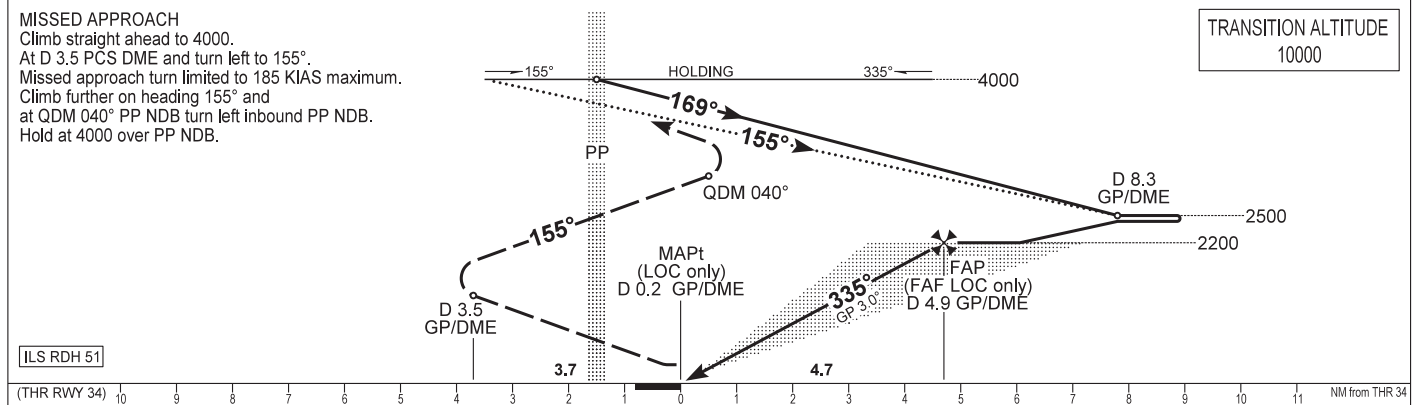
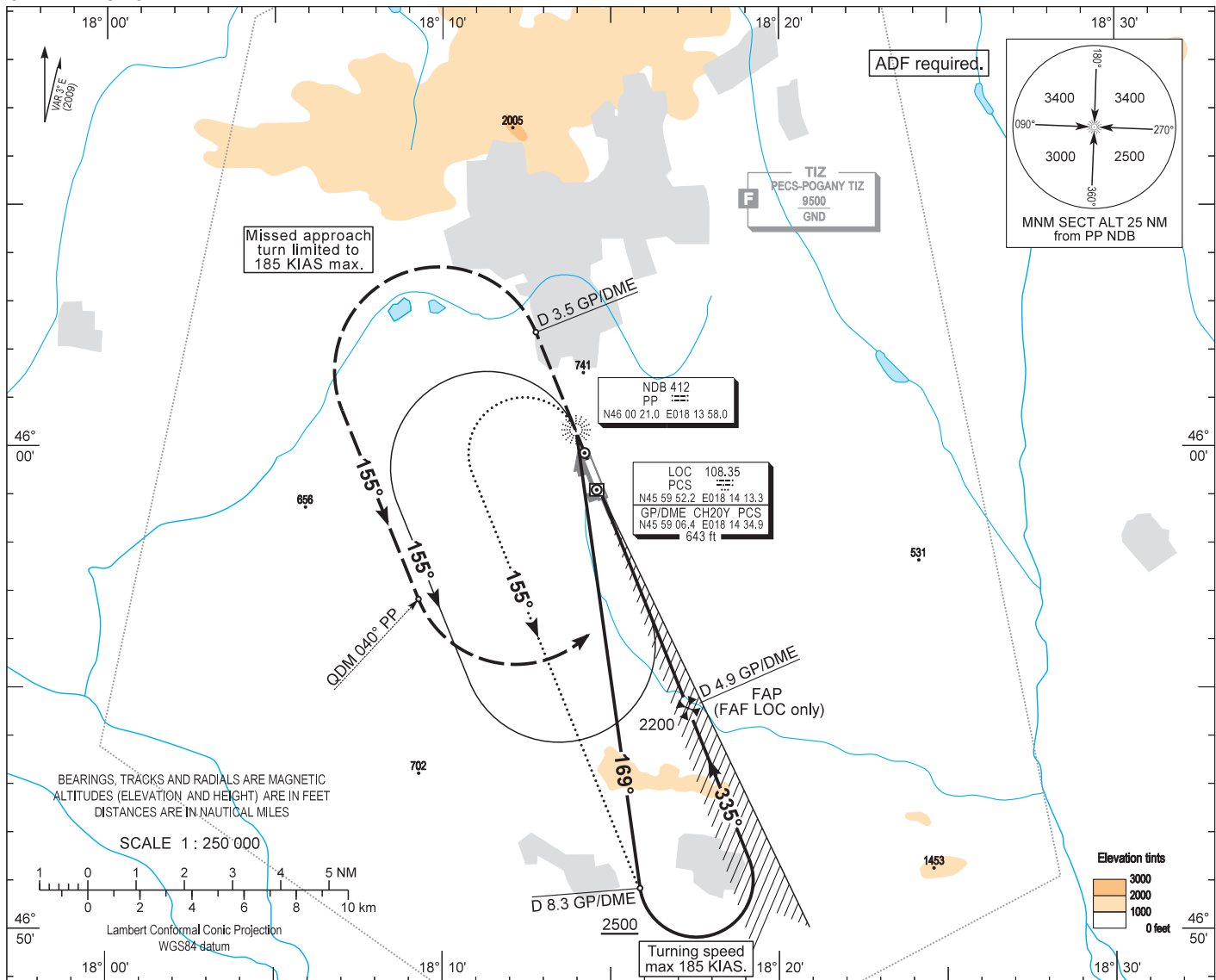
AIP HUNGARY

INSTRUMENT
APPROACH
CHART - ICAO

AERODROME ELEV 651
HEIGHTS RELATED TO
THR RWY 34 - ELEV 640

POGÁNY INFO 126.915
BUDAPEST INFORMATION (WEST) 125.500

PÉCS/POGÁNY
ILS or LOC RWY 34
(ACFT CAT A, B, C, D)



OCA (OCH)		A	B	C	D	GROUND SPEED				
STRAIGHT-IN APPROACH	Cat. I.	776 (136)	784 (144)	794 (154)	801 (161)	kt				
	LOC	900 (260)				60	90	120	150	180
CIRCLING APPROACH	ft AMSL	1220	1220	1440	1730	MIN:sec				
	VIS. m	1900	2800	3700	4600	ft / MIN				
						Rate of descent (5.2%)				
						4:42	3:07	2:21	1:53	1:34
						320	480	635	795	955

AD 2 LHPP INSTRUMENT APPROACH CHART ILS OR LOC RWY 34

Arrivals on 139° - 199° may enter the base turn procedure directly at 4000
above PP NDB according to the advice of POGÁNY INFO.
Other arrivals shall enter the holding procedure.

ILS approach from PP NDB:

Initial altitude: 4000. 185 KIAS max.

Leave PP NDB on QDR 169 and descend to 2500.

At D 8.3 PCS DME turn left to intercept PCS LOC and descend to 2200, then follows ILS.

ILS approach from PP NDB holding:

Initial altitude: 4000. 185 KIAS max.

At PP NDB turn left to 155° and descend to 2500.

At D 8.3 PCS DME turn left to intercept PCS LOC and follow basic procedure.

Holding procedure:

Holding fix: PP NDB.

Left hand holding pattern.

Inbound track: 335°

Outbound track: 155°

Rate of turn: 3°/sec. or 25° bank angle

(whichever requires lesser bank)

Outbound timing: 1 min.

Minimum holding altitude: 4000

Final approach descent (LOC only): 3.00°