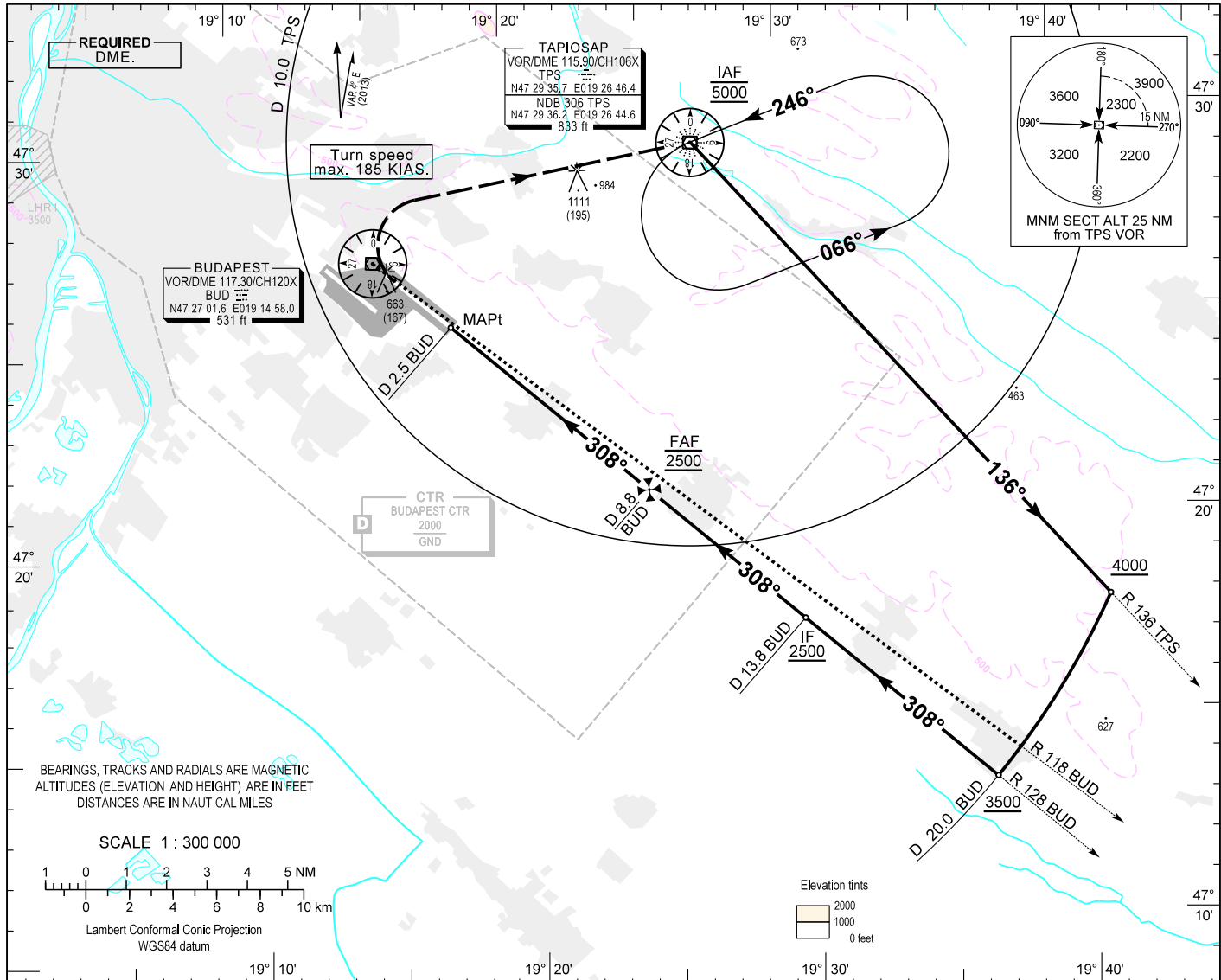


AIP HUNGARY

INSTRUMENT APPROACH CHART - ICAO  
AERODROME ELEV 496  
HEIGHTS RELATED TO THR RWY 31R - ELEV 416

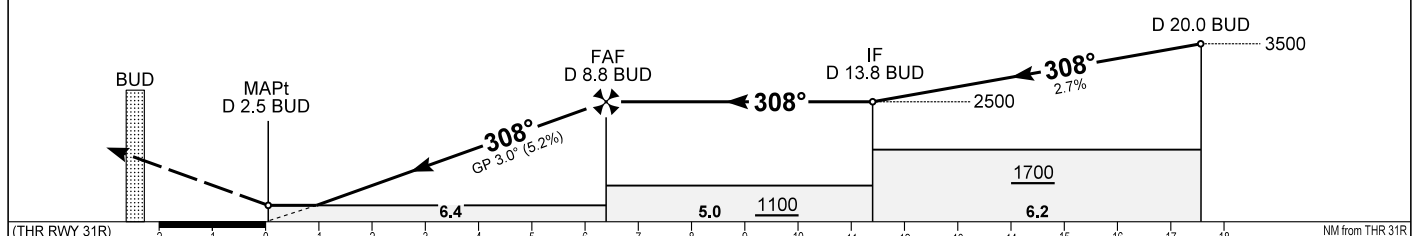
BUDAPEST APP 122.975 123.860  
BUDAPEST TOWER 118.100  
BUDAPEST INFORMATION (NORTH) 119.350  
BUDAPEST GROUND 121.910  
BUDAPEST DELIVERY 134.540  
ATIS 132.380 (117.300)  
119.350

BUDAPEST/LISZT FERENC  
VOR RWY 31R  
(ACFT CAT A, B, C, D)



**MISSED APPROACH**  
Climb to 3000 on R 128 BUD inbound BUD VOR.  
When passing 900 turn right to TPS VOR.  
Maximum turning speed 185 KIAS.  
At 3000 enter published holding pattern at TPS VOR/DME.

TRANSITION ALTITUDE  
10000



| CAT OF ACFT            |           | A          | B    | C          | D    | DME BUD                                      | NM | 8.0  | 7.0  | 6.0  | 5.0  | 4.0 |
|------------------------|-----------|------------|------|------------|------|--|----|------|------|------|------|-----|
| OCA (H)<br>STRAIGHT-IN | 2.5% macg | 1240 (824) |      | 1260 (844) |      | DIST THR / RWY 31R                           | NM | 5.5  | 4.5  | 3.5  | 2.5  | 1.5 |
|                        | 3.7% macg | 770 (354)  |      | 790 (374)  |      | ALTITUDE                                     | ft | 2220 | 1900 | 1580 | 1270 | 950 |
| CIRCLING               |           | 980        | 1190 | 1310       | 1510 | Timing not authorised for defining the MAPt. |    |      |      |      |      |     |

| GS                            | kt      | 80   | 100  | 120  | 140  | 160  | 180  |
|-------------------------------|---------|------|------|------|------|------|------|
| FAF - RWY 31R (6.4 NM)        | min:sec | 4:48 | 3:51 | 3:12 | 2:45 | 2:24 | 2:08 |
| Rate of descent (326.1 ft/NM) | ft/min  | 430  | 540  | 650  | 760  | 860  | 970  |

## AD 2 LHBP INSTRUMENT APPROACH CHART VOR RWY 31R

### VOR approach procedure:

Initial altitude 5000.  
Leave TPS VOR on R 136 TPS outbound and descend 4000.  
At D 20.0 BUD turn right and join CW D 20.0 BUD DME arc, descend 3500.  
After crossing R 118 BUD leading radial turn right and intercept R 128 BUD inbound (final track), descend 2500.  
When crossing D 8.8 BUD (FAF) descend to published minimum altitude.

### Holding procedure:

Holding fix: TPS VOR.  
Left hand holding pattern.  
Maximum speed: 230 KIAS  
Inbound track: 246°  
Outbound track: 066°  
Rate of turn: 3°/sec. or 25° bank angle  
(whichever requires lesser bank)  
Outbound timing: 1 min.  
Minimum holding altitude: 5000  
Maximum holding altitude: 3000 for Missed approach  
10000

Final approach descent: 3.0°