

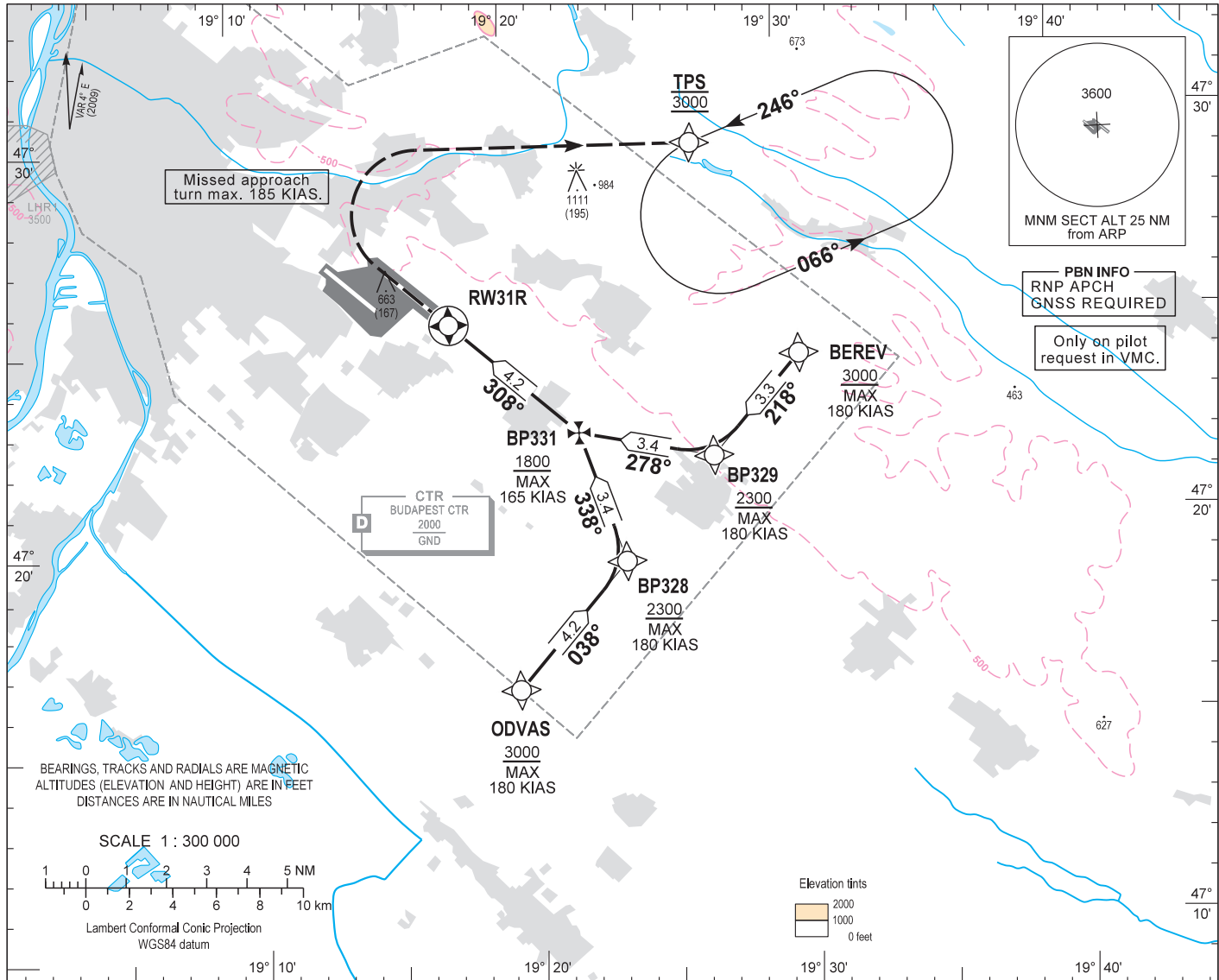
AIP HUNGARY

INSTRUMENT
APPROACH
CHART - ICAO

AERODROME ELEV 496
HEIGHTS RELATED TO
THR RWY 31R - ELEV 416

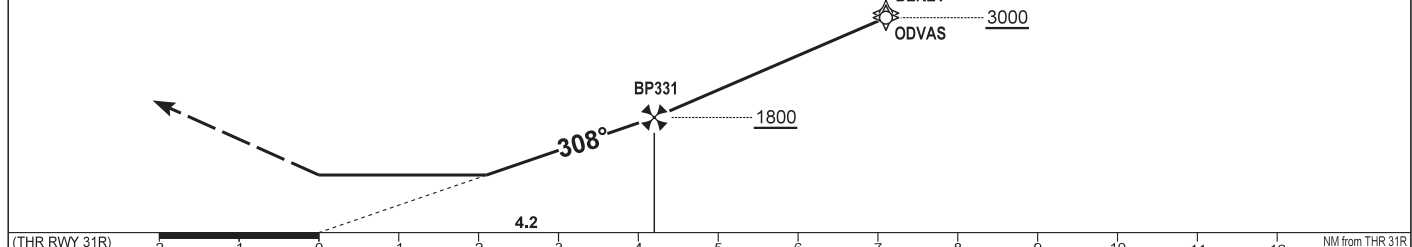
BUDAPEST APP	122.975	123.860	BUDAPEST GROUND	121.910
		119.510	BUDAPEST DELIVERY	134.540
BUDAPEST TOWER	118.100		ATIS	132.380 (117,300)
BUDAPEST INFORMATION (NORTH)				119.350

BUDAPEST/LISZT FERENC
RNAV_(GNSS) Y RWY 31R
(ACFT CAT A, B, C)



MISSED APPROACH
Climb to 3000 on runway heading.
When passing 900 turn right to TPS.
Maximum turning speed 185 KIAS.
At 3000 enter published holding pattern at TPS.

TRANSITION ALTITUDE 10000



CAT OF ACFT		A	B	C	DIST THR / RWY31R					
OCA (H)	LNAV	2.5% macg	1300 (884)		NM	6.0	5.0	4.0	3.0	
STRAIGHT-IN					ALTITUDE	ft	2380	2060	1740	1420

VISUAL APPROACH RWY 31R		GS						
VMC		kt						
CEILING - VISIBILITY		min:sec						
1500' AGL - 5 KM		ft/min						
		80	100	120	140	160	180	
BP331 - RWY31R (4.2 NM)		4:47	3:50	3:12	2:44	2:24	2:08	
Timing not authorised for defining the MAPt.								
Rate of descent (326.1 ft/NM)		430	540	650	760	860	970	

AD 2 LHBP INSTRUMENT APPROACH CHART RNAV_(GNSS) Y RWY 31R

via BEREV

PT	WP ID	Flx role	OverFly	Bearing	Len/Dur	Turn Direction	Len/Dur	IAS (kt)	NAV PERF
IF	BEREV	IAF					+3000	-180	RNP APCH
TF	BP329	IF		222.5T	3.3NM	R	+2300	-180	RNP APCH
TF	BP331	FAF	Y	282.5T	3.4NM	R	+1800	-165	RNP APCH
TF	RW31R	LTP/FTP	Y	312.4T	4.2NM		+466		RNP APCH
VA				312.4T			+900		RNP APCH
DF	TPS	TP				R	@3000	-185	RNP APCH
HM	TPS	MAHF		250.2T	1.00 min	L	@3000	-230	RNP APCH

via ODVAS

PT	WP ID	Flx role	OverFly	Bearing	Len/Dur	Turn Direction	Len/Dur	IAS (kt)	NAV PERF
IF	ODVAS	IAF					+3000	-180	RNP APCH
TF	BP328	IF		042.5T	4.2NM	L	+2300	-180	RNP APCH
TF	BP331	FAF	Y	342.5T	3.4NM	L	+1800	-165	RNP APCH
TF	RW31R	LTP/FTP	Y	312.4T	4.2NM		+466		RNP APCH
VA				312.4T			+900		RNP APCH
DF	TPS	TP				R	@3000	-185	RNP APCH
HM	TPS	MAHF		250.2T	1.00 min	L	@3000	-230	RNP APCH

WAYPOINT COORDINATES

WP ID	Latitude	Longitude
BEREV	N47 24 14.9	E019 30 21.2
ODVAS	N47 16 15.0	E019 19 34.7
BP328	N47 19 18.7	E019 23 41.6
BP329	N47 21 49.1	E019 27 04.2
BP331	N47 22 33.1	E019 22 11.2
RW31R	N47 25 22.62	E019 17 37.88
TPS	N47 29 35.7	E019 26 46.4