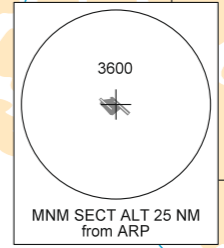
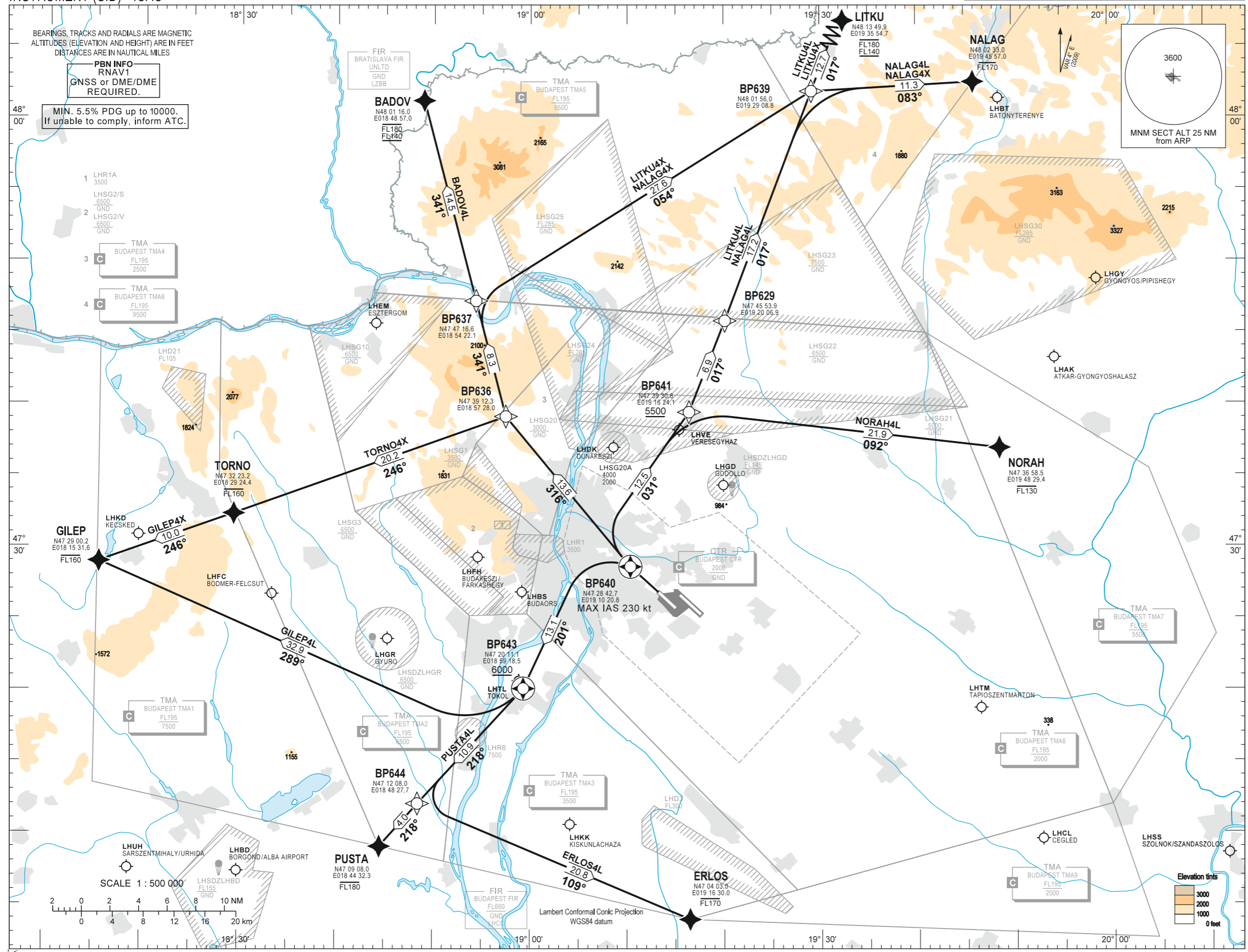


STANDARD DEPARTURE CHART -
INSTRUMENT (SID) - ICAO

TRANSITION ALTITUDE
10000

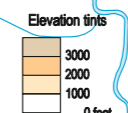
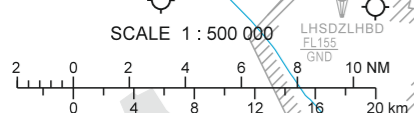
BUDAPEST APP	122.975 123.860	BUDAPEST GROUND	121.910
BUDAPEST TOWER	119.510	BUDAPEST DELIVERY	134.540
BUDAPEST INFORMATION (NORTH)	118.100	ATIS	132.380 (117.300)
			119.350

BUDAPEST/LISZT FERENC
RNAV RWY 31L
BADOV4L ERL0S4L GILEP4L GILEP4X LITKU4L LITKU4X
NALAG4L NALAG4X NORAH4L PUSTA4L TORNO4X



MIN. 5.5% PDG up to 10000.
If unable to comply, inform ATC.

- 1 LHR1A 3500
- LHSG2/S 6500 GND
- 2 LHSG2/V 6500 GND
- 3 TMA BUDAPEST TMA4 FL195 7500
- 4 TMA BUDAPEST TMA8 FL195 9500



AD 2 LHBP STANDARD DEPARTURE CHART INSTRUMENT RWY 31L

An aeroplane should not be diverted from its assigned route unless:
it is necessary for the safety of the aeroplane (e.g. for avoidance of severe weather or to resolve a traffic conflict).

CLIMBING:

Min. 5.5% PDG up to 10000. If unable to comply, inform ATC. After departure climb initially 7000. Further climb only by ATC.

CONTACT:

If pilot not otherwise instructed by Budapest TWR, all departing aircraft, irrespective of the assigned SID, when passing 1500, shall contact Budapest APP on 122.975.

R/T FAILURE:

If a departing controlled aircraft having acknowledged an initial (eg. 7000) or intermediate clearance, to climb to a level other than the one specified in the filed FPL for the en-route phase of the flight and no time or geographical limit was included in the clearance, should maintain for a period of seven minutes the level (eg. 7000) to which it was cleared and then should climb to the level included in the filed FPL unless the cruising level was definitely specified in the en-route clearance.

SID NAME	PROCEDURE	RESTRICTIONS
NORAH4L	To BP640 climb on course 308°. To BP641 on course 031°, at or above 5500. To NORAH, at or below FL130.	MAX 230 KT IAS at BP640.
NALAG4L	To BP640 climb on course 308°. To BP641 on course 031°, at or above 5500. To BP629, to BP639, to NALAG at or below FL170.	
NALAG4X	To BP640 climb on course 308°. Direct to BP636. To BP637, to BP639, to NALAG at or below FL170.	
LITKU4L	To BP640 climb on course 308°. To BP641 on course 031°, at or above 5500. To BP629, to BP639, to LITKU between FL140 and FL180.	
LITKU4X	To BP640 climb on course 308°. Direct to BP636. To BP637, to BP639, to LITKU between FL140 and FL180.	
BADOV4L	To BP640 climb on course 308°. Direct to BP636. To BADOV between FL140 and FL180.	
TORNO4X	To BP640 climb on course 308°. Direct to BP636. To TORNO at or below FL160.	
GILEP4L	To BP640 climb on course 308°. To BP643 on course 201°, at or above 6000. To GILEP at or below FL160.	
GILEP4X	To BP640 climb on course 308°. Direct to BP636. To GILEP at or below FL160.	
PUSTA4L	To BP640 climb on course 308°. To BP643 on course 201°, at or above 6000. To PUSTA at or below FL180.	
ERLOS4L	To BP640 climb on course 308°. To BP643 on course 201°, at or above 6000. To BP644, to ERLOS at or below FL170.	

Recommended navaid: BUD VOR.