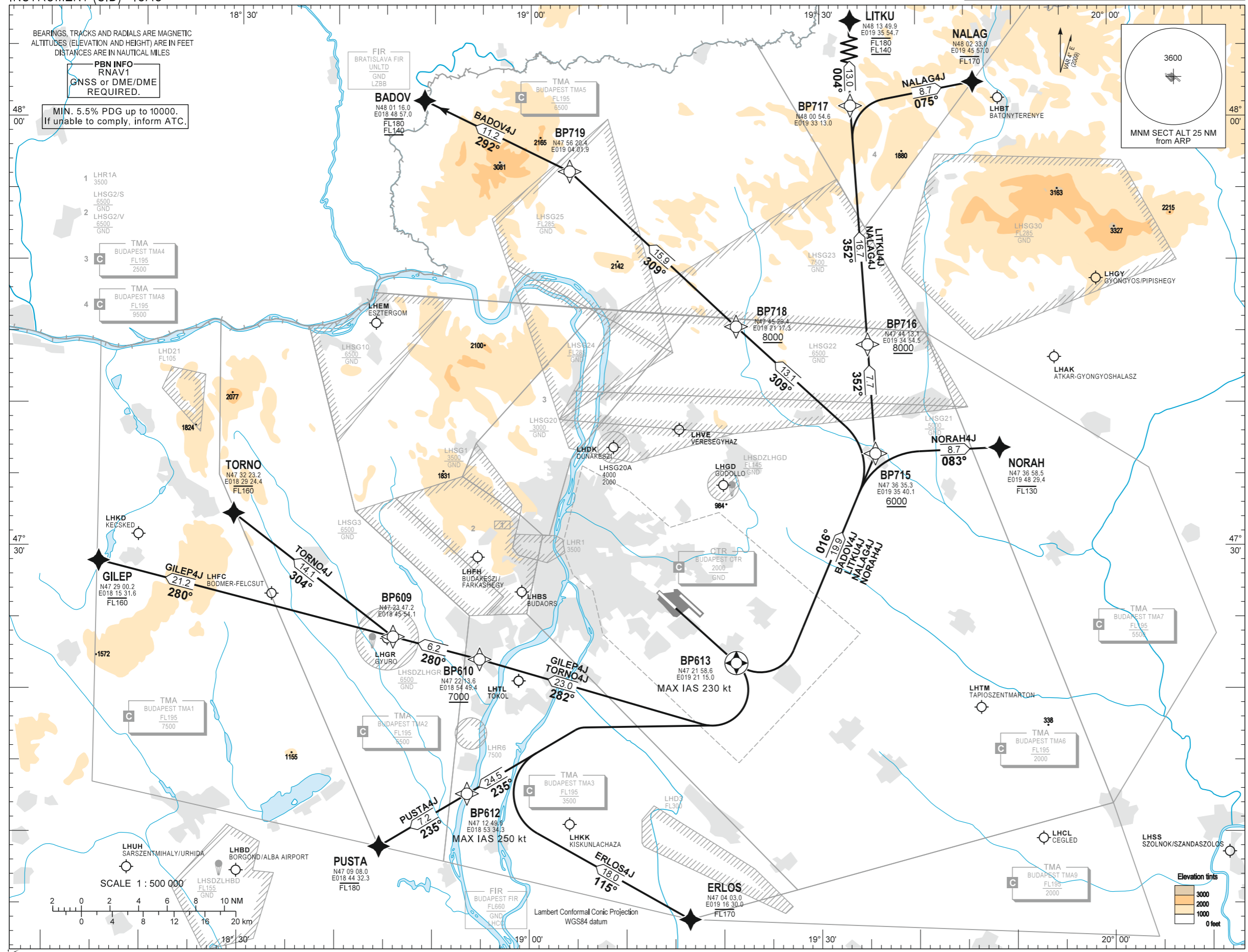


STANDARD DEPARTURE CHART -  
INSTRUMENT (SID) - ICAO

TRANSITION ALTITUDE  
10000

BUDAPEST APP	122.975 123.860	BUDAPEST GROUND	121.910
BUDAPEST TOWER	119.510	BUDAPEST DELIVERY	134.540
BUDAPEST INFORMATION (NORTH)	118.100	ATIS	132.380 (117.300)
			119.350

**BUDAPEST/LISZT FERENC**  
RNAVRWY 13R  
BADOV4J ERL0S4J GILEP4J LITKU4J  
NALAG4J NORAH4J PUST4J TORN04J



**AD 2 LHBP STANDARD DEPARTURE CHART INSTRUMENT RWY 13R**

An aeroplane should not be diverted from its assigned route unless:  
it is necessary for the safety of the aeroplane (e.g. for avoidance of severe weather or to resolve a traffic conflict).

**CLIMBING:**

Min. 5.5% PDG up to 10000. If unable to comply, inform ATC. After departure climb initially 7000. Further climb only by ATC.

**CONTACT:**

If pilot not otherwise instructed by Budapest TWR, all departing aircraft, irrespective of the assigned SID, when passing 1500, shall contact Budapest APP on 122.975.

**R/T FAILURE:**

If a departing controlled aircraft having acknowledged an initial (eg. 7000) or intermediate clearance, to climb to a level other than the one specified in the filed FPL for the en-route phase of the flight and no time or geographical limit was included in the clearance, should maintain for a period of seven minutes the level (eg. 7000) to which it was cleared and then should climb to the level included in the filed FPL unless the cruising level was definitely specified in the en-route clearance.

SID NAME	PROCEDURE	RESTRICTIONS
NORAH4J	To BP613 climb on course 128°. To BP715 on course 016°, at or above 6000. To NORAH, at or below FL130.	MAX 230 KT IAS at BP613. MAX 250 KT IAS at BP612.
NALAG4J	To BP613 climb on course 128°. To BP715 on course 016°, at or above 6000. To BP716, at or above 8000. To BP717, to NALAG at or below FL170.	
LITKU4J	To BP613 climb on course 128°. To BP715 on course 016°, at or above 6000. To BP716, at or above 8000. To BP717, to LITKU between FL140 and FL180.	
BADOV4J	To BP613 climb on course 128°. To BP715 on course 016°, at or above 6000. To BP718, at or above 8000. To BP719, to BADOV between FL140 and FL180.	
TORNO4J	To BP613 climb on course 128°. Direct to BP610, at or above 7000. To BP609, to TORNO at or below FL160.	
GILEP4J	To BP613 climb on course 128°. Direct to BP610, at or above 7000. To GILEP at or below FL160.	
PUSTA4J	To BP613 climb on course 128°. To BP612 on course 235°. To PUSTA at or below FL180.	
ERLOS4J	To BP613 climb on course 128°. To BP612 on course 235°. To ERLOS at or below FL170.	

Recommended navaid: BUD VOR.