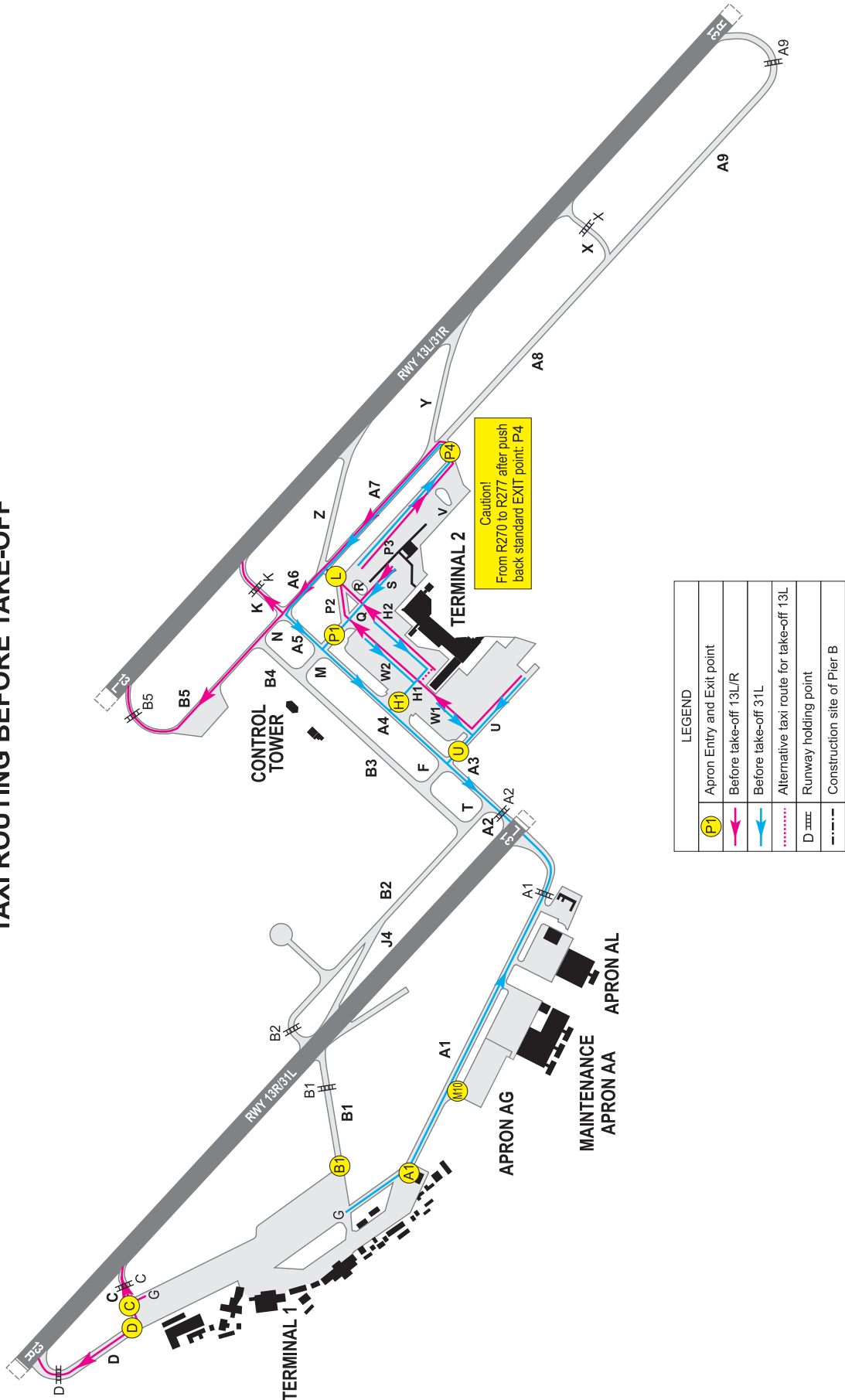


APPENDIX 2 TO AERODROME CHART - ICAO
TAXI PROCEDURES FOR DEPARTING AIRCRAFT
(PARALLEL RWY OPERATION)

BUDAPEST/LISZT FERENC

TAXI ROUTING BEFORE TAKE-OFF



**AD 2 LIST OF AVAILABLE TAXI CLEARANCES FOR DEPARTING AIRCRAFT
ISSUED BY ATC**

Departures on RWY	From stands/gates	EXIT POINTS	Taxi route on Apron(taxilane or TWY segments) to be followed	HOLDING POINTS	Taxi route on the maneuvering area (TWY segments) to be followed	Terminal	Remarks			
13L	31 - 34* - 35* - 36* - 36L	L	U-W1-W2-P2-L	K or B5 on request	L-A6-K or L-A6-N-B5	2	U after coordination; * Code D, E exit U only			
	42 - 43		H1/H2-R-L				H1 after coordination; * Code E exit H1 only			
	37 - 39* - 39L		W1-W2-P2-L				H1 or P1 after coordination			
	R220 -R223						P1 after coordination ** R212A push back only to H2			
	R210 - R212 - R212A** R224 - R227									
	44 - 45	S-R-L	L after coordination; * Code D, E exit P4 only							
	R270 - R277	P3-P4								
	R278 - R279*	P4 V-P4	P4-A7-A6-K or P4-A7-A6-N-B5							
13R	R101-R107 G150-172 R110-R117A*	C	G	C	C	1	* Code E, F exit B1 only			
	G130 - G141	D		D	D					
		M10/C	Apron taxilane/G	C	C		Follow the instructions			
		M10/D		D	D					
31L	31 - 36L	U	U	A2	U-A3-A2	2				
	R220 - R223		W1-U							
	37 - 39L	H1	H1		H1-A4-A3-A2		P1-A4-A3-A2	** R212A push back to H2 and P1 or L exit only by Follow Me		
	42 - 43		H2-H1							
	R210 - R212 - R212** R224 - R227		W2-H1							
	44 - 45	P1	S-Q-P1							
	R270 - R277	P4	P3-P4		P4-A7-A6-A5-A4-A3-A2		P4-A7-A6-A5-A4-A3-A2	P1 after coordination; * Code D, E exit P4 only		
	R278 - R279*		V-P4							
	R101-R108 G150-G172 R110-R117A	A1	G		A1		A1	A1	1	Code A, B, C only
		B1			B1		B1	B1		Code D, E, F exit B1 only
G130 - G141	M10	Apron taxilane	A1 or B1 on request	A1 or B1	APRON AG					