

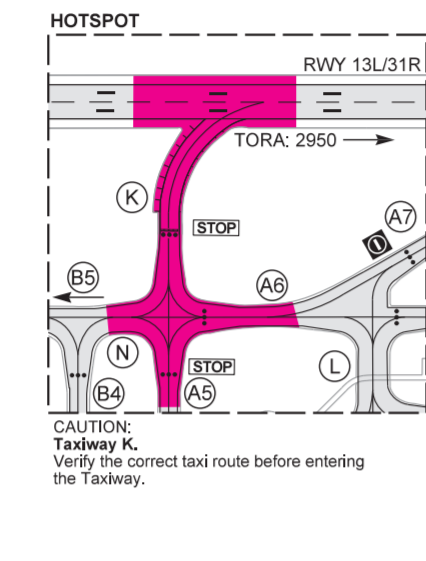
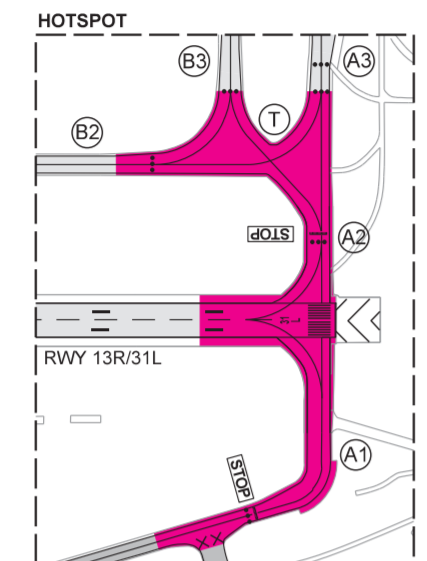
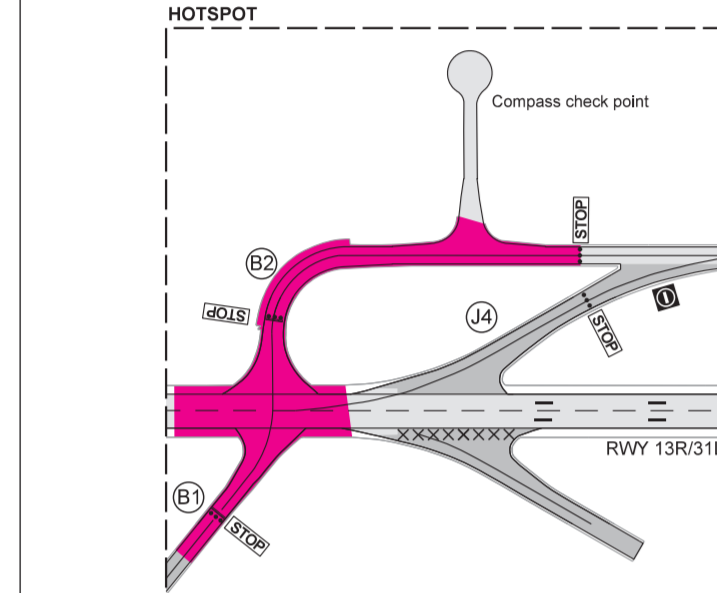
AERODROME CHART - ICAO

ARP
N47 26 22
E019 15 43
AERODROME ELEV 496

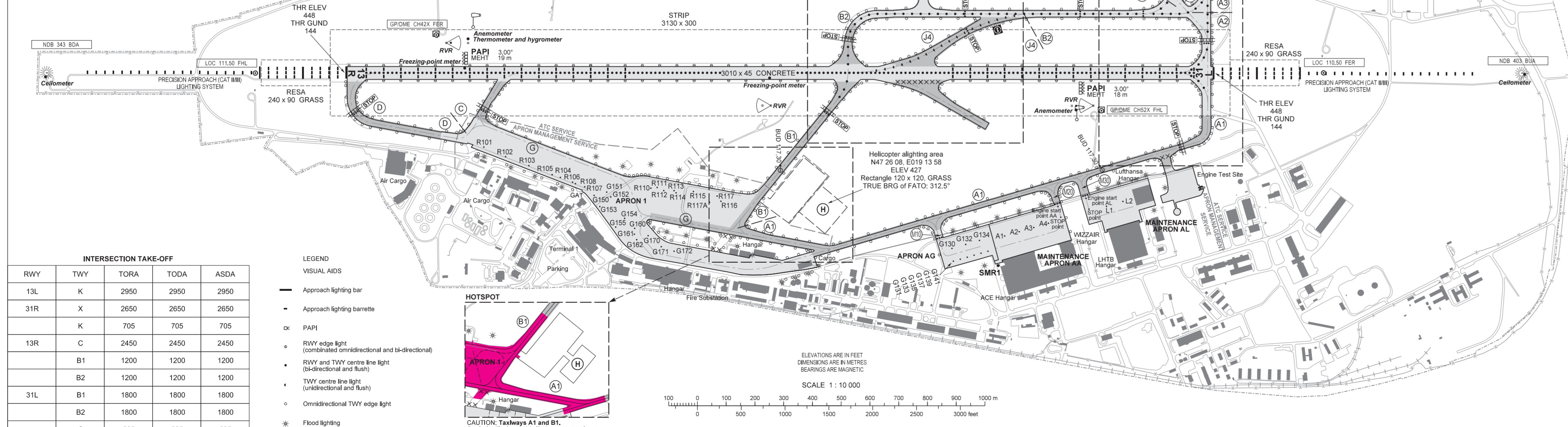
BUDAPEST APP 122 975
123 860
119 510
BUDAPEST TOWER
BUDAPEST GROUND
BUDAPEST DELIVERY
BUDAPEST INFORMATION (NORTH)
118 100
121 910
134 540
119 350
BUDAPEST APRON 1
BUDAPEST APRON 2
ATIS
ATIS (BUD VOR)
131 555
122 440
132 380
117 300

RWY	DIRECTION	THR	BEARING STRENGTH	TORA	TODA	ASDA	LDA
13R	128°	N47 26 55, E019 13 15	PCN 75R/A/X/T	3010	3010	3010	3010
31L	308°	N47 25 50, E019 15 01	PCN 75R/A/X/T	3010	3010	3010	3010
13L	128°	N47 26 44, E019 15 27	PCN 90R/A/X/T	3707	3707	3707	3707
31R	308°	N47 25 23, E019 17 38	PCN 90R/A/X/T	3707	3707	3707	3707

APRON 1, APRON AG	PCN 60R/A/X/T
APRON 2	PCN 90R/A/X/T
APRON AA, APRON AL	PCN 75R/A/X/T
Taxiways: A1, B1, C, D, J4	PCN 90R/A/X/T
Taxiways: A2-A9, B2-B5, F, K, L, M, N, T, X, Y, Z	PCN 90R/A/X/T
Taxiway width: 23 m, exception A1: 19 m.	
Remark: TWY A1 downgraded to code C ACFT (max. wingspan 36.00 m).	

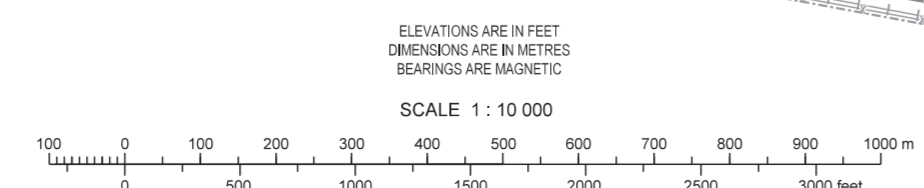
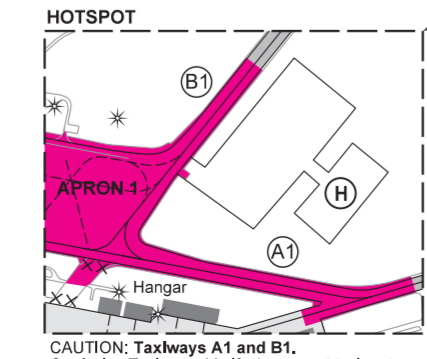


FOR BASIC CHART SYMBOLS SEE: GEN 2.3.
INS COORDINATES FOR AIRCRAFT STANDS SEE: PDC CHARTS.
TAXI PROCEDURES SEE: AD 2-LHBP-MISC CHARTS.
VISUAL DOCKING GUIDANCE SYSTEM:
SAFEDOCK T2-18 AT PARKING POSITIONS 31, 32, 33, 34, 34A, 34L, 34R, 35, 35L, 35R, 36, 36L, 36R, 37, 38, 39, 39L, 39R, 42, 43, 44, 45.
APRON ELEVATIONS: NOT AVAILABLE.
THE HIGHEST ELEVATIONS OF TDZ: NOT AVAILABLE.
GEOGRAPHICAL COORDINATES FOR TWY CENTRE LINES: NOT AVAILABLE.
OBSTACLES TO TAXIING: NOT AVAILABLE.

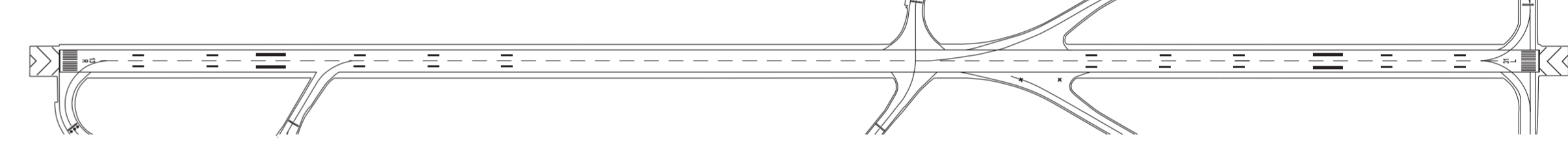


RWY	TWY	TORA	TODA	ASDA
13L	K	2950	2950	2950
31R	X	2650	2650	2650
	K	705	705	705
13R	C	2450	2450	2450
	B1	1200	1200	1200
	B2	1200	1200	1200
31L	B1	1800	1800	1800
	B2	1800	1800	1800
	C	505	505	505

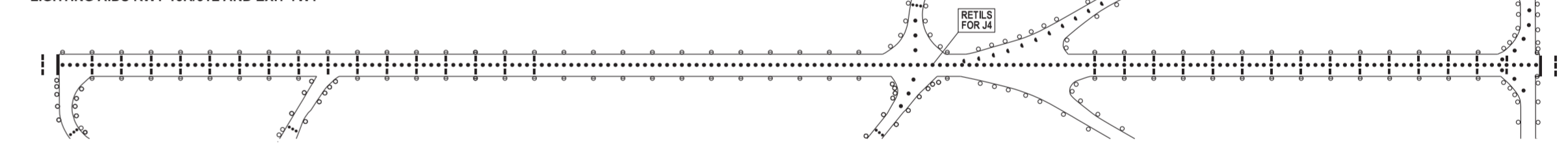
- LEGEND
- Approach lighting bar
 - Approach lighting barrette
 - ⊙ PAPI
 - RWY edge light (combined omnidirectional and bi-directional)
 - RWY and TWY centre line light (bi-directional and flush)
 - TWY centre line light (unidirectional and flush)
 - Omnidirectional TWY edge light
 - * Flood lighting



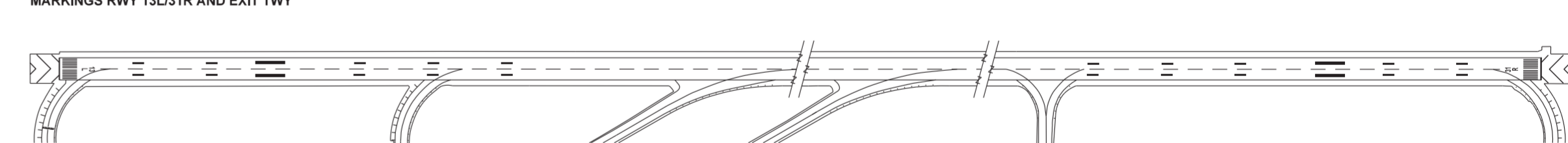
MARKINGS RWY 13R/31L AND EXIT TWY



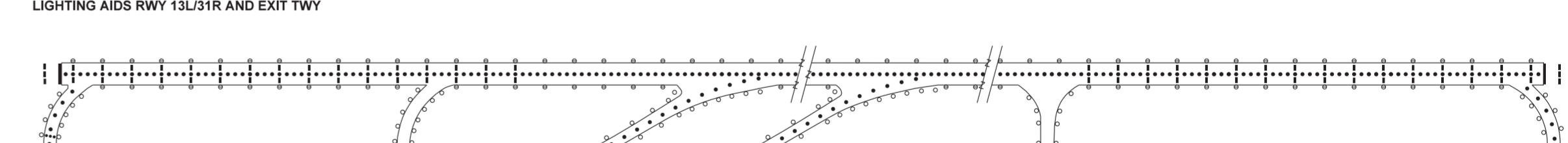
LIGHTING AIDS RWY 13R/31L AND EXIT TWY



MARKINGS RWY 13L/31R AND EXIT TWY



LIGHTING AIDS RWY 13L/31R AND EXIT TWY



LIGHTING

RWY 13L/31R and RWY 13R/31L
 Approach: Cat. II/III, High intensity white unidirectional (900 m), variable in 5 stages. From 900 m to 300 m flashing centre line.
 Thresholds: Low intensity green unidirectional, variable in 5 stages, with 2x10 m wing bar lights.
 Touchdown zone: High intensity white unidirectional, variable in 5 stages.
 PAPI: 3.00° (METS: see in chart).
 Runway edge: High intensity white unidirectional, variable in 5 stages. Last 600 m yellow. Low intensity white omnidirectional, variable in 5 stages. First and last 600 m yellow. Edge light spacing: 60 m.
 Runway centre line: High intensity unidirectional, variable in 5 stages. White to 900 m before runway end. Red/white from 900 m to 300 m before runway end. Red on the last 300 m of runway. Center line light spacing: 15 m.
 Runway ends: Low intensity red unidirectional.

TWY
 Taxiway edge: Low intensity omnidirectional blue.
 Taxiway centre line: Low intensity unidirectional green on taxiways Z, Y and J4. Low intensity bi-directional green on taxiways A2-A9, F, B2-B5, N, T, and U.
 STOP bars: Unidirectional red.
 Apron: Low intensity red edge lights and floodlights.
 Obstacle light: Low intensity red.

THIS PAGE IS INTENTIONALLY LEFT BLANK