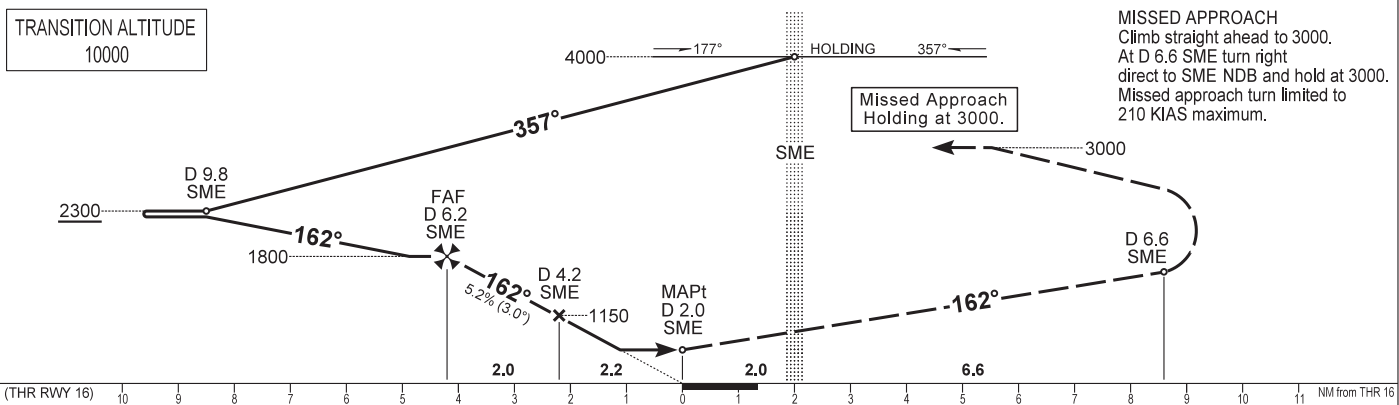
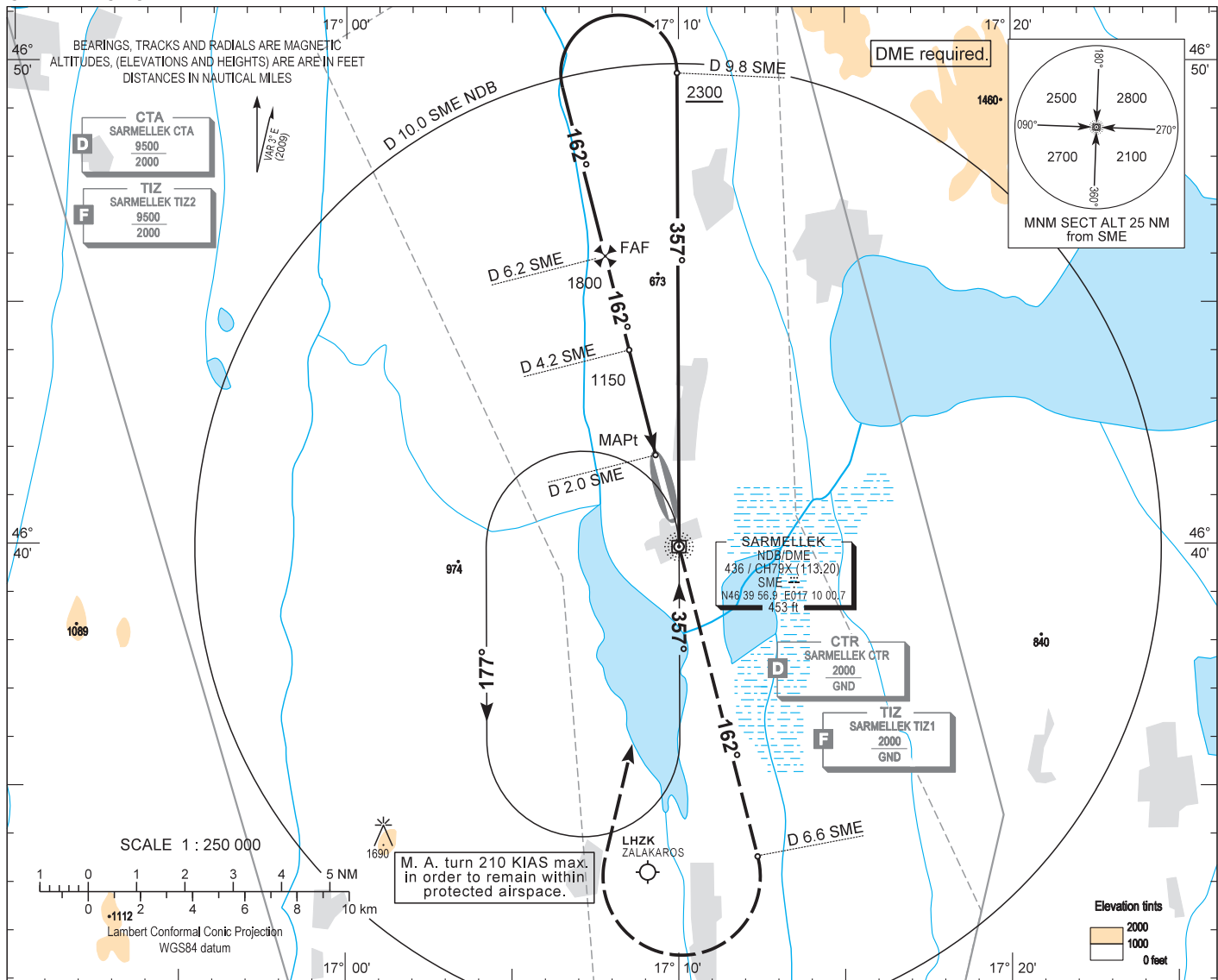


AIP HUNGARY

INSTRUMENT APPROACH CHART - ICAO  
AERODROME ELEV 408  
HEIGHTS RELATED TO THR RWY 16 - ELEV 408

BALATON INFO 134.575  
BUDAPEST INFORMATION (WEST) 125.500

HÉVÍZ/BALATON  
NDB, RWY 16  
(ACFT CAT A, B, C, D)



(THR RWY 16)	10	9	8	7	6	5	4	3	2	1	0	1	2	3	4	5	6	7	8	9	10	11	NM from THR 16
OCA (OCH)	A				B				C				D				GROUND SPEED						
STRAIGHT-IN APPROACH	770 (360)														kt	60	90	120	150	180			
CIRCLING APPROACH	ft AMSL	825	1030	1410	1410						FAF - MAPt 4.18 NM					MIN:sec	4:11	2:47	2:06	1:40	1:24		
	VIS. m	1900	2800	3700	4600																		

## AD 2 LHSM INSTRUMENT APPROACH CHART NDB RWY 16

### Approach from SME NDB:

Initial altitude: 4000.

Fly outbound on QDR 357 SME for 3 minutes or D 9.8 SME DME (whichever comes first) and descend to 2300.

Turn left for final (185 KIAS max.) to QDM 162 SME inbound, then descend to 1800.

At D 6.2 SME DME descend to 1150.

At D 4.2 SME DME descend to 770.

### Holding procedure:

Holding fix: SME NDB.

Left hand holding pattern.

Inbound track: 357°

Outbound track: 177°

Rate of turn: 3°/sec. or 25° bank angle

(whichever requires lesser bank)

Outbound timing: 1 min

Minimum holding altitude: 4000

3000 for Missed Approach

Final approach descent: 3.00°