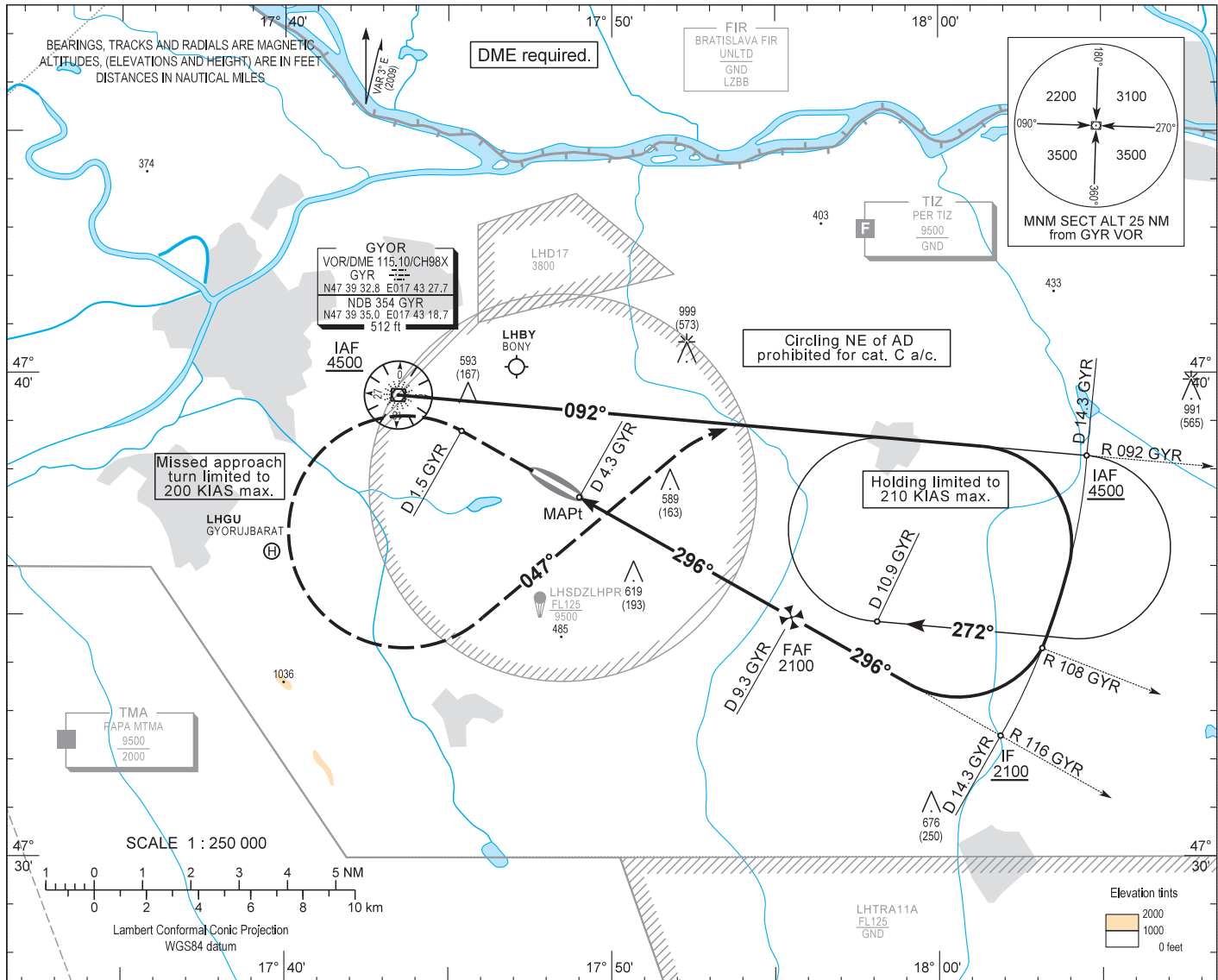


AIP HUNGARY

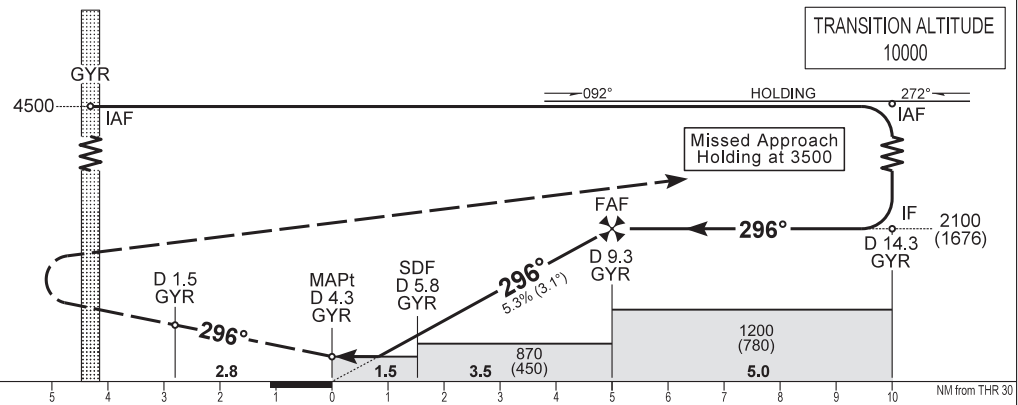
INSTRUMENT APPROACH CHART - ICAO  
AERODROME ELEV 426  
HEIGHTS RELATED TO THR RWY 30 - ELEV 426

PÉR INFO 129.900  
BUDAPEST INFORMATION (WEST) 125.500

GYŐR/PÉR  
VOR RWY 30  
(ACFT CAT A, B, C)



**MISSED APPROACH**  
Continuous climb to 3500.  
Straight ahead, then at D 1.5 GYR turn left (200 KIAS max.) to track 047° to intercept R 092 GYR outbound and hold.



(THR RWY 30)		10	9	8	7	6	5	4	3	2	1	0	1	2	3	4	5	6	7	8	9	10	NM from THR 30
OCA (H)		A			B			C															
STRAIGHT-IN APPROACH		VOR		790 (370)																			
CIRCLING APPROACH		ft AMSL		890 (470)	930 (510)	1140 (720)	SW of AD only																
		VIS. m		1900	2800	3700																	

CDA with GYR DME	NM	9.0	8.0	7.0	6.0
ALT	ft	2010	1680	1360	1030
(HGT)	ft	(1580)	(1260)	(940)	(610)

Timing not authorized to define the MAPt.

GROUND SPEED	kt	70	100	130	160
FAF - MAPt 5.0 NM	MIN:sec	4:17	3:00	2:18	1:53
VSP	ft/min	380	540	710	870

**AD 2 LHPR INSTRUMENT APPROACH CHART VOR RWY 30**

FIX	LATITUDE	LONGITUDE	FIX FORMATION
<b>IAF</b>	N47 39 32.8	E017 43 27.7	GYR VOR
<b>IAF</b>	N47 38 17.1	E018 04 32.0	R 092 GYR VOR / D 14.3 GYR DME
<b>IF</b>	N47 32 30.2	E018 01 51.4	R 116 GYR VOR / D 14.3 GYR DME
<b>FAF</b>	N47 34 58.2	E017 55 26.1	R 116 GYR VOR / D 9.3 GYR DME
<b>SDF</b>	N47 36 41.9	E017 50 55.8	R 116 GYR VOR / D 5.8 GYR DME
<b>MAPt</b>	N47 37 25.9	E017 49 00.0	R 116 GYR VOR / D 4.3 GYR DME
<b>MA TP</b>	N47 38 48.4	E017 45 23.7	R 116 GYR VOR / D 1.5 GYR DME

**Approach from GYR VOR:**

Initial alt: 4500.

Leave GYR VOR on R 092. Join D 14.3 GYR DME arc CW.

Descend to altitude 2100.

After passing R 108 GYR VOR leading radial turn right and intercept R 116 GYR VOR inbound for final RWY 30.

At D 9.3 GYR VOR descend 870.

After passing step down fix at D 5.8 GYR VOR descend 790.

**Approach holding procedure:**

Holding fix: GYR VOR R 092 / D 14.3.

Maximum speed: 210 KIAS

Inbound track: 092°

Outbound track: 272°

Turns: Right

Outbound timing: 1 min.

Minimum holding altitude: 4500 (3500 for Missed Approach)

MOCA: 2000

Entry: Sector 1 (parallel) and Sector 2 (offset) entries prohibited

Final approach descent: 3.06°