

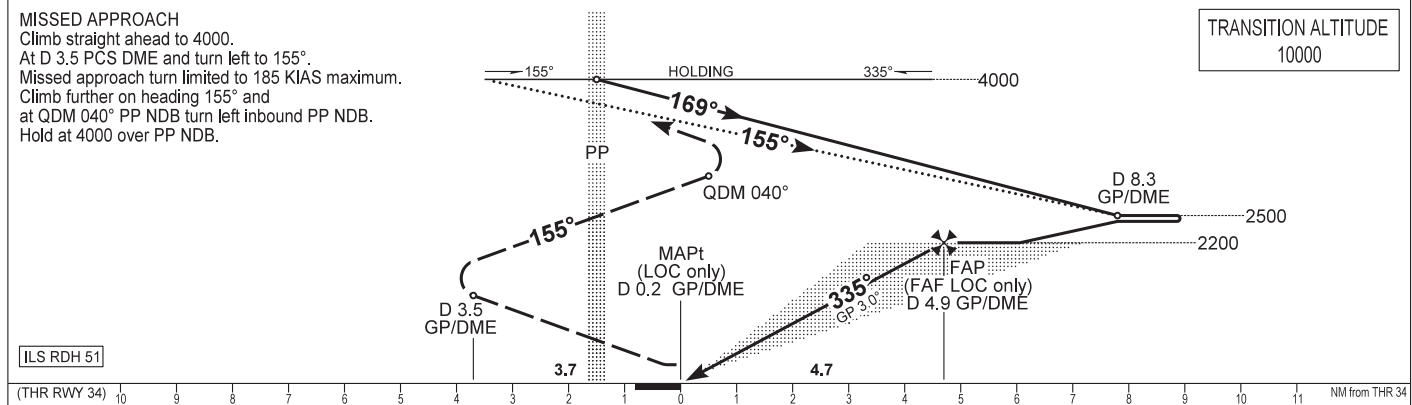
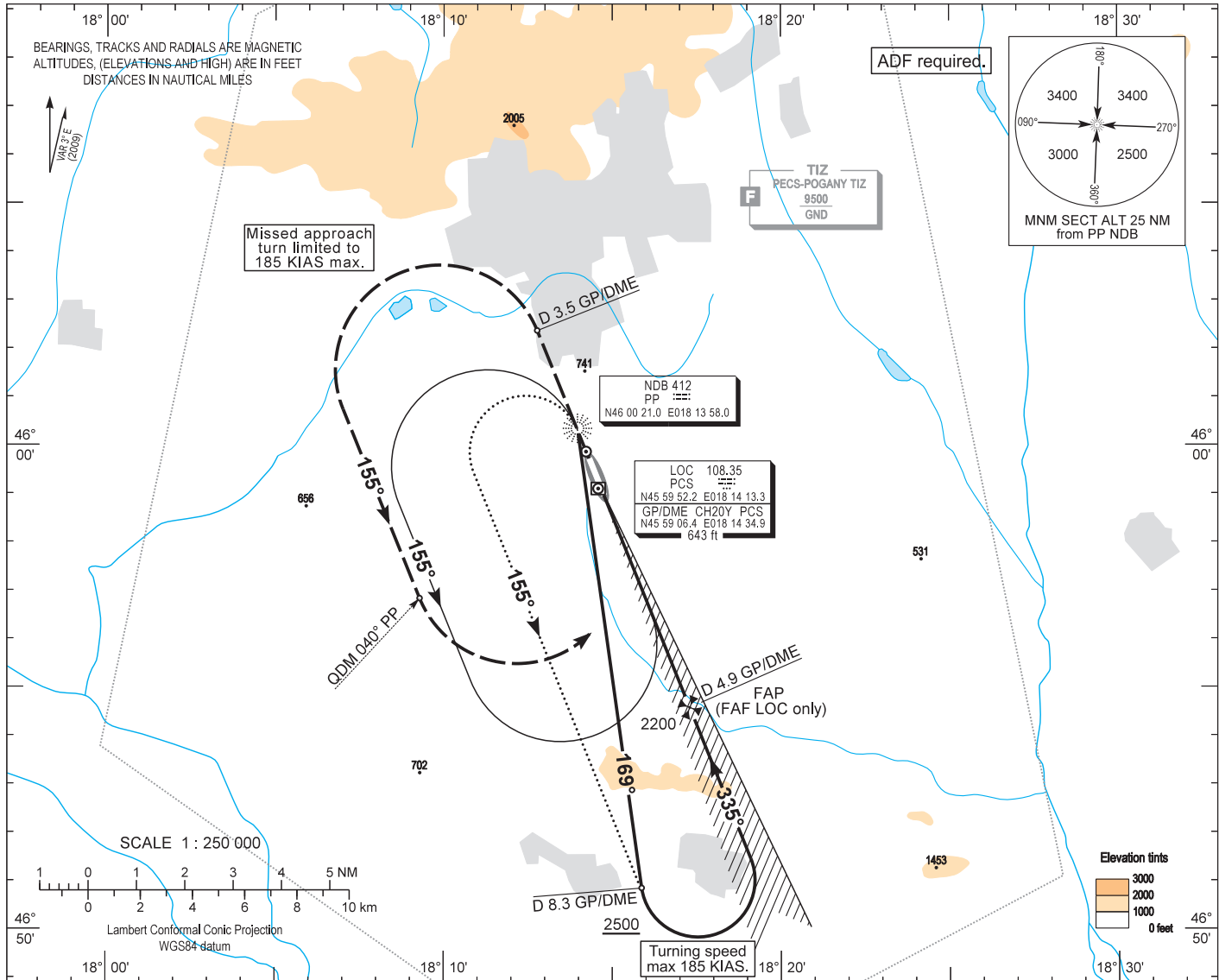
AIP HUNGARY

INSTRUMENT APPROACH CHART - ICAO

AERODROME ELEV 651
HEIGHTS RELATED TO THR RWY 34 - ELEV 640

POGÁNY INFO 126.905
BUDAPEST INFORMATION (WEST) 125.500

PÉCS/POGÁNY
ILS or LOC RWY 34
(ACFT CAT A, B, C, D)



OCA (OCH)		A	B	C	D	GROUND SPEED							
STRAIGHT-IN APPROACH	Cat. I	Press. ALT	776 (136)	784 (144)	794 (154)	801 (161)	kt	60	90	120	150	180	
	LOC		900 (260)				FAF - MAPt 4.69 NM	MIN:sec	4:42	3:07	2:21	1:53	1:34
CIRCLING APPROACH		ft AMSL	1220	1220	1440	1730	Rate of descent (5.2%)	ft / MIN	320	480	635	795	955
		VIS. m	1900	2800	3700	4600							

AD 2 LHPP INSTRUMENT APPROACH CHART ILS OR LOC RWY 34

Arrivals on 139° - 199° may enter the base turn procedure directly at 4000
above PP NDB according to the advice of POGÁNY INFO.
Other arrivals shall enter the holding procedure.

ILS approach from PP NDB:

Initial altitude: 4000. 185 KIAS max.

Leave PP NDB on QDR 169 and descend to 2500.

At D 8.3 PCS DME turn left to intercept PCS LOC and descend to 2200, then follows ILS.

ILS approach from PP NDB holding:

Initial altitude: 4000. 185 KIAS max.

At PP NDB turn left to 155° and descend to 2500.

At D 8.3 PCS DME turn left to intercept PCS LOC and follow basic procedure.

Holding procedure:

Holding fix: PP NDB.

Left hand holding pattern.

Inbound track: 335°

Outbound track: 155°

Rate of turn: 3°/sec. or 25° bank angle

(whichever requires lesser bank)

Outbound timing: 1 min.

Minimum holding altitude: 4000

Final approach descent (LOC only): 3.00°