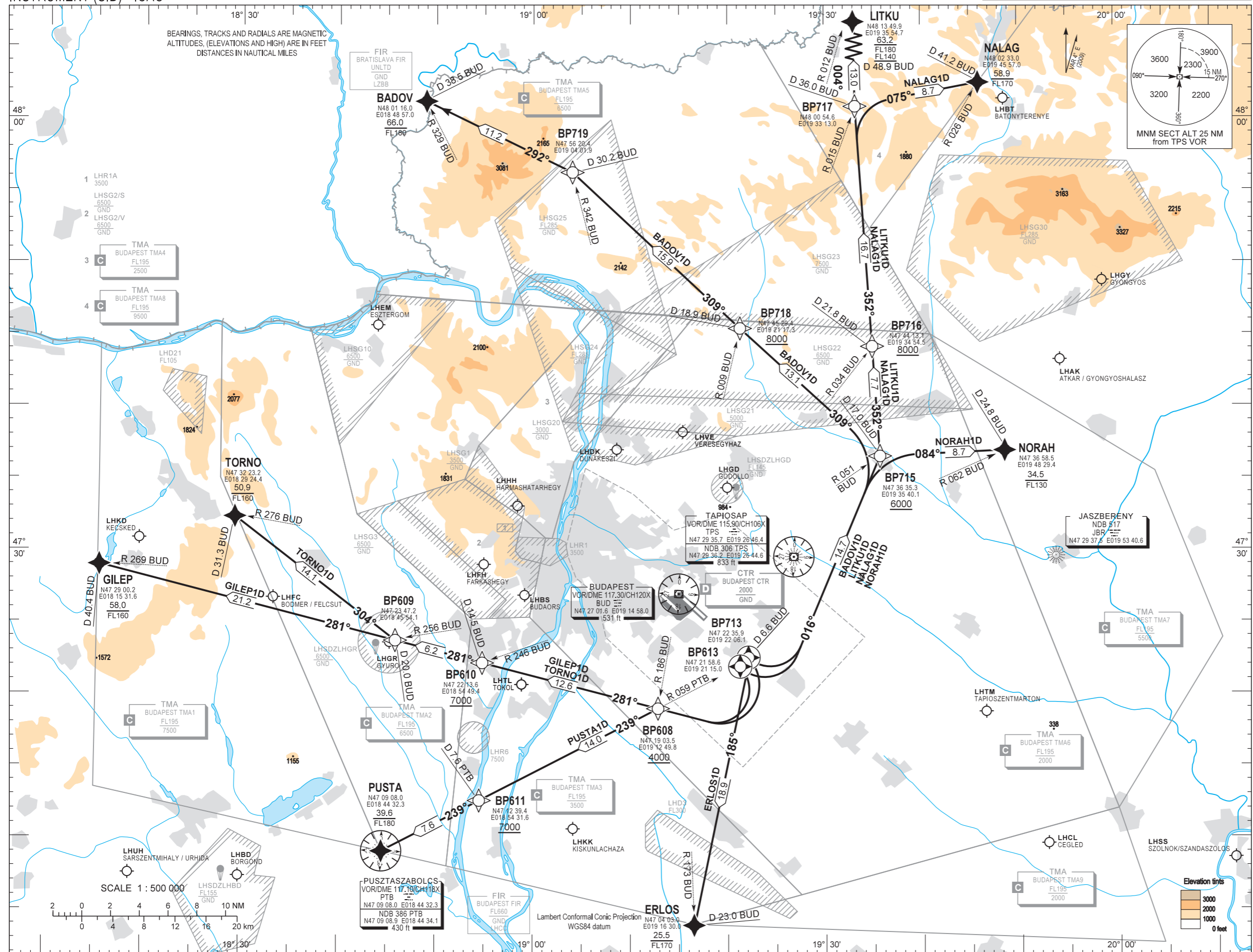


STANDARD DEPARTURE CHART -
INSTRUMENT (SID) - ICAO

TRANSITION ALTITUDE
10000

ATIS	132.375 (117.300)	BUDAPEST TOWER	118.100
BUDAPEST APP	129.700 122.975 119.500	BUDAPEST GROUND	121.900
		BUDAPEST DELIVERY	134.550

BUDAPEST/LISZT FERENC
RWY 13L / 13R



- BADOV1D (66.0) BP613 (from RWY 13R) or BP713 (from RWY 13L) - BP715 (6000 +) - BP718 (8000 +) - BP719 - BADOV (FL180 -)
- LITKU 1D (63.2) BP613 (from RWY 13R) or BP713 (from RWY 13L) - BP715 (6000 +) - BP716 (8000 +) - BP717 - LITKU (FL140-FL180)
- NALAG1D (58.9) BP613 (from RWY 13R) or BP713 (from RWY 13L) - BP715 (6000 +) - BP716 (8000 +) - BP717 - NALAG (FL170 -)
- NORAH1D (34.5) BP613 (from RWY 13R) or BP713 (from RWY 13L) - BP715 (6000 +) - NORAH (FL130 -)
- ERLOS1D (25.5) BP613 (from RWY 13R) or BP713 (from RWY 13L) - ERLOS (FL170 -)
- PUSTA1D (39.6) BP613 (from RWY 13R) or BP713 (from RWY 13L) - BP608 (4000 +) - BP611 (7000 +) - PUSTA (FL180 -)
- GILEP1D (58.0) BP613 (from RWY 13R) or BP713 (from RWY 13L) - BP608 (4000 +) - BP610 (7000 +) - GILEP (FL160 -)
- TORNO1D (50.9) BP613 (from RWY 13R) or BP713 (from RWY 13L) - BP608 (4000 +) - BP610 (7000 +) - BP609 - TORNO (FL160 -)

FOR DESCRIPTION
OF CONVENTIONAL
PROCEDURE SEE
REVERSE SIDE

AD 2 LHBP STANDARD DEPARTURE CHART INSTRUMENT RWY 13

SID NAME	PROCEDURE	CLIMBING	CONTACT	R/T FAILURE
BADOV1D (66.0)	Continue RWY heading to D 6.6 BUD DME then turn left to track 016. Cross D 17.0 BUD DME (R 051 BUD VOR) at 6000 or above and turn left to track 309. Cross R 009 BUD VOR (D 18.9 BUD DME) at 8000 or above. At D 30.2 BUD DME (R 342 BUD VOR) turn left to track 292 and proceed to BADOV (D 38,5 BUD DME; R 329 BUD VOR). Cross BADOV at FL180 or below.	After departure climb initially 7000. Further climb only by ATC.	If pilot not otherwise instructed by Budapest TWR, all departing aircraft, irrespective of the assigned SID, when passing 1500, shall contact Budapest APP on 129.700.	If a departing controlled aircraft having acknowledged an initial (eg. 7000) or intermediate clearance, to climb to a level other than the one specified in the filed FPL for the en-route phase of the flight and no time or geographical limit was included in the clearance, should maintain for a period of seven minutes the level (eg. 7000) to which it was cleared and then should climb to the level included in the filed FPL unless the cruising level was definitely specified in the en-route clearance.
LITKU1D (63.2)	Continue RWY heading to D 6.6 BUD DME then turn left to track 016. Cross D 17.0 BUD DME (R 051 BUD VOR) at 6000 or above and turn left to track 352. Cross R 034 BUD VOR (D 21.8 BUD DME) at 8000 or above. At D 36.0 BUD DME (R 015 BUD VOR) turn right to track 004 and proceed to LITKU. Cross LITKU (D 48.9 BUD DME; R 012 BUD VOR) block level FL140 – FL180.			
NALAG1D (58.9)	Continue RWY heading to D 6.6 BUD DME then turn left to track 016. Cross D 17.0 BUD DME (R 051 BUD VOR) at 6000 or above and turn left to track 352. Cross R 034 BUD VOR (D 21.8 BUD DME) at 8000 or above. At D 36.0 BUD DME (R 015 BUD VOR) turn right to track 075 and proceed to NALAG (D 41.2 BUD DME; R 026 BUD VOR). Cross NALAG at FL170 or below.			
NORAH1D (34.5)	Continue RWY heading to D 6.6 BUD DME then turn left to track 016. Cross D 17.0 BUD DME (R 051 BUD VOR) at 6000 or above and turn right to track 084 proceed to NORAH (D 24.8 BUD DME; R 062 BUD VOR). Cross NORAH at FL130 or below.			
ERLOS1D (25.5)	Continue RWY heading to D 6.6 BUD DME then turn right to track 185 and proceed to ERLOS (D 23.0 BUD DME; R 173 BUD VOR). Cross ERLOS at FL170 or below.			
PUSTA1D (39.6)	Continue RWY heading to D 6.6 BUD DME then turn right to track 281. Cross R 186 BUD VOR at 4000 or above. Turn left to track 239 and proceed to PUSTA (follow R 059 inbound to PTB VOR). Cross D 7.6 PTB DME at 7000 or above and PUSTA at FL180 or below.			
GILEP1D (58.0)	Continue RWY heading to D 6.6 BUD DME then turn right to track 281. Cross R 186 BUD VOR at 4000 or above. Cross D 14.5 BUD DME (R 246 BUD VOR) at 7000 or above. Cross GILEP (D 40.4 BUD DME; R 269 BUD VOR) at FL160 or below.			
TORNO1D (50.9)	Continue RWY heading to D 6.6 BUD DME then turn right to track 281. Cross R 186 BUD VOR at 4000 or above. Cross D 14.5 BUD DME (R 246 BUD VOR) at 7000 or above. At D 20.0 BUD DME (R 256 BUD VOR) turn right to track 304 and proceed to TORNO. Cross TORNO (D 31.3 BUD DME; R 276 BUD VOR) at FL160 or below.			