

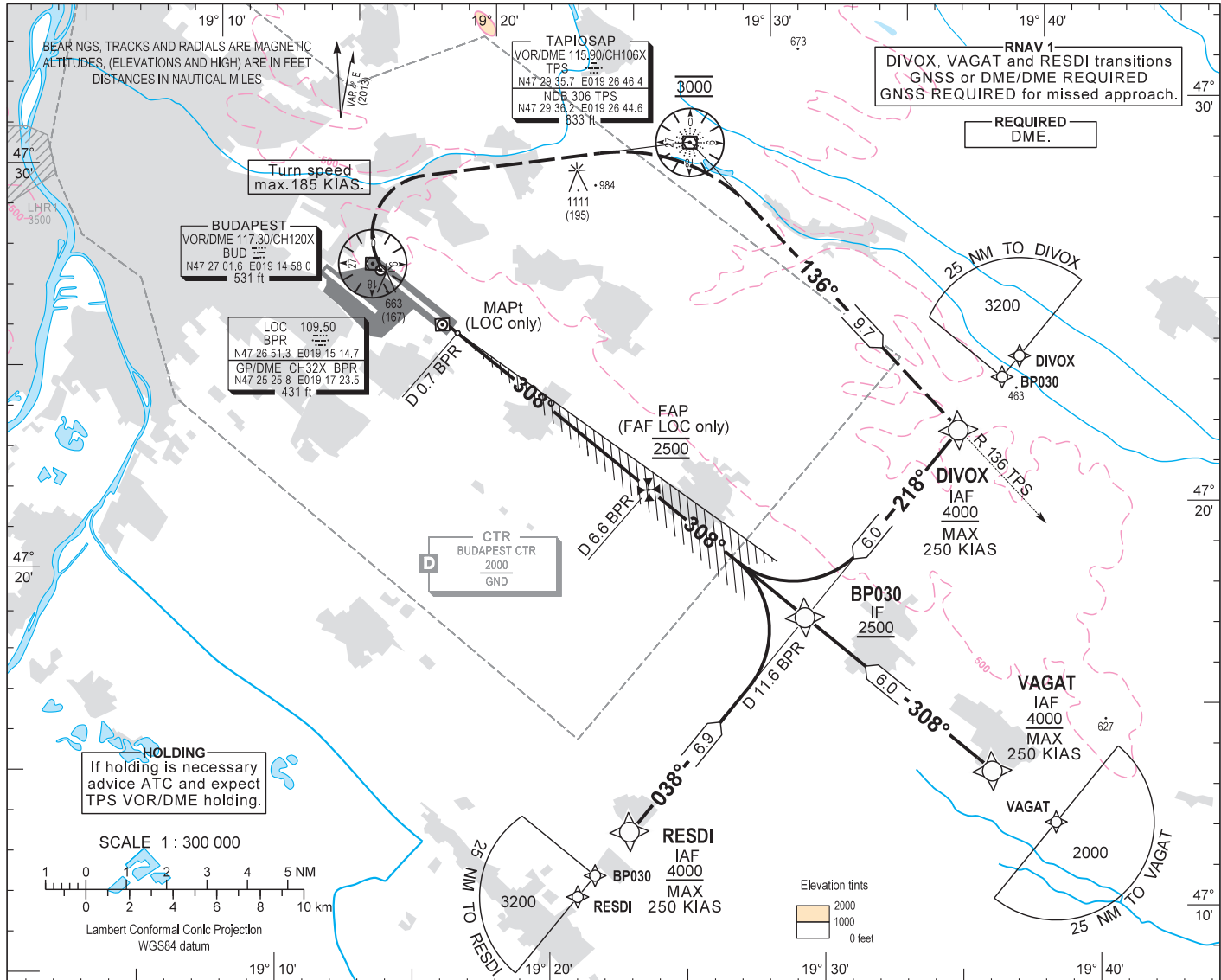
AIP HUNGARY

INSTRUMENT APPROACH CHART - ICAO

AERODROME ELEV 496  
HEIGHTS RELATED TO THR RWY 31R - ELEV 416

BUDAPEST APPROACH 129.700 ATIS 132.375 (117.300)  
122.975 BUDAPEST TOWER 118.100  
119.500 BUDAPEST GROUND 121.900

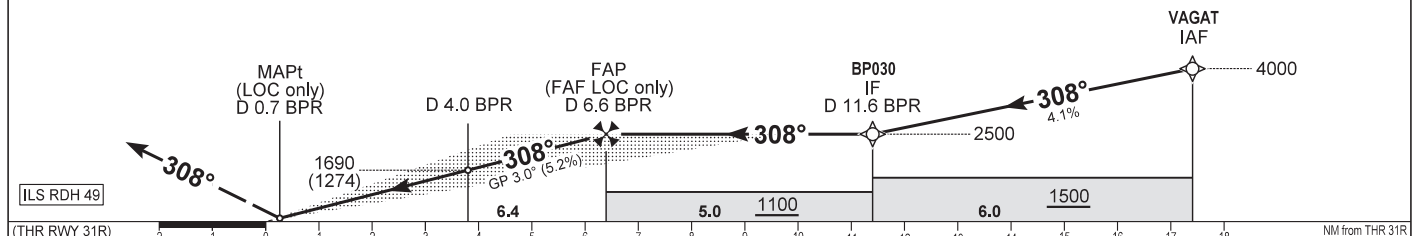
BUDAPEST/LISZT FERENC  
ILS OR LOC RWY 31R  
(ACFT CAT A, B, C, D)



**MISSED APPROACH (RNAV)**  
Climb to 3000 on RWY track 308°. When passing 900 turn right to TPS.  
Maximum turning speed 185 KIAS. At TPS (fly-by) turn right to track 136° inbound DIVOX.

**MISSED APPROACH (CONVENTIONAL)**  
Climb to 3000 on R 128 BUD inbound BUD VOR. When passing 900 turn right to TPS VOR.  
Maximum turning speed 185 KIAS. Reach TPS VOR at 3000 and turn right to intercept R 136 TPS inbound DIVOX.

**TRANSITION ALTITUDE**  
10000



CAT OF ACFT		A	B	C	D	DME BPR								
OCA (H) STRAIGHT-IN	CAT I	2.5% macg	1169 (753)	1179 (763)	1189 (773)	1199 (783)	NM	6.0	5.0	4.0	3.0	2.0		
		3.6% macg	596 (180)	609 (193)	617 (201)	627 (211)	NM	5.8	4.8	3.8	2.8	1.8		
	CAT II	2.5% macg	1080 (664)	1097 (681)	1110 (694)	1123 (707)	Timing not authorised for defining the MAPt.							
		3.6% macg	514 (98)	532 (116)	544 (128)	558 (142)								
	LOC	2.5% macg	1430 (1014)	1450 (1034)	1480 (1064)	1490 (1074)	GS	kt	80	100	120	140	160	180
		3.6% macg	760 (344)				FAP/FAF - THR 31R (6.4 NM)	min:sec	4:48	3:51	3:12	2:45	2:24	2:08
CIRCLING		980	1190	1310	1510	Rate of descent (326.1 ft/NM)	ft/min	430	540	650	760	860	970	

NOTE: CAT IIIB APPROVED

**AD 2 LHBP INSTRUMENT APPROACH CHART ILS OR LOC RWY 31R**

SEQ	P&T	Name	Latitude	Longitude	FlyOver	Bearing/ (Len Dur)	Turn Direction	Altitude (FT)	IAS (KT)	VPA/RDH (FT)	RNP (NM)
010	IF	DIVOX(IAF)	N47 22 06.5	E019 35 57.5	N	...	...	+4000	-250	...	...
020	TF	BP030(IF)	N47 17 41.5	E019 29 59.5	N	222 T/6.00 NM	...	+2500	...	-2.4°	...
010	IF	RESDI(IAF)	N47 12 38.0	E019 23 11.1	N	...	...	+4000	-250	...	...
020	TF	BP030(IF)	N47 17 41.5	E019 29 59.5	N	042 T/6.86 NM	...	+2500	...	-2.1°	...
010	IF	VAGAT(IAF)	N47 13 38.1	E019 36 28.7	N	...	...	+4000	-250	...	...
020	TF	BP030(IF)	N47 17 41.5	E019 29 59.5	N	312 T/6.00 NM	...	+2500	...	-2.4°	...
010	IF	BP030(IF)	N47 17 41.5	E019 29 59.5	N	...	...	+2500	...	...	...
020	CF	BP029(FAP)	N47 21 04.1	E019 24 34.4	Y	312 T/5.00 NM	...	@2500	...	-0.0°	...
030	CF	RW31R(LTP/FTP)	N47 25 22.6	E019 17 37.9	Y	312 T/6.39 NM	...	+465	...	-3.0°/15	...
010	IF	MAPt (LOC only)	N47 25 00.8	E019 18 13.1	N	...	...	+770	...	...	...
020	CA	...	...	...	N	312 T/1.76 NM	...	+900	...	2.1°	...
030	DF	TPS	N47 29 35.7	E019 26 46.4	N	...	R	@3000	-185	2.0°	...
040	TF	DIVOX	N47 22 06.5	E019 35 57.5	N	140 T/9.75 NM	R	@3000	...	0.0°	...

Final approach descent: 3.0°  
LOC only descent: : 2.97°