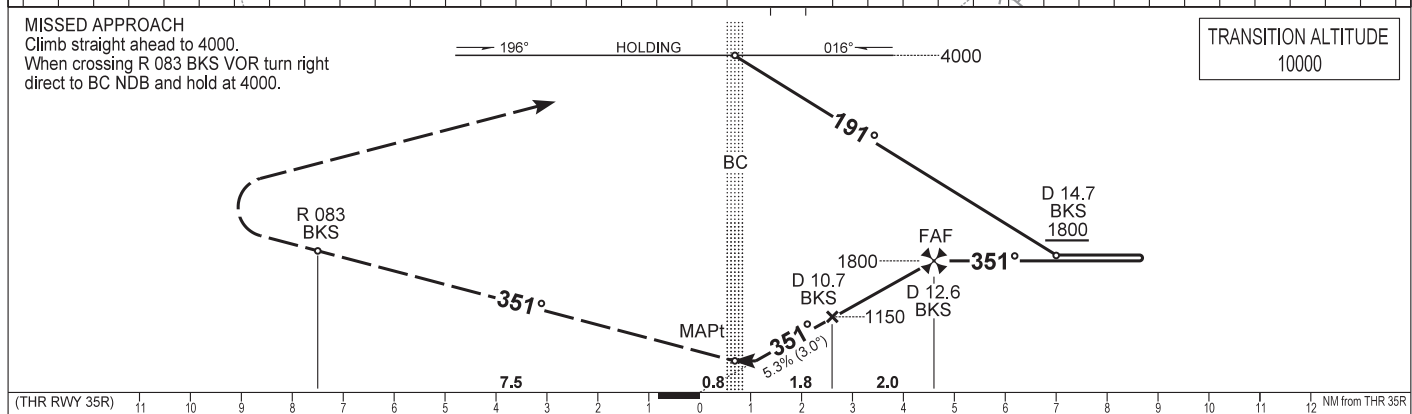
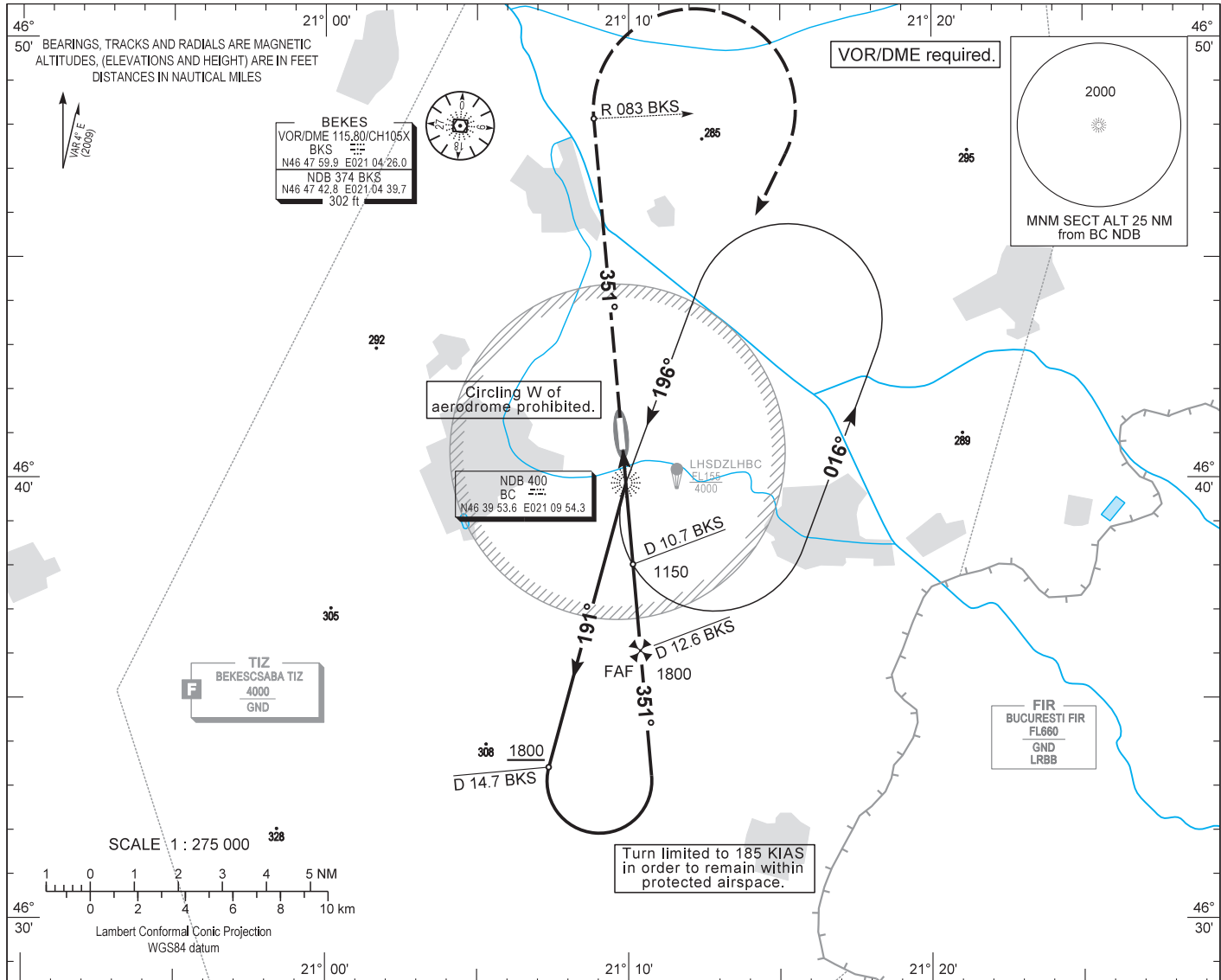


AIP HUNGARY

INSTRUMENT APPROACH CHART - ICAO
AERODROME ELEV 286
HEIGHTS RELATED TO THR RWY 35R - ELEV 286

BÉKÉSCSABA
NDB RWY 35R
(ACFT CAT A, B, C, D)



| | | | | | | | | | | | | | | | | | | | | | | | | | | | |
|-------------------------------------|-----------|------|------|------|------|---|---|---|---|---|---|---|--------------------|---|---|---|--------------|---------|------|------|------|------|------|----|-----------------|-----|-----|
| (THR RWY 35R) | 11 | 10 | 9 | 8 | 7 | 6 | 5 | 4 | 3 | 2 | 1 | 0 | 1 | 2 | 3 | 4 | 5 | 6 | 7 | 8 | 9 | 10 | 11 | 12 | NM from THR 35R | | |
| OCA (OCH) | A | | | | B | | | | C | | | | D | | | | GROUND SPEED | | | | | kt | 60 | 90 | 120 | 150 | 180 |
| STRAIGHT-IN APPROACH | 640 (360) | | | | | | | | | | | | FAF - MAPt 3.85 NM | | | | | MIN:sec | 3:51 | 2:34 | 1:56 | 1:32 | 1:17 | | | | |
| CIRCLING APPROACH W of aerodrome | ft AMSL | 690 | 790 | 890 | 990 | | | | | | | | | | | | | | | | | | | | | | |
| | VIS. m | 1900 | 2800 | 3700 | 4600 | | | | | | | | | | | | | | | | | | | | | | |

Not authorised.

AD 2 LHBC INSTRUMENT APPROACH CHART NDB RWY 35R

Approach from BC NDB:

Initial altitude: 4000.

Fly outbound on 191° and descend to 1800 or above.

At D 14.7 BKS DME turn left (185 KIAS max.) to 351° inbound BC NDB.

At D 12.6 BKS DME leave 1800 and descend to 1150. D 10.7 BKS VOR descend to 630.

Holding procedure:

Holding fix: BC NDB.

Left hand holding pattern.

Inbound track: 196°

Outbound track: 016°

Rate of turn: 3°/sec. or 25° bank angle
(whichever requires lesser bank)

Outbound timing: 1 min.

Minimum holding altitude: 4000

Final approach descent: 3.00°