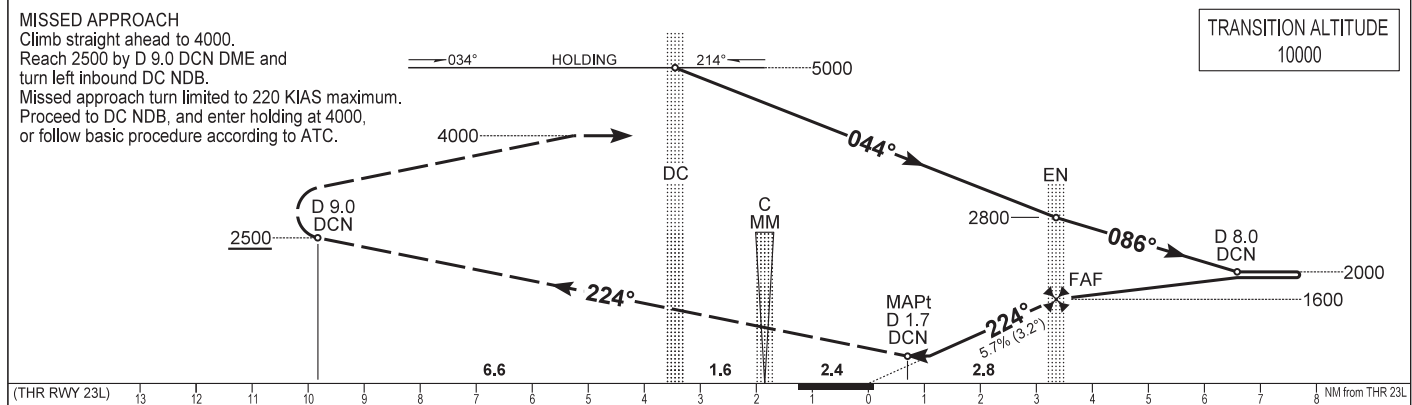
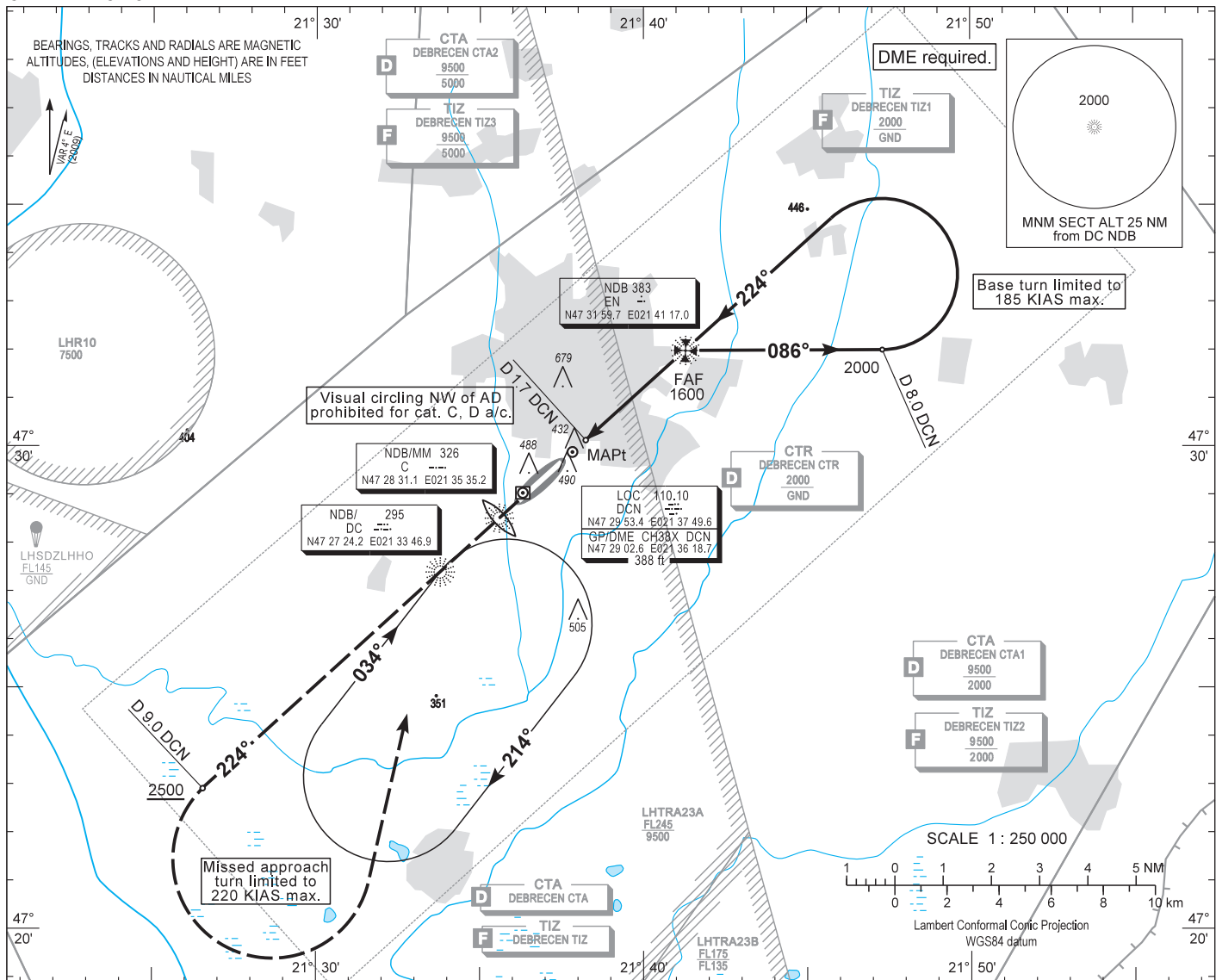


AIP HUNGARY

INSTRUMENT APPROACH CHART - ICAO
AERODROME ELEV 359
HEIGHTS RELATED TO THR RWY 23L - ELEV 359

DEBRECEN TOWER 125.900
DEBRECEN INFO 125.900
BUDAPEST INFORMATION (EAST) 133.000

DEBRECEN NDB RWY 23L
(ACFT CAT A, B, C, D)



(THR RWY 23L)					NM from THR 23L						
OCA (OCH)	A	B	C	D	GROUND SPEED						
STRAIGHT-IN APPROACH	920 (560)				kt	60	90	120	150	180	
CIRCLING APPROACH	ft AMSL	1060	1060	1160 SE of AD only	1160 SE of AD only	FAF - MAPt 2.78 NM					
	VIS. m	1900	2800	3700	4600	MIN:sec	2:47	1:51	1:24	1:07	0:56

AD 2 LHDC INSTRUMENT APPROACH CHART NDB RWY 23L

NDB approach from DC NDB:

Initial altitude: 5000.
Proceed to EN NDB and descend to 2800 .
At EN NDB turn right to 086° and descend to 2000 .
Fly outbound to D 8.0 DCN DME and turn left to track 224° inbound EN NDB (185 KIAS max.).
Proceed to EN NDB and descend to 1600.
At EN NDB descend to 920 on track 224°.

Holding procedure:

Holding fix: DC NDB.
Right hand holding pattern.

Sector 1 (parallel) entry prohibited.

Maximum speed: 220 KIAS
Inbound track: 034°
Outbound track: 214°
Rate of turn: 3°/sec. or 25° bank angle
(whichever requires lesser bank)
Outbound timing: 1 min.
Minimum holding altitude: 5000
4000 for Missed Approach

Final approach descent: 3.23°