

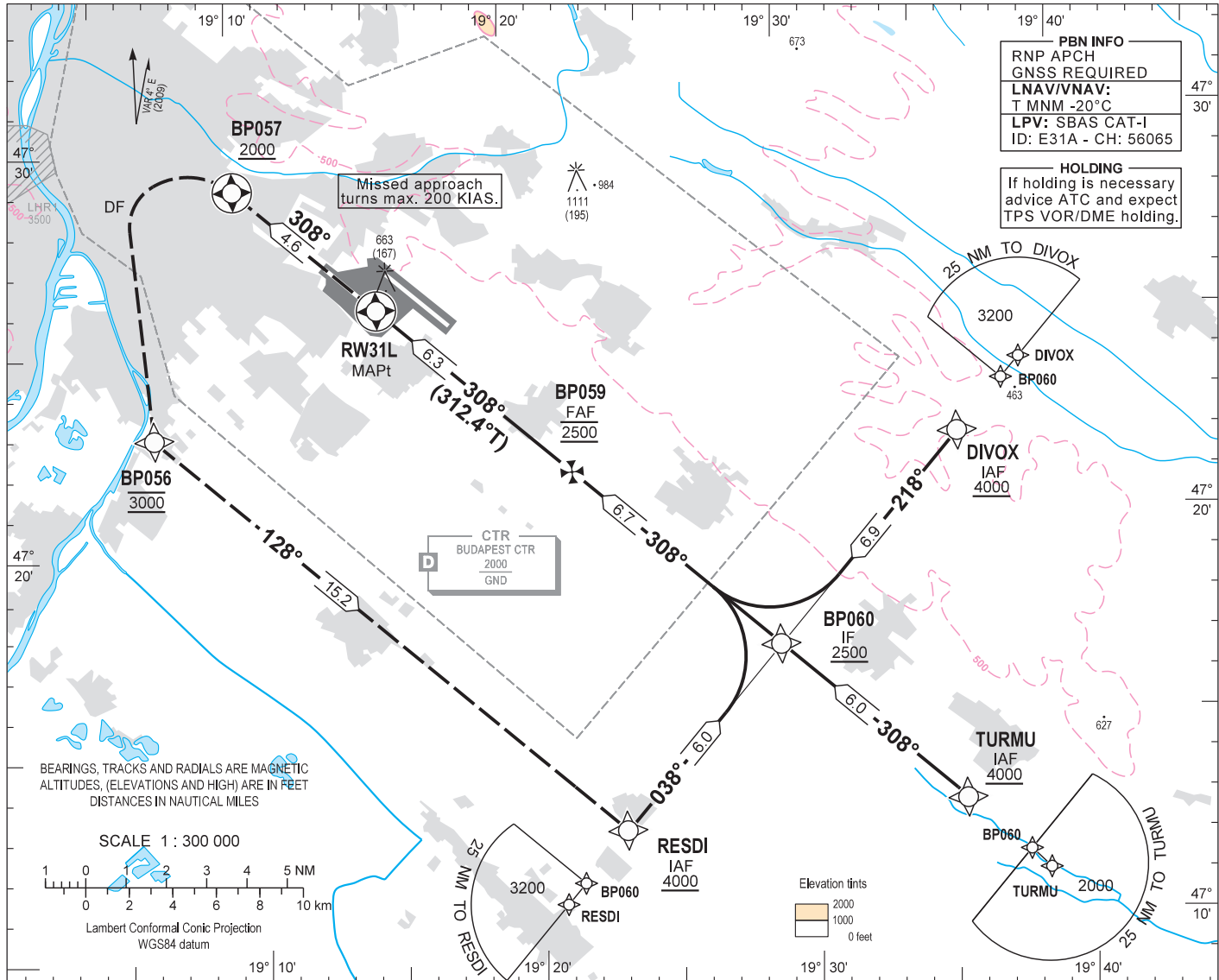
AIP HUNGARY

INSTRUMENT APPROACH CHART - ICAO

AERODROME ELEV 496
HEIGHTS RELATED TO THR RWY 31L - ELEV 448

BUDAPEST APPROACH	129.700	ATIS	132.380 (117.300)
	122.975	BUDAPEST TOWER	118.100
	119.500	BUDAPEST GROUND	121.900

BUDAPEST/LISZT FERENC
RNAV_(GNSS) RWY 31L
(ACFT CAT A, B, C, D)

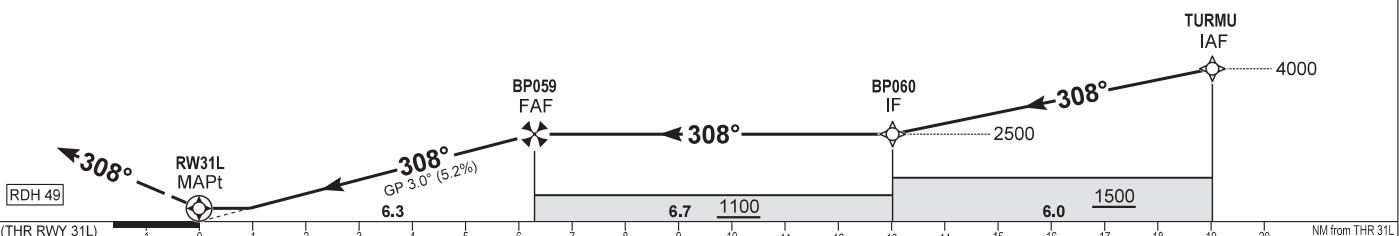


PBN INFO
RNP APCH
GNSS REQUIRED
LNAV/VNAV:
T MNM -20°C
LPV: SBAS CAT-I
ID: E31A - CH: 56065

HOLDING
If holding is necessary
advise ATC and expect
TPS VOR/DME holding.

MISSED APPROACH
Climb to BP057 at or above 2000.
At BP057 turn left direct to BP056 at 3000.
Then turn left and continue to RESDI at 3000.
Maximum turning speed: 200 KIAS.

TRANSITION ALTITUDE
10000



CAT OF ACFT		A	B	C	D	DIST THR / RWY31L								
OCA (H) STRAIGHT-IN	LNAV	2.5% macg	1050 (597)	1070 (621)	1100 (644)	1120 (664)	NM	6.0	5.0	4.0	3.0	2.0	1.0	0.0
		4.0% macg	900 (450)				ALTITUDE	ft	2410	2090	1770	1450	1130	820
	LNAV/VNAV	2.5% macg	951 (503)	961 (513)	982 (534)	1008 (560)	GS	kt	80	100	120	140	160	180
		4.0% macg	741 (293)	750 (302)	775 (327)	806 (358)	BP059 - RWY31L (6.3 NM) Timing not authorised for defining the MAPt.	min:sec	4:43	3:46	3:09	2:42	2:22	2:06
	LPV	2.5% macg	951 (503)	961 (513)	971 (523)	980 (532)	Rate of descent (318 ft/NM)	ft/min	420	530	640	740	850	960
		4.0% macg	608 (160)	618 (170)	628 (180)	638 (190)								
CIRCLING		970	1190	1310	1510									

AD 2 LHBP INSTRUMENT APPROACH CHART RNAV_(GNSS) RWY 31L

via TURMU

PT	WP ID	OverFly	Fix role	TD	VAR	CRS Val (°)	CRS Type	TIME (s)	DIST (NM)	MNM ALT (ft)	MAX ALT (ft)	IAS MAX (kt)	VRT ANG	NAV PERF
IF	TURMU		IAF		4.5					4000				RNP APCH
TF	BP060		IF		4.5	312.6	TT		6.0	2500				RNP APCH
TF	BP059		FAF		4.5	312.5	TT		6.7	2500	2500			RNP APCH
TF	RW31L	Y	MAPt		4.5	312.4	TT		6.3	497			-3.0	RNP APCH
TF	BP057	Y	MATF		4.5	312.4	TT		4.6	2000		200		RNP APCH
DF	BP056		MATF		4.5					3000	3000	200		RNP APCH
TF	RESDI				4.5	132.2	TT		15.2	3000	3000	200		RNP APCH

via DIVOX

PT	WP ID	OverFly	Fix role	TD	VAR	CRS Val (°)	CRS Type	TIME (s)	DIST (NM)	MNM ALT (ft)	MAX ALT (ft)	IAS MAX (kt)	VRT ANG	NAV PERF
IF	DIVOX		IAF		4.5					4000				RNP APCH
TF	BP060		IF		4.5	222.6	TT		6.9	2500				RNP APCH
TF	BP059		FAF		4.5	312.5	TT		6.7	2500	2500			RNP APCH
TF	RW31L	Y	MAPt		4.5	312.4	TT		6.3	497			-3.0	RNP APCH
TF	BP057	Y	MATF		4.5	312.4	TT		4.6	2000		200		RNP APCH
DF	BP056		MATF		4.5					3000	3000	200		RNP APCH
TF	RESDI				4.5	132.2	TT		15.2	3000	3000	200		RNP APCH

via RESDI

PT	WP ID	OverFly	Fix role	TD	VAR	CRS Val (°)	CRS Type	TIME (s)	DIST (NM)	MNM ALT (ft)	MAX ALT (ft)	IAS MAX (kt)	VRT ANG	NAV PERF
IF	RESDI		IAF		4.5					4000				RNP APCH
TF	BP060		IF		4.5	042.4	TT		6.0	2500				RNP APCH
TF	BP059		FAF		4.5	312.5	TT		6.7	2500	2500			RNP APCH
TF	RW31L	Y	MAPt		4.5	312.4	TT		6.3	497			-3.0	RNP APCH
TF	BP057	Y	MATF		4.5	312.4	TT		4.6	2000		200		RNP APCH
DF	BP056		MATF		4.5					3000	3000	200		RNP APCH
TF	RESDI				4.5	132.2	TT		15.2	3000	3000	200		RNP APCH

SBAS FAS Data Block Coding Data

FAS-DB (CRC wrapped data)

Operation type	0
SBAS provider ID	1
Airport identifier	LHBP
RWY	31L
Approach performance designator	0
Route indicator	
Reference path data selector	0
Reference path identifier	E31A
LTP/FTP latitude	472549.7100N
LTP/FTP longitude	0191500.8900E
LTP/FTP ellipsoidal height (m)	180.2
FPAP latitude	472655.5485N
FPAP longitude	0191314.3920E
Threshold crossing height (TCH)	15
TCH units	1
Glide path angle (degrees)	3.00
Course width at threshold (m)	105.00
Length offset (m)	16
Horizontal alert limit (m)	40.0
Vertical alert limit (m)	35.0
Computed Data Block	10 10 02 08 0C DF 00 00 01 31 33 05 1C DE 5A 14 34 E5 42 08 0A 1B 5D 02 02 FC BF FC 2C 81 2C 01 64 02 C8 AF CB 46 55 AB
Computed CRC	CB4655AB

FAS-DB (not CRC wrapped)

ICAO code	LH
LTP/FTP Orthometric height (m)	136.7
FPAP Orthometric height (m)	136.7

WAYPOINT COORDINATES

WP ID	Latitude	Longitude
TURMU	N47 13 00.0	E019 35 37.3
DIVOX	N47 22 06.5	E019 35 57.5
RESDI	N47 12 38.0	E019 23 11.1
BP060	N47 17 03.4	E019 29 08.0
BP059	N47 21 35.4	E019 21 51.1
RW31L	N47 25 49.71	E019 15 00.89
BP057	N47 28 56.5	E019 09 58.6
BP056	N47 22 52.0	E019 06 41.0