

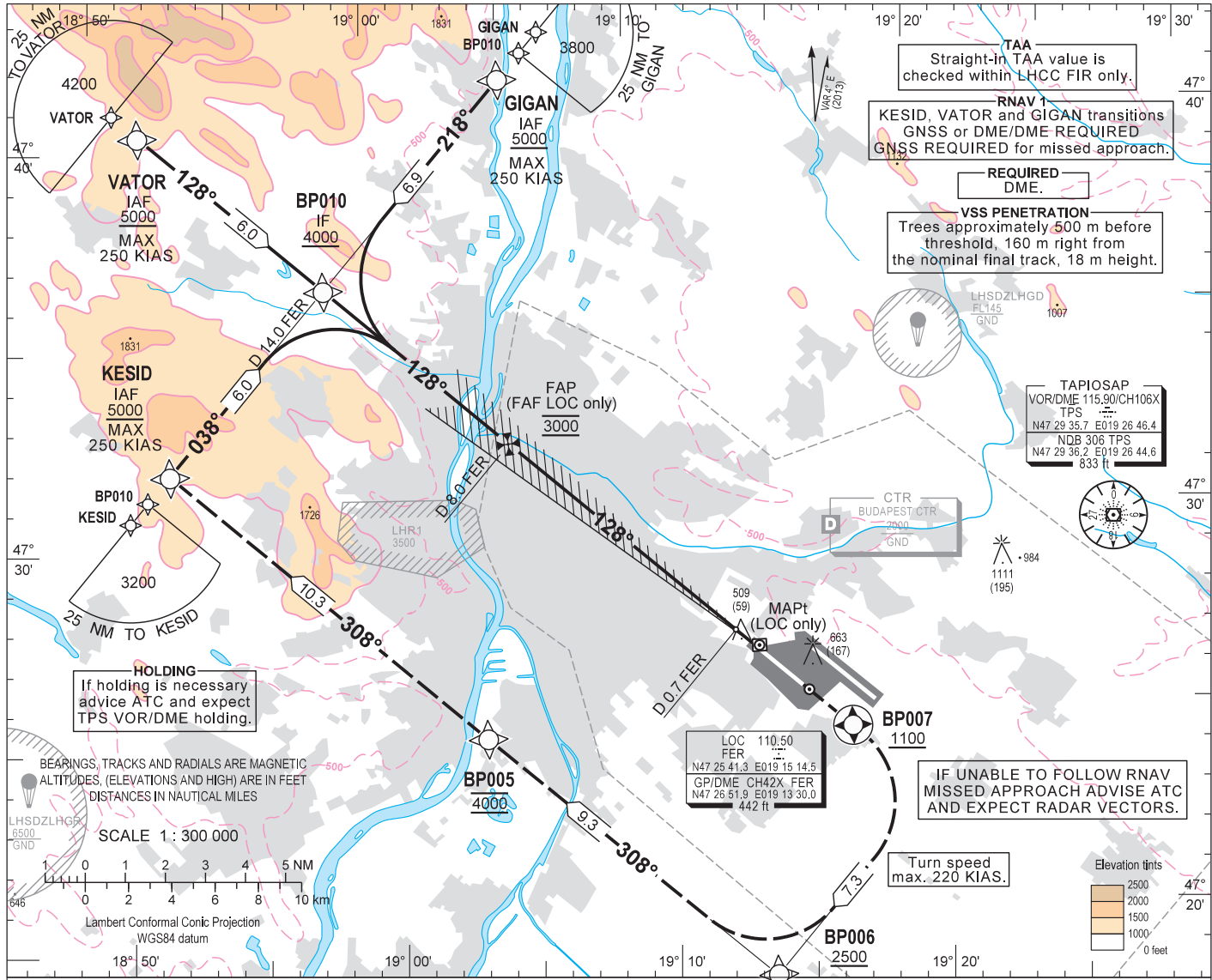
AIP HUNGARY

INSTRUMENT APPROACH CHART - ICAO

AERODROME ELEV 496  
HEIGHTS RELATED TO THR RWY 13R - ELEV 448

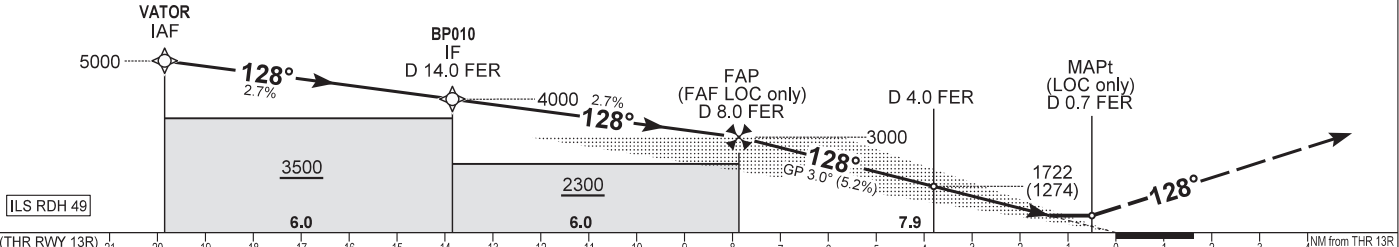
BUDAPEST APPROACH 129.700 ATIS 132.380 (117.300)  
122.975 BUDAPEST TOWER 118.100  
119.500 BUDAPEST GROUND 121.900

BUDAPEST/LISZT FERENC  
ILS or LOC RWY 13R  
(ACFT CAT A, B, C, D)



TRANSITION ALTITUDE  
10000

MISSED APPROACH  
Cross BP007 at 1100 or above then turn right inbound BP006.  
Maximum turning speed 220 KIAS.  
Cross BP006 at 2500 or above and turn right to track 308° inbound KESID.  
Reach 4000 by BP005.



CAT OF ACFT		A	B	C	D	DME FER	NM	7.0	6.0	5.0	4.0	3.0	2.0	
OCA (H) STRAIGHT-IN	CAT I	2.5% macg	958 (510)	967 (519)	977 (529)	987 (539)	DIST THR / RWY 13R	NM	6.8	5.8	4.8	3.8	2.8	1.8
		3.4% macg	635 (187)	647 (199)	655 (207)	665 (217)	ALTITUDE	ft	2680	2360	2050	1730	1410	1090
	CAT II	2.5% macg	869 (421)	885 (437)	898 (450)	912 (464)	Timing not authorised for defining the MAPt.							
		3.6% macg	530 (82)	547 (99)	559 (111)	574 (126)	GS	kt	80	100	120	140	160	180
LOC	2.5% macg	1220 (772)	1250 (802)	1270 (822)	1290 (842)	FAP/FAF - THR 13R (7.9 NM)	min:sec	5:54	4:43	3:56	3:23	2:57	2:38	
	3.2% macg	940 (492)				Rate of descent (324.7 ft/NM)	ft/min	430	540	640	750	860	970	
CIRCLING		980	1190	1310	1510									

NOTE: CAT IIIB APPROVED

**AD 2 LHBP INSTRUMENT APPROACH CHART ILS OR LOC RWY 13R**

SEQ	P&T	Name	Latitude	Longitude	FlyOver	Bearing/ (Len Dur)	Turn Direction	Altitude (FT)	IAS (KT)	VPA/RDH (FT)	RNP (NM)
010	IF	KESID(IAF)	N47 31 47.2	E018 52 10.0	N	...	...	+5000	-250	...	...
020	TF	BP010(IF)	N47 36 13.8	E018 58 09.0	N	042 T/6.01 NM	...	+4000	...	-1.6°	...
010	IF	GIGAN(IAF)	N47 41 17.3	E019 04 58.0	N	...	...	+5000	-250	...	...
020	TF	BP010(IF)	N47 36 13.8	E018 58 09.0	N	222 T/6.85 NM	...	+4000	...	-1.4°	...
010	IF	VATOR(IAF)	N47 40 15.8	E018 51 35.1	N	...	...	+5000	-250	...	...
020	TF	BP010(IF)	N47 36 13.8	E018 58 09.0	N	132 T/6.00 NM	...	+4000	...	-1.6°	...
010	IF	BP010(IF)	N47 36 13.8	E018 58 09.0	N	...	...	+4000	...	...	...
020	CF	BP009(FAP)	N47 32 12.4	E019 04 40.2	N	132 T/5.97 NM	...	@3000	...	-1.6°	...
030	CF	RW13R(LTP/FTP)	N47 26 55.3	E019 13 14.7	Y	132 T/7.86 NM	...	+497	...	-3.0°/15	...
010	IF	MAPt (LOC only)	N47 27 16.7	E019 12 40.1	Y	...	...	+940	...	...	...
020	TF	BP007(TP)	N47 24 44.4	E019 16 46.5	Y	132 T/3.24 NM	...	+1100	...	1.9°	...
030	CF	BP006	N47 18 37.5	E019 13 32.8	N	222 T/7.34 NM	R	+2500	-220	1.9°	...
040	TF	BP005	N47 24 52.2	E019 03 22.1	N	312 T/9.32 NM	R	@4000	-220	1.4°	...
050	TF	KESID	N47 31 47.2	E018 52 10.0	Y	312 T/10.28 NM	...	@4000	...	0.0°	...

Final approach descent: 3.0°.  
LOC only descent: 3.01°.