

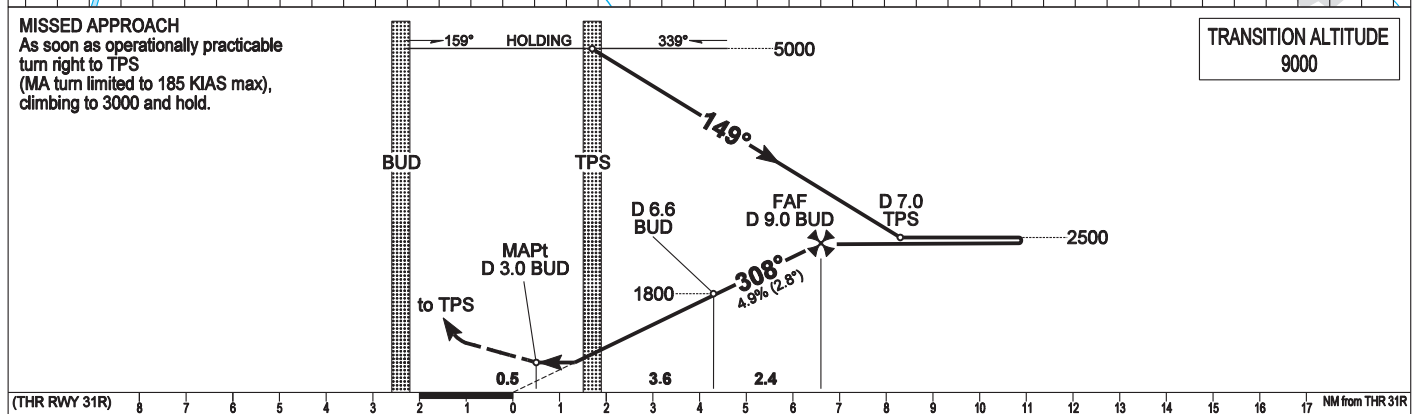
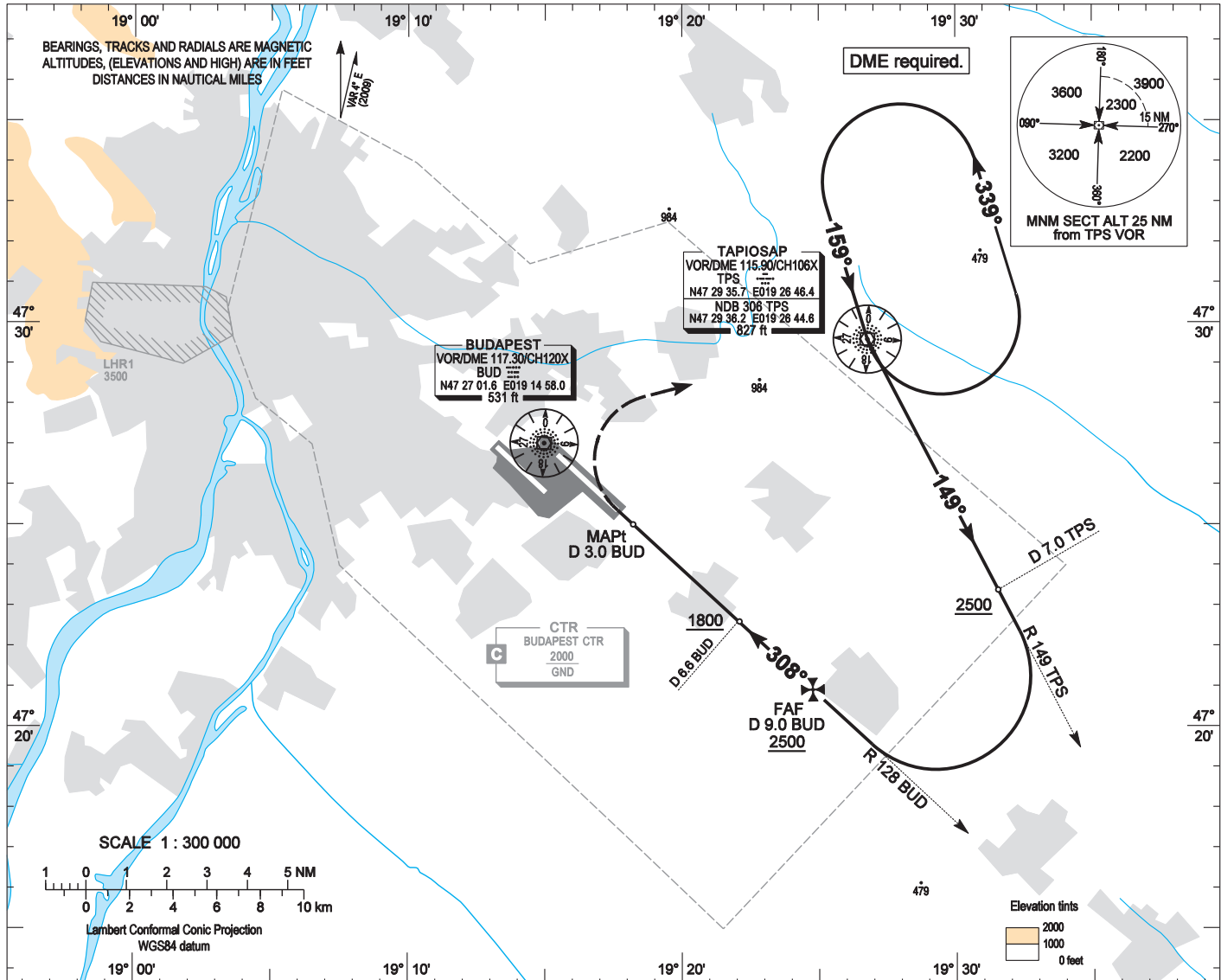
AIP HUNGARY

INSTRUMENT
APPROACH
CHART - ICAO

AERODROME ELEV 496
HEIGHTS RELATED TO
THR RWY 31R - ELEV 416

BUDAPEST APPROACH	129.700	ATIS	132.375 (117.300)
	122.975	BUDAPEST TOWER	118.100
	119.500	BUDAPEST GROUND	121.900

BUDAPEST/LISZT FERENC
VOR RWY 31R
(ACFT CAT A, B, C, D)



		(THR RWY 31R)				NM from THR 31R							
		A	B	C	D	NOMINAL 3° GP from BUD		NM	4.0	5.0	6.0	7.0	8.0
STRAIGHT-IN APPROACH	ft	860 (444)				ALT		ft	960	1280	1590	1910	2220
CIRCLING APPROACH	ft AMSL	950	1100	1280	1460			kt	60	90	120	150	180
	VIS. m	1900	2800	3700	4600			MIN:sec	6:00	4:00	3:00	2:24	2:00
						FAF - MAPt 6.00 NM							

AD 2 LHBP INSTRUMENT APPROACH CHART VOR RWY 31R

VOR approach procedure:

Initial level: 5000. Depart TPS VOR on R 149 TPS VOR and descend to 2500.
At D 7.0 TPS DME turn right to intercept inbound R 128 BUD VOR.
At D 9.0 BUD DME descend to 1800.
At 6.6 BUD DME descend to 860 to D 3.0 BUD DME.

Holding procedure:

Holding fix: TPS VOR.
Left hand holding pattern.

Maximum speed:	230 KIAS
Inbound track:	159°
Outbound track:	339°
Rate of turn:	3°/sec. or 25° bank angle (whichever requires lesser bank)
Outbound timing:	1 min.
Minimum holding altitude:	5000 (ATC) 3000 for Missed approach (ATC)

Final approach descent: 2.85°