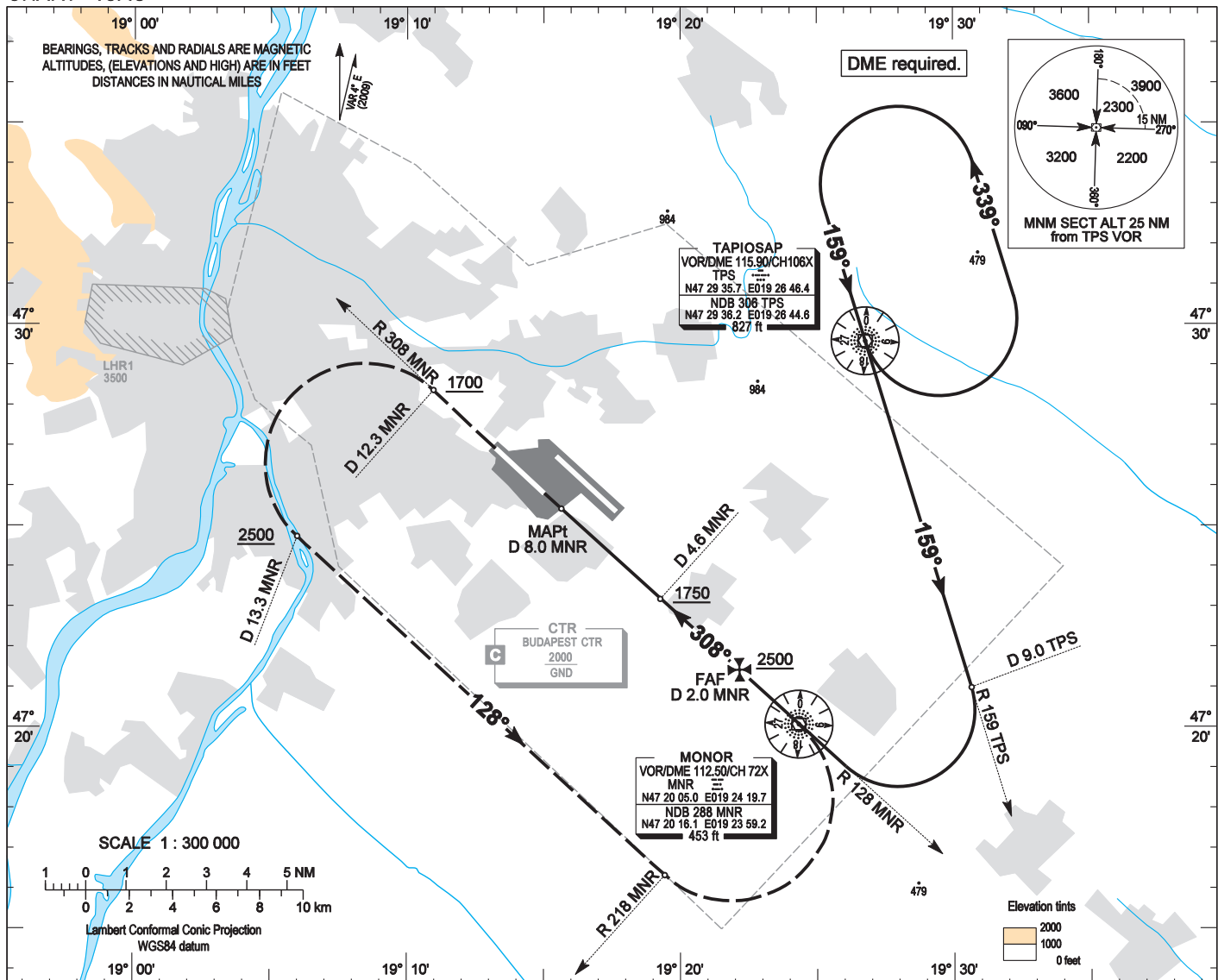


AIP HUNGARY

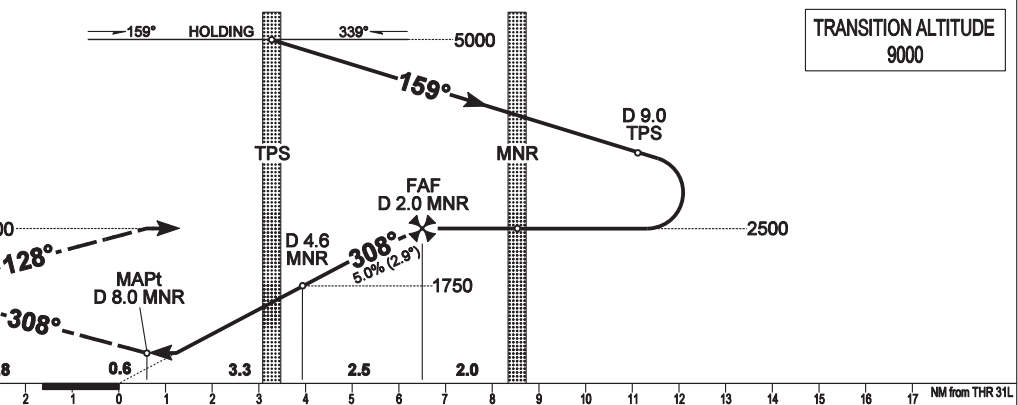
INSTRUMENT APPROACH CHART - ICAO
AERODROME ELEV 496
HEIGHTS RELATED TO THR RWY 31L - ELEV 448

BUDAPEST APPROACH 129.700
122.975
119.500
ATIS 132.375 (117.300)
BUDAPEST TOWER 118.100
BUDAPEST GROUND 121.900

BUDAPEST/LISZT FERENC
VOR RWY 31L
(ACFT CAT A, B, C, D)



MISSED APPROACH
Continuous climb to 2500.
Proceed straight ahead.
At D 12.3 MNR DME turn left to track 128°.
When crossing R 218 MNR VOR turn left to MNR.



		(THR RWY 31L)					NM from THR 31L					
OCA (OCH)		A	B	C	D	NOMINAL 2.9° GP from MNR						
STRAIGHT-IN APPROACH	ft	830 (380)					NM	3.0	4.0	5.0	6.0	7.0
CIRCLING APPROACH	ft AMSL	950	1100	1280	1460	ALT	ft	2200	1890	1580	1270	960
	VIS. m	1900	2800	3700	4600		kt	60	90	120	150	180
						FAF - MAPt 6.00 NM	MIN:sec	6:00	4:00	3:00	2:24	2:00

AD 2 LHBP INSTRUMENT APPROACH CHART VOR RWY 31L

VOR approach procedure:

Initial level: 5000.

Depart TPS VOR on R 159 TPS VOR. Descend to 2500.

At D 9.0 TPS DME turn right to intercept inbound R 128 MNR VOR, continue outbound on R 308 MNR VOR, and at D 2.0 MNR DME descend to 1750 to D 4.6 MNR DME. After passing D 4.6 MNR DME descend to 830.

Holding procedure:

Holding fix: TPS VOR.

Left hand holding pattern.

Maximum speed:	230 KIAS
Inbound track:	159°
Outbound track:	339°
Rate of turn:	3°/sec. or 25° bank angle (whichever requires lesser bank)
Outbound timing:	1 min.
Minimum holding altitude:	5000 (ATC) 3000 for Missed approach (ATC)

Final approach descent: 2.90°