

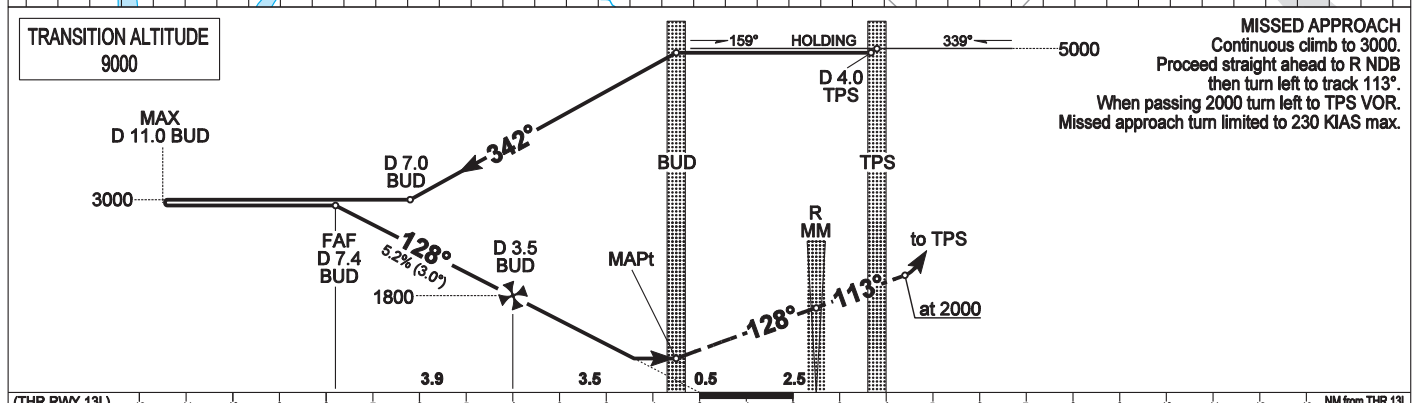
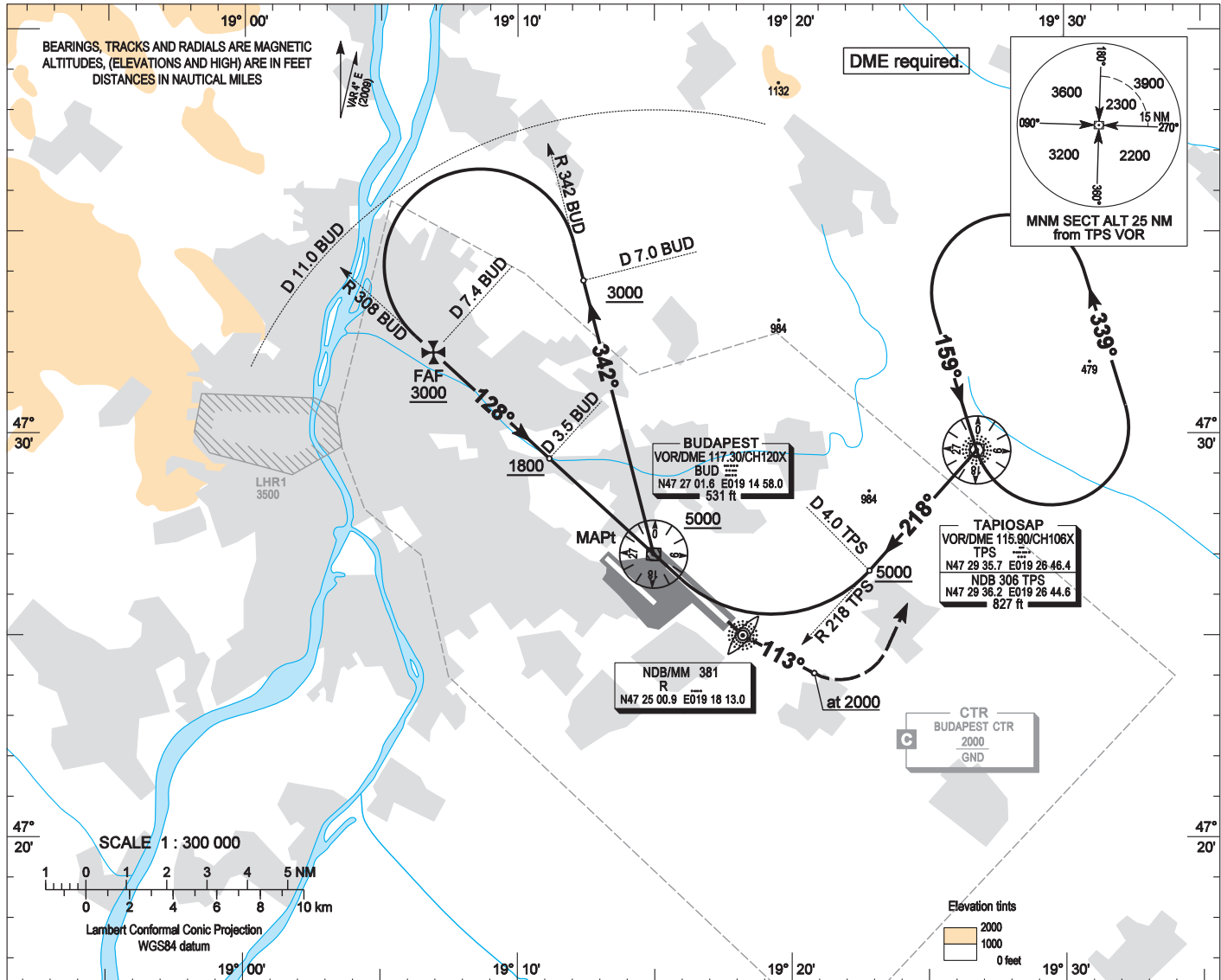
AIP HUNGARY

INSTRUMENT
APPROACH
CHART - ICAO

AERODROME ELEV 496
HEIGHTS RELATED TO
THR RWY 13L - ELEV 496

BUDAPEST APPROACH 129.700 ATIS 132.375 (117.300)
122.975 BUDAPEST TOWER 118.100
119.500 BUDAPEST GROUND 121.900

BUDAPEST/LISZT FERENC
VOR RWY 13L
(ACFT CAT A, B, C, D)



		NM from THR 13L																
		A	B	C	D													
OCA (OCH)																		
STRAIGHT-IN APPROACH	ft	900 (410)							NOMINAL 3° GP from BUD	NM	7.0	6.0	5.0	4.0	3.0	2.0	1.0	
									ALT	ft	2920	2600	2280	1960	1650	1330	1010	
CIRCLING APPROACH	ft AMSL	950	1100	1280	1460													
	VIS. m	1900	2800	3700	4600													
										kt	60	90	120	150	180			
									FAF (D 7.4 BUD) - MAPt 7.40 NM		MIN:sec	7:30	5:0	3:45	3:00	2:30		

AD 2 LHBP INSTRUMENT APPROACH CHART VOR RWY 13L

VOR approach procedure:

Initial level: 5000. Depart TPS VOR on R 218 TPS VOR.
At D 4.0 TPS DME turn right to intercept inbound R 128 BUD VOR.
Leave BUD VOR on R 342 BUD VOR and descend to 3000.
At D 7.0 BUD DME turn left to intercept inbound R 308 BUD VOR.
The farthest point of the turn arc may not be farther than D 11.0 BUD DME.
When established inbound R 308 BUD VOR (at D 7.4 BUD DME):
descend to 1800 to D 3.5 BUD DME and to 900 to BUD VOR.

Holding procedure:

Holding fix: TPS VOR.
Left hand holding pattern.
Maximum speed: 230 KIAS
Inbound track: 159°
Outbound track: 339°
Rate of turn: 3°/sec. or 25° bank angle
(whichever requires lesser bank)
Outbound timing: 1 min.
Minimum holding altitude: 5000 (ATC)
3000 for Missed approach (ATC)

Final approach descent: 2.97°