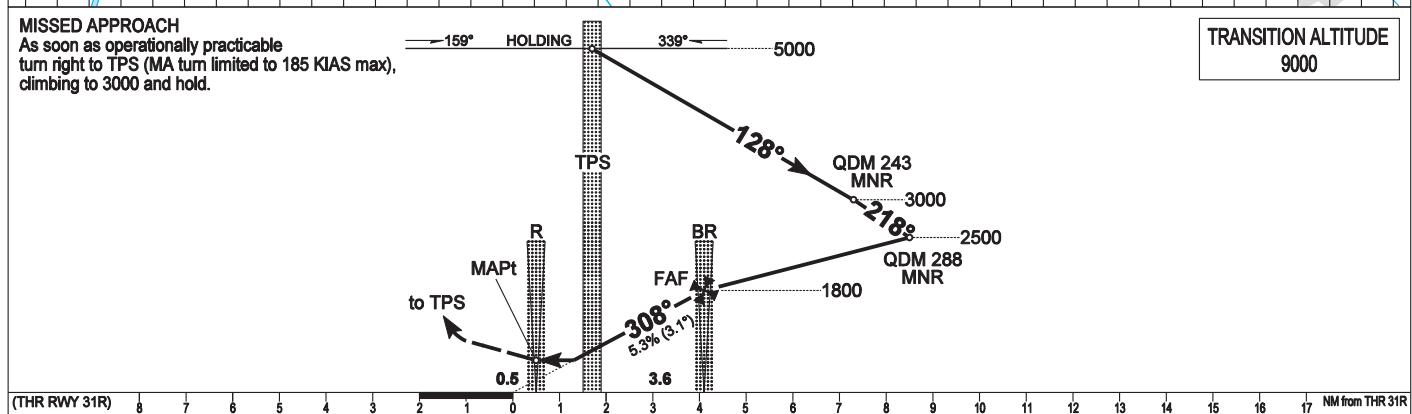
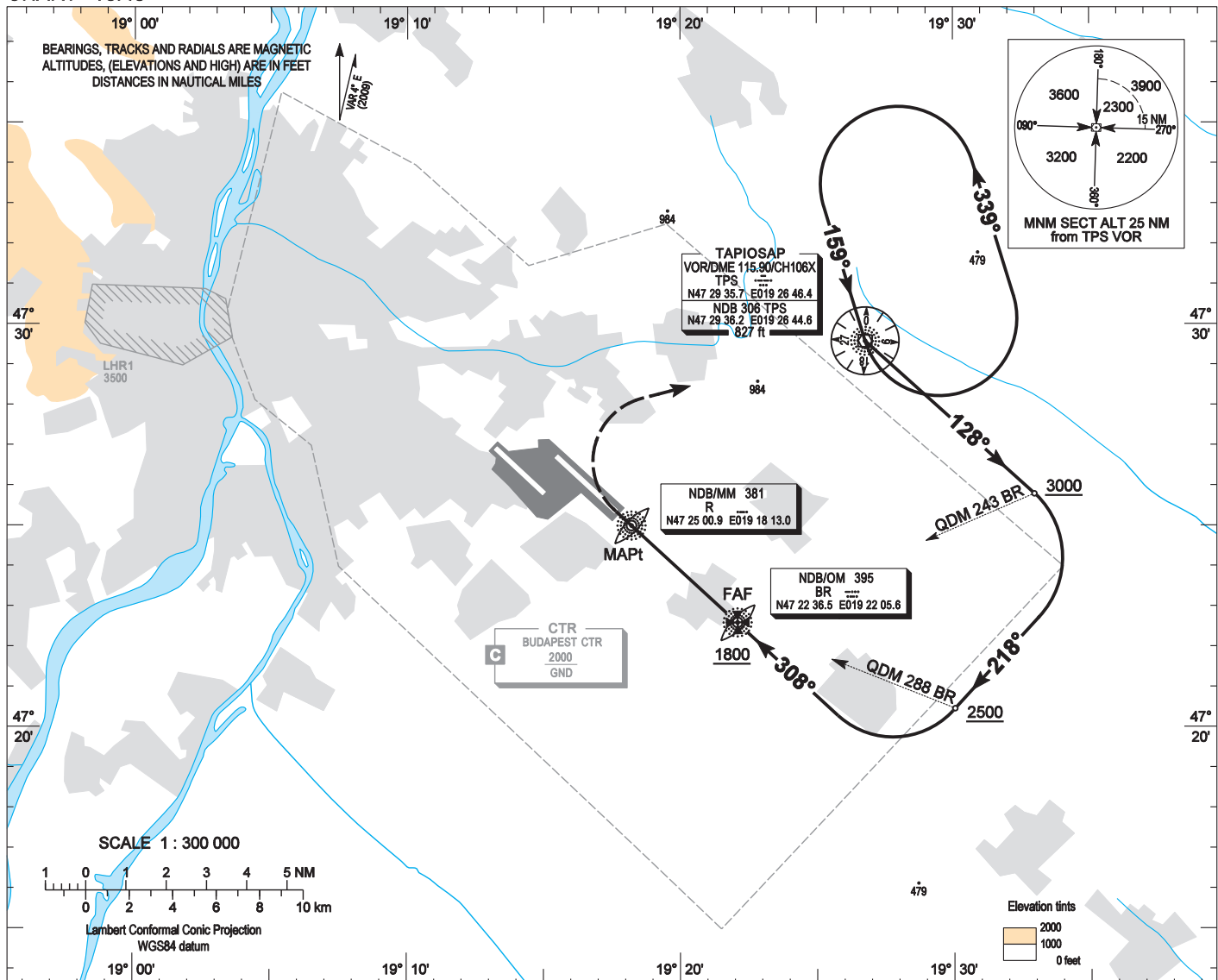


AIP HUNGARY

INSTRUMENT APPROACH CHART - ICAO
AERODROME ELEV 496
HEIGHTS RELATED TO THR RWY 31R - ELEV 416

BUDAPEST APPROACH 129.700 ATIS 132.375 (117.300)
122.975 BUDAPEST TOWER 118.100
119.500 BUDAPEST GROUND 121.900

BUDAPEST/LISZT FERENC
NDB RWY 31R
(ACFT CAT A, B, C, D)



OCA (OCH)		A	B	C	D								
STRAIGHT-IN APPROACH		880 (464)				FAF (BR) - MAPt 3.60 NM		kt	60	90	120	150	180
CIRCLING APPROACH	ft AMSL	950	1100	1280	1460			MIN:sec	3:36	2:24	1:48	1:26	1:12
	VIS. m	1900	2800	3700	4600								

AD 2 LHBP INSTRUMENT APPROACH CHART NDB RWY 31R

NDB approach procedure:

Initial level: 5000.

Depart TPS VOR on heading 128° and descend to 3000.

At BR NDB QDM 243° turn right on heading 218° and descend to 2500.

At BR NDB QDM 288° turn right on heading 308° (inbound to BR NDB) and descend to 1800.

After crossing BR NDB follow R NDB and descend to 880.

Holding procedure:

Holding fix: TPS VOR.

Left hand holding pattern.

Maximum speed: 230 KIAS

Inbound track: 159°

Outbound track: 339°

Rate of turn: 3°/sec. or 25° bank angle

(whichever requires lesser bank)

Outbound timing: 1 min.

Minimum holding altitude: 5000 (ATC)

3000 for Missed approach (ATC)

Final approach descent: 3.07°