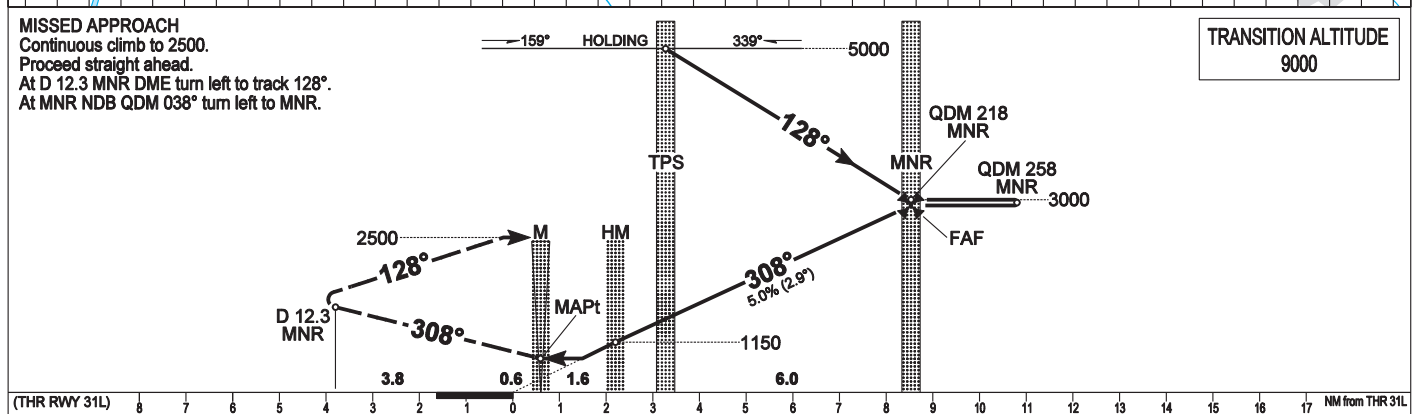
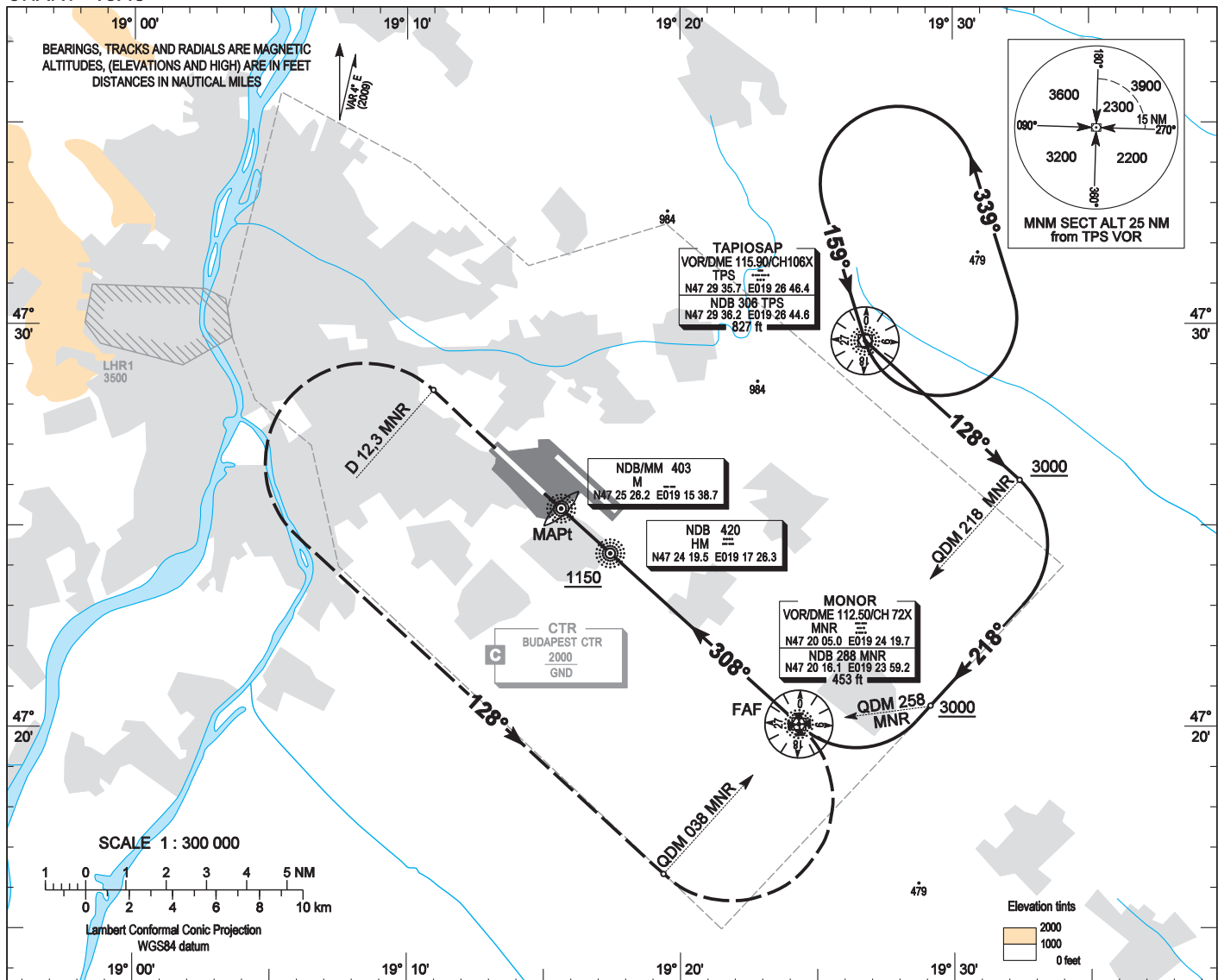


AIP HUNGARY

INSTRUMENT APPROACH CHART - ICAO  
AERODROME ELEV 496  
HEIGHTS RELATED TO THR RWY 31L - ELEV 448

BUDAPEST APPROACH	129.700	ATIS	132.375 (117.300)
	122.975	BUDAPEST TOWER	118.100
	119.500	BUDAPEST GROUND	121.900

BUDAPEST/LISZT FERENC  
NDB RWY 31L  
(ACFT CAT A, B, C, D)



(THR RWY 31L)		8	7	6	5	4	3	2	1	0	1	2	3	4	5	6	7	8	9	10	11	12	13	14	15	16	17	NM from THR 31L
OCA (OCH)							A	B	C	D												kt	60	90	120	150	180	
STRAIGHT-IN APPROACH	ft	900 (460)														FAF (MNR) - HM 6.02 NM					MIN:sec	6:00	4:00	3:00	2:24	2:00		
CIRCLING APPROACH	ft AMSL	950	1100	1280	1460						HM - MAPt 1.64 NM					MIN:sec	1:38	1:00	0:49	0:39	0:32							
	VIS. m	1900	2800	3700	4600																							

## AD 2 LHBP INSTRUMENT APPROACH CHART NDB RWY 31L

### NDB approach from TPS VOR:

Initial altitude: 5000.

Depart TPS VOR on heading 128° and descend to 3000.

At MNR NDB QDM 218° turn right on heading 218°.

At MNR NDB QDM 258° turn right on heading 308° inbound to MNR NDB  
then proceed to HM NDB and descend to 1150.

When crossing HM NDB follow M NDB and descend 900.

### Holding procedure:

Holding fix: TPS VOR.

Left hand holding pattern.

Maximum speed: 230 KIAS

Inbound track: 159°

Outbound track: 339°

Rate of turn: 3°/sec. or 25° bank angle  
(whichever requires lesser bank)

Outbound timing: 1 min.

Minimum holding altitude: 5000 (ATC)

Final approach descent: 2.87°