

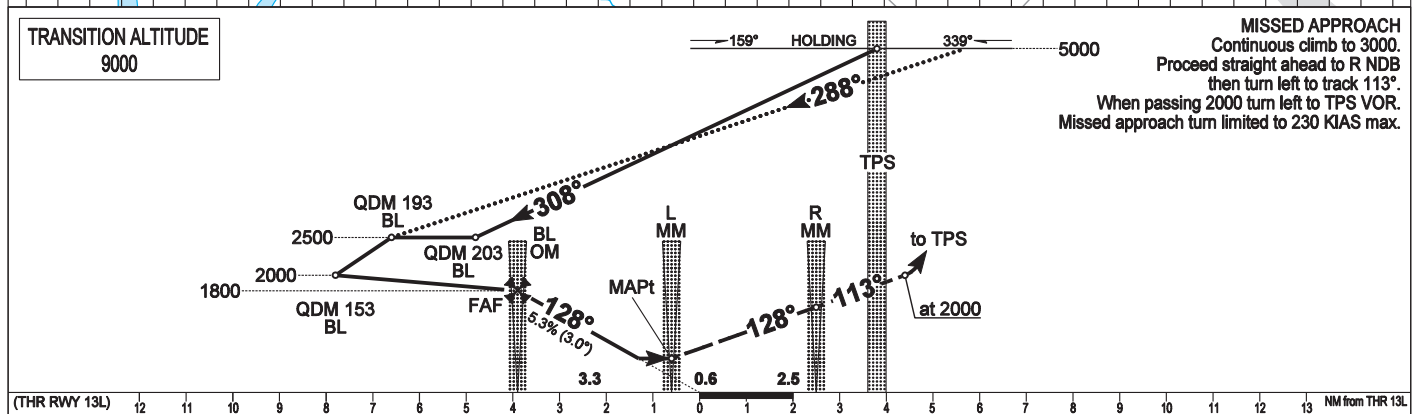
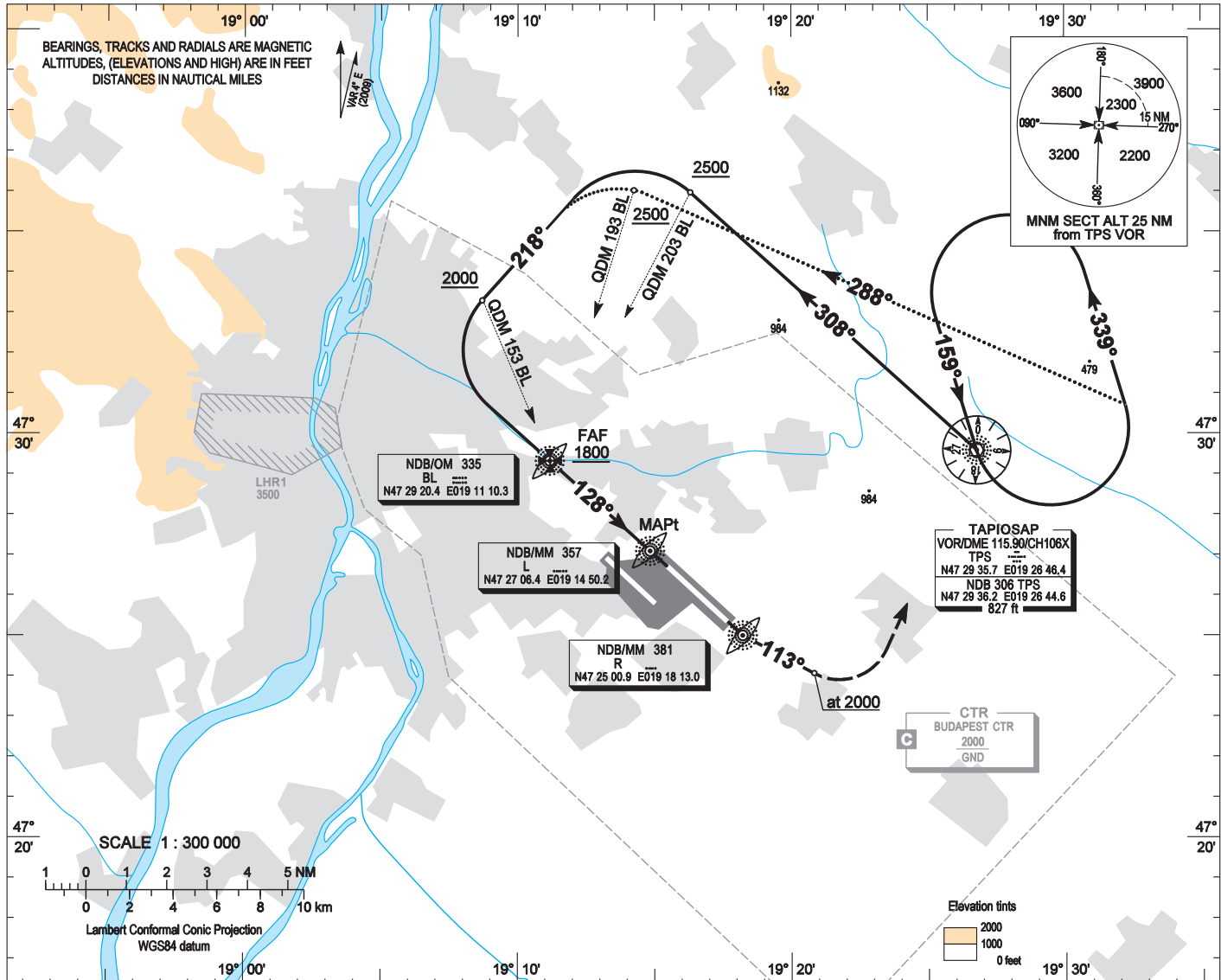
AIP HUNGARY

INSTRUMENT  
APPROACH  
CHART - ICAO

AERODROME ELEV 496  
HEIGHTS RELATED TO  
THR RWY 13L - ELEV 496

BUDAPEST APPROACH 129.700 ATIS 132.375 (117.300)  
122.975 BUDAPEST TOWER 118.100  
119.500 BUDAPEST GROUND 121.900

BUDAPEST/LISZT FERENC  
NDB RWY 13L  
(ACFT CAT A, B, C, D)



(THR RWY 13L)						NM from THR 13L					
OCA (OCH)		A	B	C	D						
STRAIGHT-IN APPROACH	ft	900 (410)				FAF (BL) - MAPt (L) 3.34 NM					
CIRCLING APPROACH	ft AMSL	950	1100	1280	1460	kt	60	90	120	150	180
	VIS. m	1900	2800	3700	4600	MIN:sec	3:20	2:14	1:40	1:20	1:07

## AD 2 LHBP INSTRUMENT APPROACH CHART NDB RWY 13L

### NDB approach procedure:

Initial level: 5000.

Depart TPS VOR on heading 308° and descend to 2500.

At BL NDB QDM 203° turn left on heading 218° and descend to 2000.

At BL NDB QDM 153° turn left on heading 128° (inbound to BL NDB) and descend to 1800.

When crossing BL NDB proceed to L NDB and descend to 900.

### NDB approach from TPS holding procedure:

When crossing TPS VOR holding fix turn left on heading 288° and descend to 2500.

At BL NDB QDM 193° turn left on heading 218° and descend to 2000.

At BL NDB QDM 153° turn left and follow the basic procedure.

### Holding procedure:

Holding fix: TPS VOR.

Left hand holding pattern.

Maximum speed: 230 KIAS

Inbound track: 159°

Outbound track: 339°

Rate of turn: 3°/sec. or 25° bank angle

(whichever requires lesser bank)

Outbound timing: 1 min.

Minimum holding altitude: 5000 (ATC)

3000 for Missed approach (ATC)

Final approach descent: 3.03°