

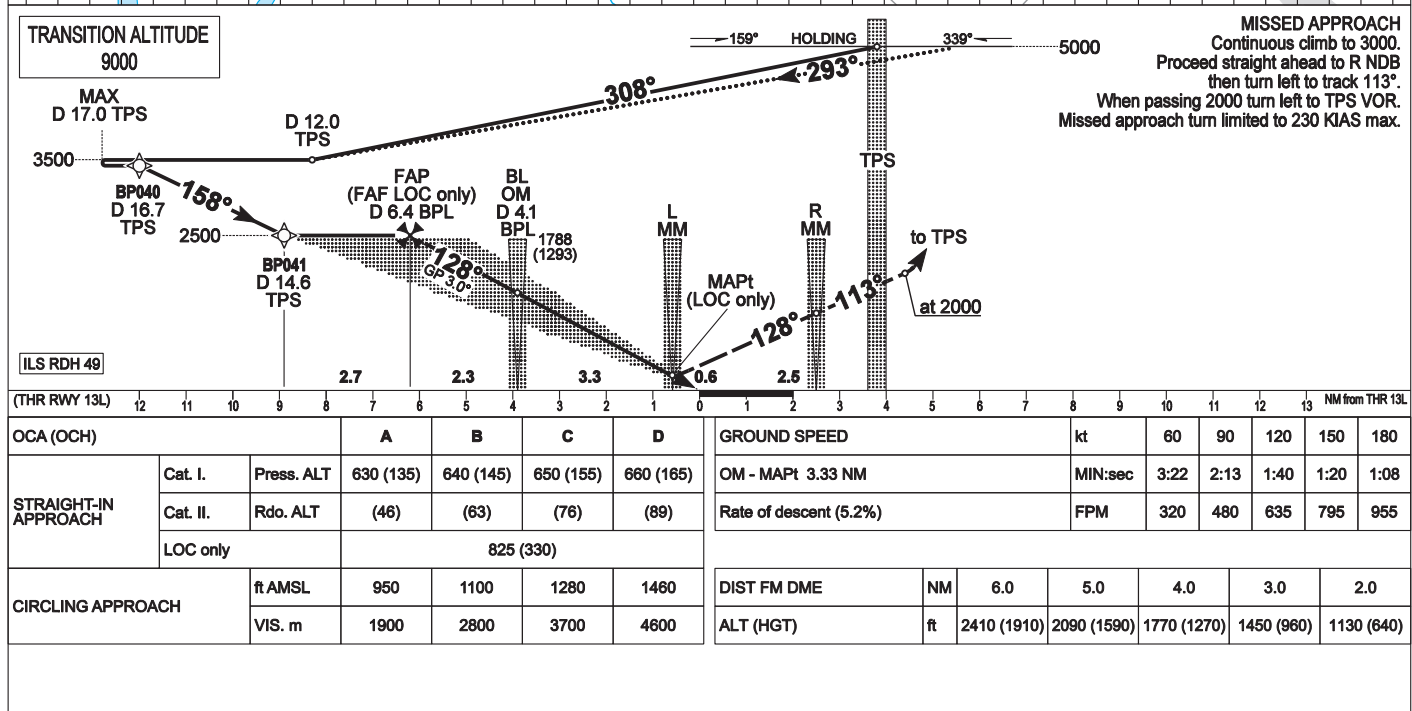
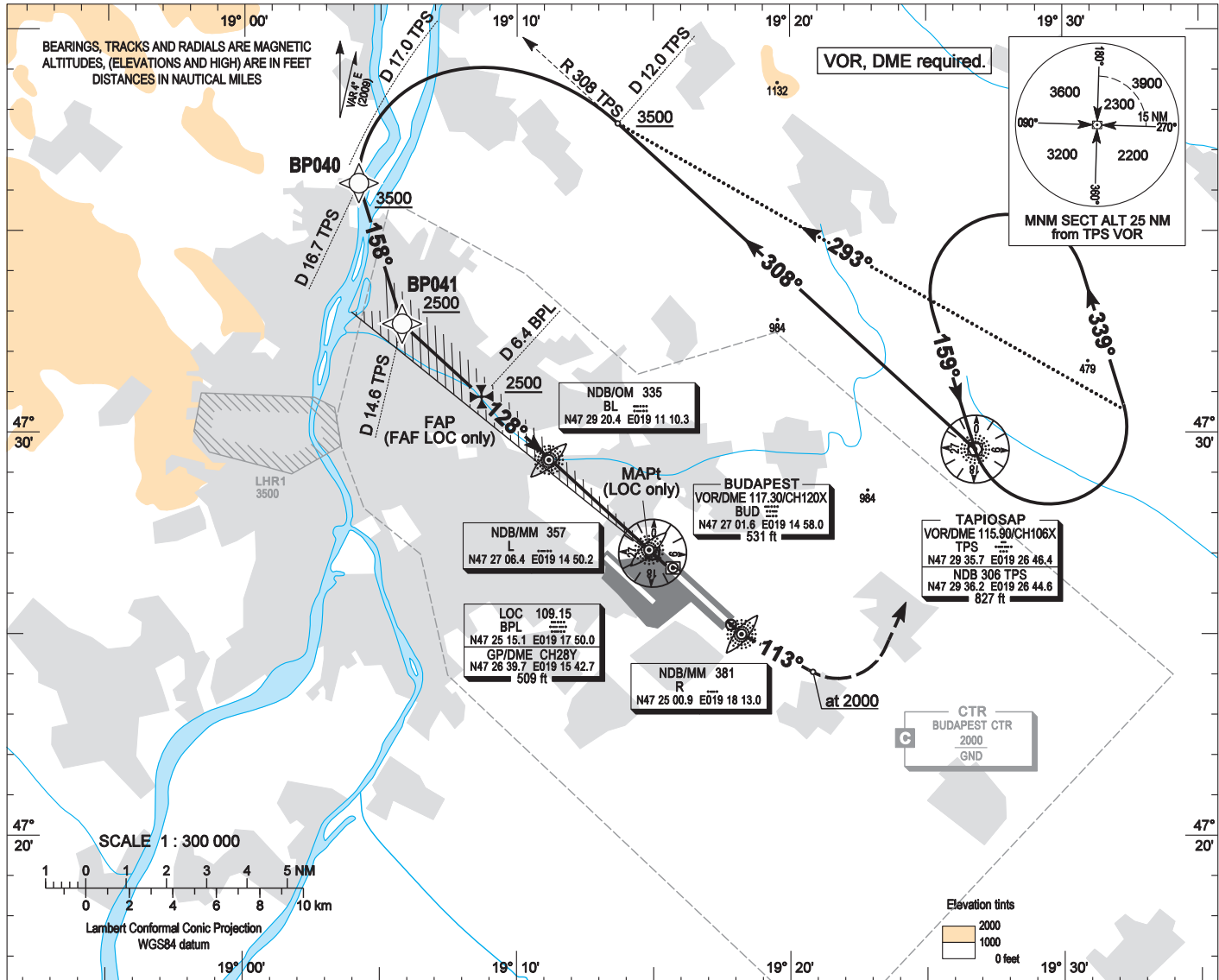
AIP HUNGARY

INSTRUMENT
APPROACH
CHART - ICAO

AERODROME ELEV 496
HEIGHTS RELATED TO
THR RWY 13L - ELEV 496

BUDAPEST APPROACH 129.700 ATIS 132.375 (117.300)
122.975 BUDAPEST TOWER 118.100
119.500 BUDAPEST GROUND 121.900

BUDAPEST/LISZT FERENC
ILS or LOC RWY 13L
(ACFT CAT A, B, C, D)



AD 2 LHBP INSTRUMENT APPROACH CHART ILS OR LOC RWY 13L

ILS approach from TPS:

Initial level: 5000. Depart TPS VOR on R 308 TPS VOR.

Descent from 5000 to 3500 to the turning point.

At D 12.0 TPS DME turn left complete the turn on heading 158°.

The farthest point of the turn arc may not be farther than D 17.0 TPS DME.

Further descent only on heading 158° to 2500 the interception of LOC then follow ILS.

Holding procedure:

Holding fix: TPS VOR.

Left hand holding pattern.

Maximum speed: 230 KIAS

Inbound track: 159°

Outbound track: 339°

Rate of turn: 3°/sec. or 25° bank angle

(whichever requires lesser bank)

Outbound timing: 1 min.

Minimum holding altitude: 5000 (ATC)

3000 for Missed approach (ATC)

Final approach descent (LOC only): 2.97°