

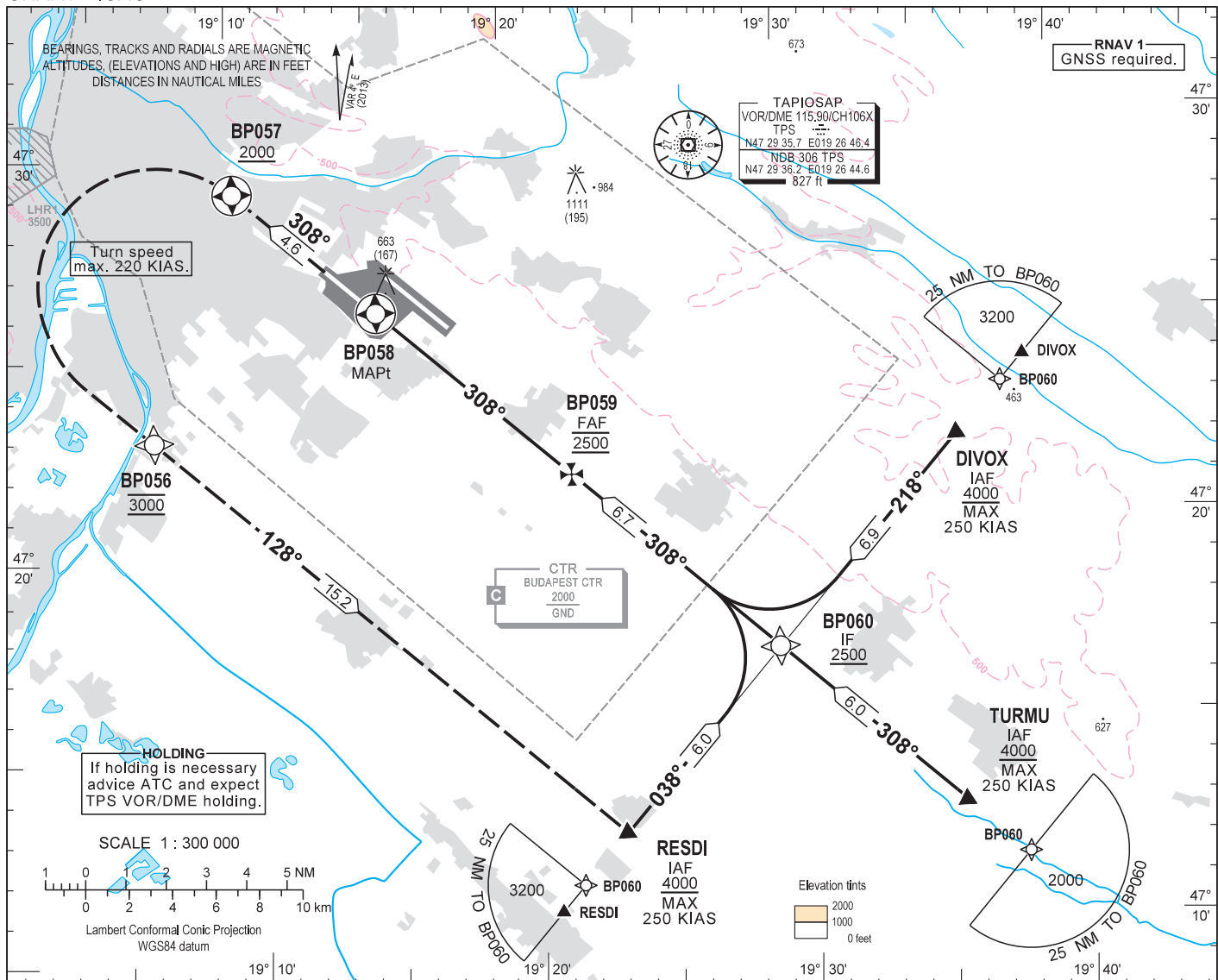
AIP HUNGARY

INSTRUMENT APPROACH CHART - ICAO

AERODROME ELEV 496  
HEIGHTS RELATED TO THR RWY 31L - ELEV 448

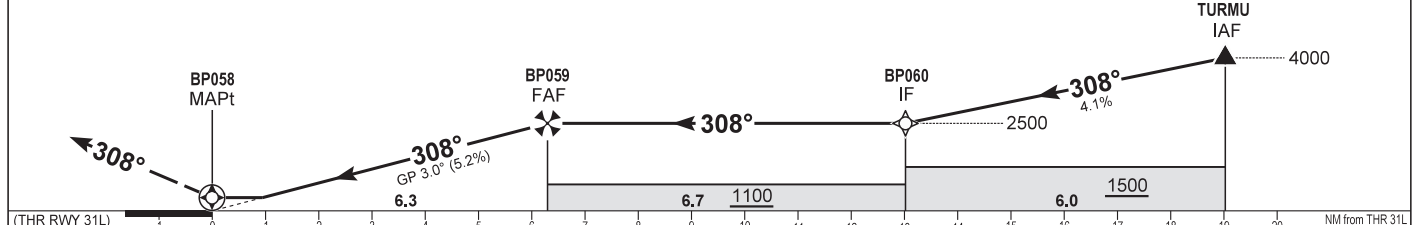
BUDAPEST APPROACH 129.700 ATIS 132.375 (117.300)  
122.975 BUDAPEST TOWER 118.100  
119.500 BUDAPEST GROUND 121.900

BUDAPEST/LISZT FERENC  
RNAV<sub>(GNSS)</sub> RWY 31L  
(ACFT CAT A, B, C, D)



**MISSED APPROACH**  
Climb to 3000 on RWY track 308°.  
Cross BP057 at 2000 or above.  
After crossing BP057 turn left to course 128° inbound BP056.  
Maximum turning speed: 220 KIAS.  
Reach 3000 by BP056 and continue on track 128° to RESDI.

TRANSITION ALTITUDE  
10000



CAT OF ACFT		A	B	C	D
OCA (H) STRAIGHT-IN	LNAV	2.5% macg 1420 (972)	1450 (1002)	1470 (1022)	1490 (1042)
		5.7% macg 910 (462)			
CIRCLING		980	1190	1310	1510

DIST THR / RWY 31L	NM	6.0	5.0	4.0	3.0	2.0
ALTITUDE	ft	2410	2090	1780	1460	1140
Timing not authorised for defining the MAPt.						

GS	kt	80	100	120	140	160	180
BP059 - BP058 (6.3 NM)	min:sec	4:43	3:47	3:09	2:42	2:22	2:06
Rate of descent (326.2 ft/NM)	ft/min	430	540	650	760	860	970

AD 2 LHBP INSTRUMENT APPROACH CHART RNAV<sub>(GNSS)</sub> RWY 31L

SEQ	P&T	Name	Latitude	Longitude	FlyOver	Bearing/ (Len Dur)	Turn Direction	Altitude (FT)	IAS (KT)	VPA/RDH (FT)	RNP (NM)
010	IF	RESDI(IAF)	N47 12 38.0	E019 23 11.1	N	...	...	+4000	-250	...	...
020	TF	BP060(IF)	N47 17 03.4	E019 29 08.0	N	042 T/6.00 NM	...	+2500	...	-2.4°	...
010	IF	DIVOX(IAF)	N47 22 06.5	E019 35 57.5	N	...	...	+4000	-250	...	...
020	TF	BP060(IF)	N47 17 03.4	E019 29 08.0	N	222 T/6.86 NM	...	+2500	...	-2.1°	...
010	IF	TURMU(IAF)	N47 13 00.0	E019 35 37.3	N	...	...	+4000	-250	...	...
020	TF	BP060(IF)	N47 17 03.4	E019 29 08.0	N	312 T/6.00 NM	...	+2500	...	-2.4°	...
010	IF	BP060(IF)	N47 17 03.4	E019 29 08.0	N	...	...	+2500	...	...	...
020	TF	BP059(FAF)	N47 21 35.4	E019 21 51.1	N	312 T/6.72 NM	...	@2500	...	-0.0°	...
030	TF	BP058(LTP/FTP)	N47 25 49.7	E019 15 00.9	Y	312 T/6.29 NM	...	+497	...	-3.0°/15	...
010	IF	BP058(MAPt)	N47 25 49.7	E019 15 00.9	Y	...	...	+910	...	...	...
020	TF	BP057	N47 28 56.5	E019 09 58.6	Y	312 T/4.62 NM	...	+2000	...	3.3°	...
030	CF	BP056	N47 22 52.0	E019 06 41.0	N	132 T/11.74 NM	L	@3000	-220	0.8°	...
040	TF	RESDI	N47 12 38.0	E019 23 11.1	Y	132 T/15.20 NM	...	@3000	...	0.0°	...

Final approach descent: 3.0°.