

AIP HUNGARY

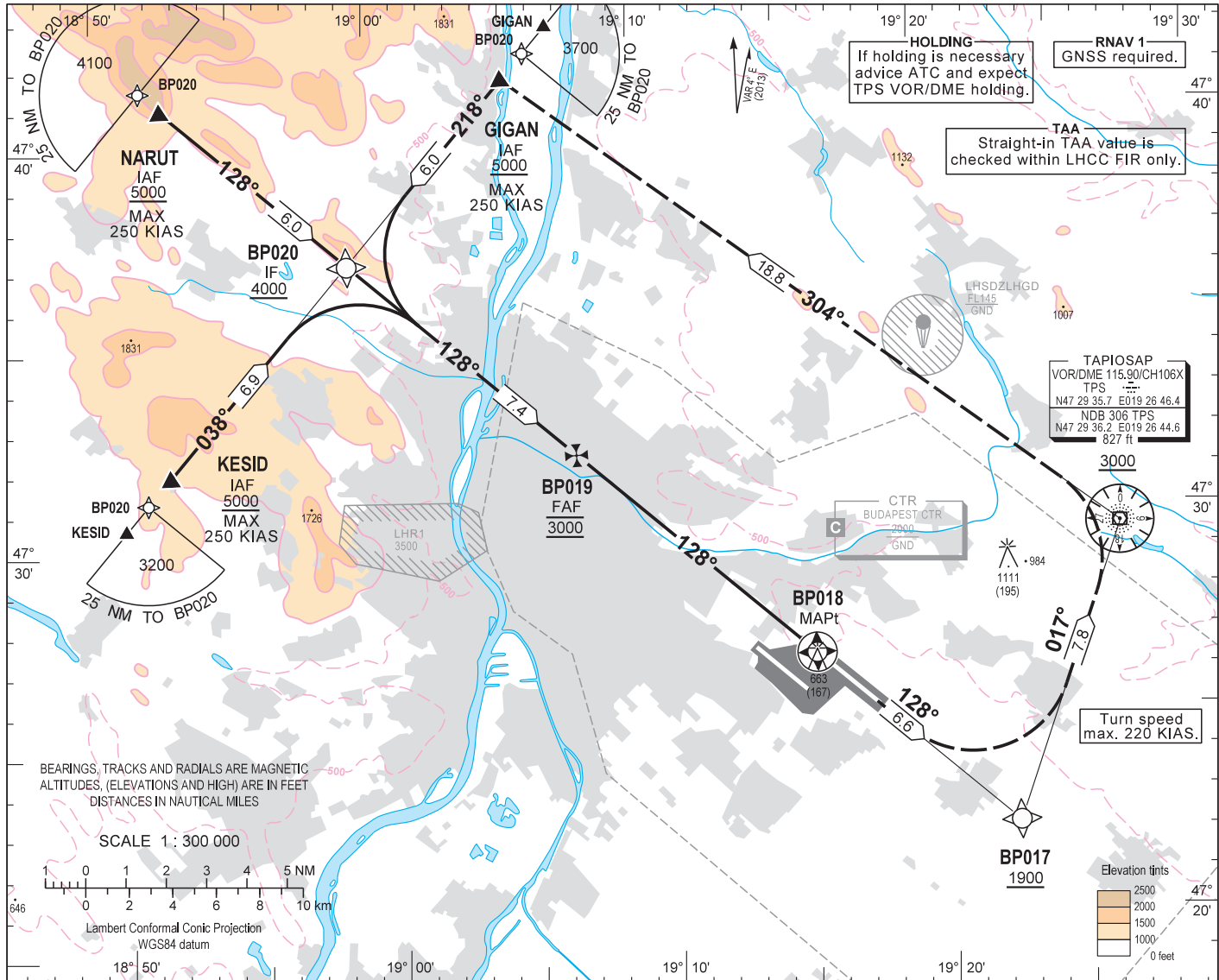
INSTRUMENT  
APPROACH  
CHART - ICAO

AERODROME ELEV 496  
HEIGHTS RELATED TO  
THR RWY 13L - ELEV 496

BUDAPEST APPROACH 129.700  
122.975  
119.500

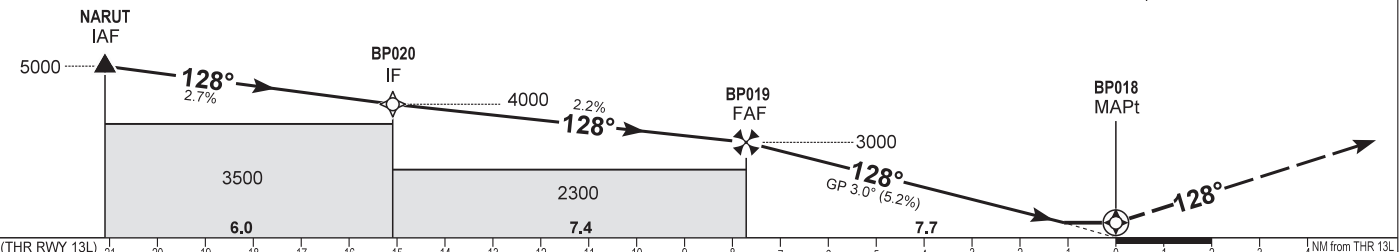
ATIS 132.375 (117.300)  
BUDAPEST TOWER 118.100  
BUDAPEST GROUND 121.900

BUDAPEST/LISZT FERENC  
RNAV<sub>(GNSS)</sub> RWY 13L  
(ACFT CAT A, B, C, D)



TRANSITION ALTITUDE  
10000

MISSED APPROACH  
Climb 4000 and continue on RWY track 128°.  
Cross BP017 (fly-by) waypoint at 1900 or above and turn left to track 017° inbound TPS.  
Maximum turning speed 220 KIAS.  
From TPS proceed to GIGAN on track 304°.



CAT OF ACFT		A	B	C	D
OCA (H) STRAIGHT-IN	LNAV	2.5% macg 1030 (534)	1060 (564)	1080 (584)	1100 (604)
		3.1% macg 860 (364)	900 (404)	920 (424)	
CIRCLING		980	1190	1310	1510

DIST THR / RWY 13L	NM	7.0	6.0	5.0	4.0	3.0	2.0
ALTITUDE	ft	2780	2460	2140	1820	1510	1190

Timing not authorised for defining the MAPt.

GS	kt	80	100	120	140	160	180
BP019 - BP018 (7.7 NM)	min:sec	5:47	4:38	3:52	3:19	2:54	2:35
Rate of descent (326.2 ft/NM)	ft/min	430	540	650	760	860	970

**AD 2 LHBP INSTRUMENT APPROACH CHART RNAV<sub>(GNSS)</sub> RWY 13L**

SEQ	P&T	Name	Latitude	Longitude	FlyOver	Bearing/ (Len Dur)	Turn Direction	Altitude (FT)	IAS (KT)	VPA/RDH (FT)	RNP (NM)
010	IF	GIGAN(IAF)	N47 41 17.3	E019 04 58.0	N	...	...	+5000	-250	...	...
020	TF	BP020(IF)	N47 36 51.5	E018 58 59.1	N	222 T/6.00 NM	...	+4000	...	-1.6°	...
010	IF	KESID(IAF)	N47 31 47.2	E018 52 10.0	N	...	...	+5000	-250	...	...
020	TF	BP020(IF)	N47 36 51.5	E018 58 59.1	N	042 T/6.86 NM	...	+4000	...	-1.4°	...
010	IF	NARUT(IAF)	N47 40 52.8	E018 52 24.1	N	...	...	+5000	-250	...	...
020	TF	BP020(IF)	N47 36 51.5	E018 58 59.1	N	132T/6.00 NM	...	+4000	...	-1.6°	...
010	IF	BP020(IF)	N47 36 51.5	E018 58 59.1	N	...	...	+4000	...	...	...
020	TF	BP019(FAF)	N47 31 54.7	E019 07 02.8	N	132 T/7.37 NM	...	@3000	...	-1.3°	...
030	TF	BP018(LTP/FTP)	N47 26 43.5	E019 15 27.2	Y	132 T/7.71 NM	...	+545	...	-3.0°/15	...
010	IF	BP018(MAPt)	N47 26 43.5	E019 15 27.2	Y	...	...	+860	...	...	...
020	TF	BP017	N47 22 18.6	E019 22 34.5	N	132 T/6.55 NM	...	+1900	...	1.8°	...
030	TF	TPS	N47 29 35.7	E019 26 46.4	N	021 T/7.83 NM	L	+3000	-220	1.4°	...
040	TF	GIGAN	N47 41 17.3	E019 04 58.0	Y	308 T/18.83 NM	L	@4000	...	0.5°	...

Final approach descent: 3.0°.