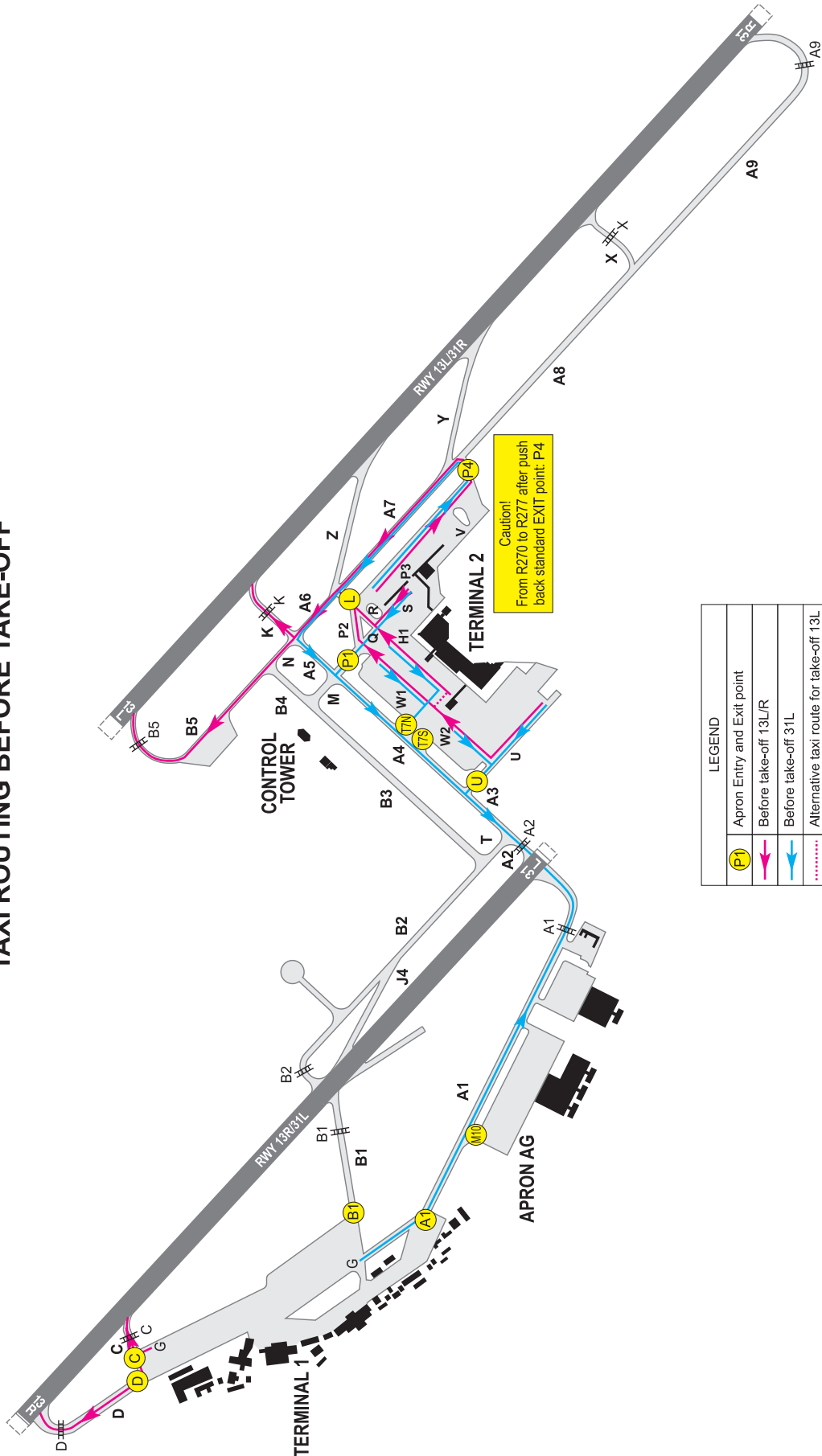


APPENDIX 2 TO AERODROME CHART - ICAO  
TAXI PROCEDURES FOR DEPARTING AIRCRAFT  
(PARALLEL RWY OPERATION)

BUDAPEST/LISZT FERENC

TAXI ROUTING BEFORE TAKE-OFF



LEGEND	
(F)	Apron Entry and Exit point
(Pink line)	Before take-off 13L/R
(Blue line)	Before take-off 31L
(Light blue line)	Alternative taxi route for take-off 13L
(D symbol)	Runway holding point

**AD 2 LIST OF AVAILABLE TAXI CLEARANCES FOR DEPARTING AIRCRAFT  
ISSUED BY ATC AND APRON UNIT**

Departures on RWY	From stands/gates	EXIT POINTS	Taxi route on Apron(taxilane or TWY segments) to be followed	HOLDING POINTS	Taxi route on the maneuvering area (TWY segments) to be followed	Terminal	Remarks		
13L	31 - 34* - 35	L	U-W2-W1-P2-L	K or B5 on request	L-A6-K or L-A6-N-B5	2	U after coordination; * Code D, E exit via U		
	38 - 40*		H1-R-L				T7N after coordination; * Code E exit via T7N only		
	42 - 43		W1-P2-L				P1 after coordination		
	R210 - R212 R224 - R227						T7N or P1 after coordination		
	36 - 37 R220 - R223						W2-W1-P2-L	P1 after coordination	
	44 - 45	S-R-L	P4		P3-P4		P4-A7-A6-K or P4-A7-A6-N-B5	L after coordination; * Code D, E exit P4 only	
	R270 - R277	V-P4							
	R278 - R279*								
13R	1 - 27 R110 - R117* 107 - 109 R150 - R151	C	G	C	C	1	* Code E, F exit via B1 only		
		D	G	D	D				
	G130 - G141	M10/C	Apron taxilane/G	C	C	Follow the instructions			
		M10/D		D	D				
31L	31 - 35	U	U	A2	U-A3-A2	2			
	36 - 37 R220 - R223		W2-U						
	38 - 40*	T7N	T7N		T7N-A4-A3-A2		* Code D via P1 only		
	42 - 43*		H1-T7N						
	R210 - R212 R224 - R227		W1-T7N						
	44 - 45	P1	S-Q-P1		P1-A4-A3-A2				
	R270 - R277	P4	P3-P4		P4-A7-A6-A5-A4-A3-A2		P1 after coordination; * Code D, E exit P4 only		
	R278 - R279*		V-P4						
	1 - 27 107 - 109 R110 - R117*	A1	G-A1		A1		A1	1	* Code D, E via B1 only
	G130 - G141	M10	Apron taxilane		A1 or B1 on request		A1 or B1	APRON AG	