

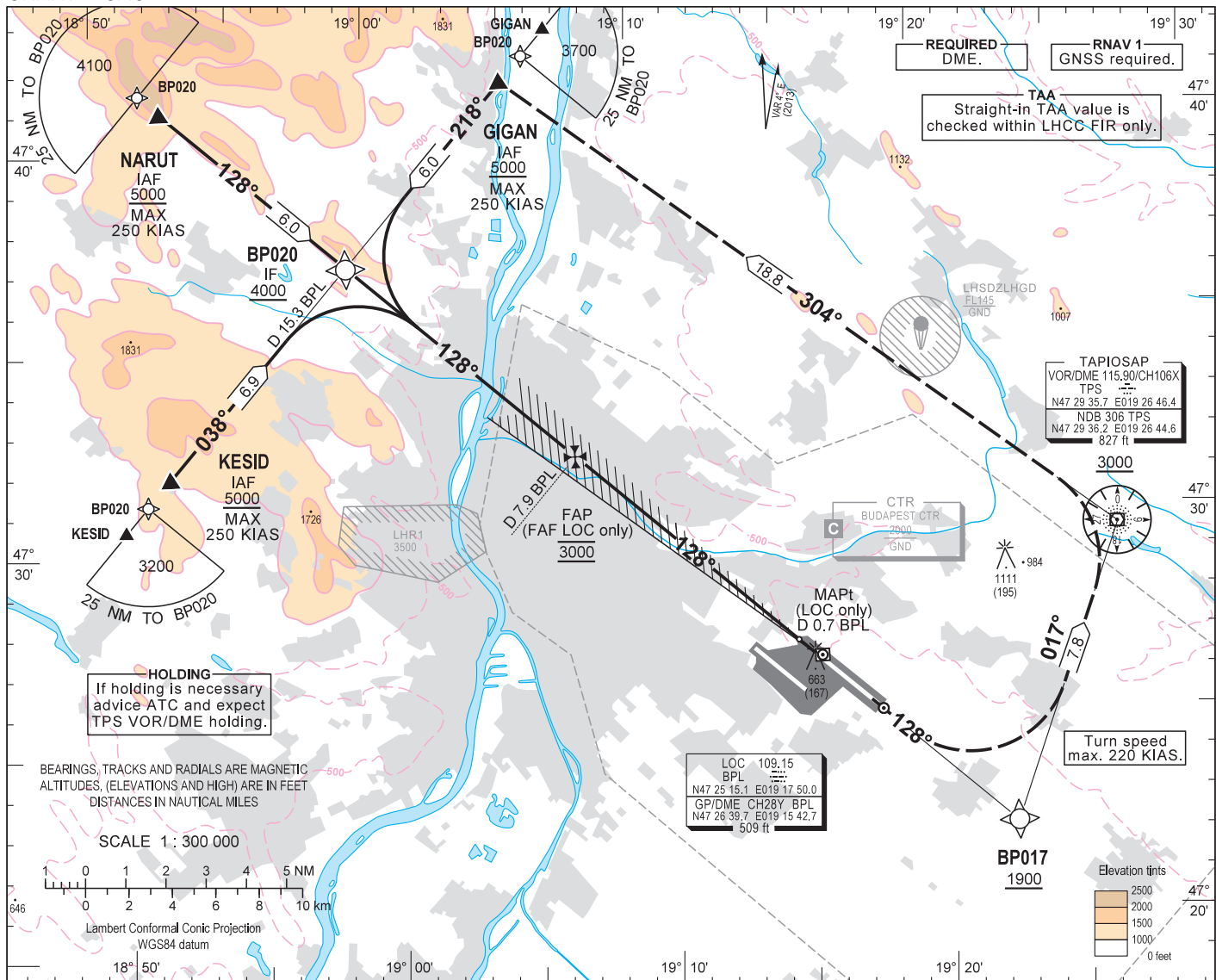
AIP HUNGARY

INSTRUMENT APPROACH CHART - ICAO

AERODROME ELEV 496
HEIGHTS RELATED TO THR RWY 13L - ELEV 496

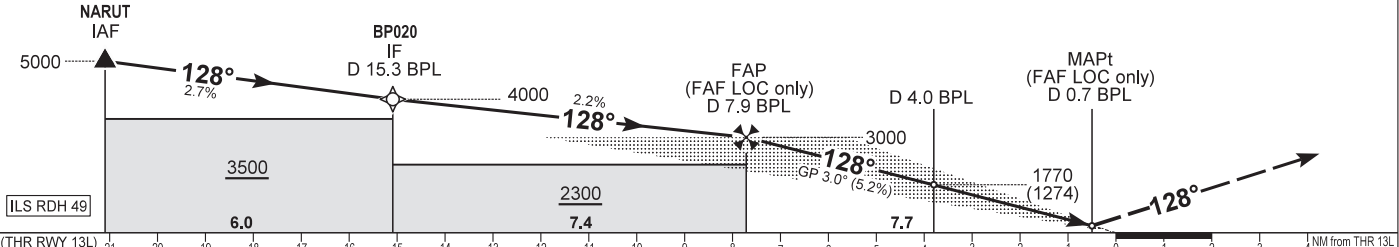
BUDAPEST APPROACH 129.700
122.975
119.500
ATIS 132.375 (117.300)
BUDAPEST TOWER 118.100
BUDAPEST GROUND 121.900

BUDAPEST/LISZT FERENC
ILS or LOC RWY 13L
(ACFT CAT A, B, C, D)



TRANSITION ALTITUDE
10000

MISSED APPROACH
Climb 4000 and continue on RWY track 128°.
Cross BP017 (fly-by) waypoint at 1900 or above and turn left to track 017° inbound TPS.
Maximum turning speed 220 KIAS.
From TPS proceed to GIGAN on track 304°.



CAT OF ACFT		A	B	C	D	DME BPL	NM	7.0	6.0	5.0	4.0	3.0	2.0	
OCA (H) STRAIGHT-IN	CAT I	2.5% macg	955 (459)	964 (468)	974 (478)	984 (488)	DIST THR / RWY 13L	NM	6.8	5.8	4.8	3.8	2.8	1.8
		4.0% macg	657 (161)	669 (173)	677 (181)	687 (191)	ALTITUDE	ft	2730	2410	2090	1770	1460	1140
	CAT II	2.5% macg	866 (370)	882 (386)	896 (400)	909 (413)	Timing not authorised for defining the MAPt.							
		4.0% macg	566 (70)	579 (83)	589 (93)	599 (103)	GS	kt	80	100	120	140	160	180
	LOC	2.5% macg	950 (454)	980 (484)	1000 (504)	1020 (524)	FAP/FAF - THR 13L (7.7 NM)	min:sec	5:47	4:38	3:52	3:19	2:54	2:35
		3.8% macg	860 (364)		880 (384)		Rate of descent (324.8 ft/NM)	ft/min	430	540	640	750	860	970
CIRCLING		980	1190	1310	1510									

AD 2 LHBP INSTRUMENT APPROACH CHART ILS OR LOC RWY 13L

SEQ	P&T	Name	Latitude	Longitude	FlyOver	Bearing/ (Len Dur)	Turn Direction	Altitude (FT)	IAS (KT)	VPA/RDH (FT)	RNP (NM)
010	IF	GIGAN(IAF)	N47 41 17.3	E019 04 58.0	N	+5000	-250
020	TF	BP020(IF)	N47 36 51.5	E018 58 59.1	N	222 T/6.00 NM	...	+4000	...	-1.6°	...
010	IF	KESID(IAF)	N47 31 47.2	E018 52 10.0	N	+5000	-250
020	TF	BP020(IF)	N47 36 51.5	E018 58 59.1	N	042 T/6.86 NM	...	+4000	...	-1.4°	...
010	IF	NARUT(IAF)	N47 40 52.8	E018 52 24.1	N	+5000	-250
020	TF	BP020(IF)	N47 36 51.5	E018 58 59.1	N	132 T/6.00 NM	...	+4000	...	-1.6°	...
010	IF	BP020(IF)	N47 36 51.5	E018 58 59.1	N	+4000
020	CF	BP019(FAP)	N47 31 54.7	E019 07 02.8	N	132 T/7.37 NM	...	@3000	...	-1.3°	...
030	CF	BP018(LTP/FTP)	N47 26 43.5	E019 15 27.2	Y	132 T/7.71 NM	...	+545	...	-3.0°/15	...
010	IF	MAPt (LOC only)	N47 27 04.7	E019 14 53.0	Y	+860
020	TF	BP017	N47 22 18.6	E019 22 34.5	N	132 T/6.55 NM	...	+1900	...	2.3°	...
030	TF	TPS	N47 29 35.7	E019 26 46.4	N	021 T/7.83 NM	L	+3000	-220	1.0°	...
040	TF	GIGAN	N47 41 17.3	E019 04 58.0	Y	308 T/18.83 NM	L	@4000	...	0.5°	...

Final approach descent: 3.0°.
LOC only descent: 2.99°.