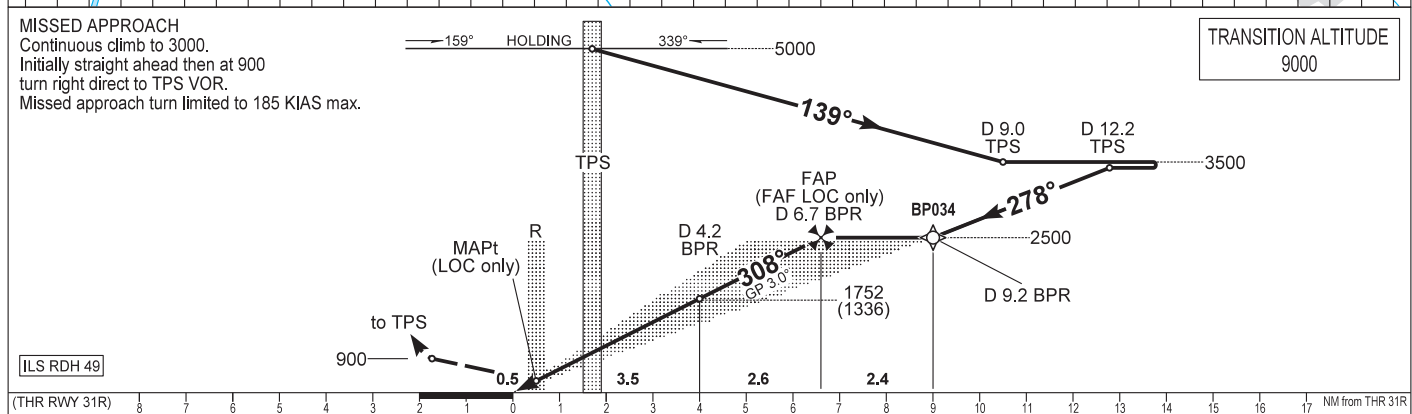
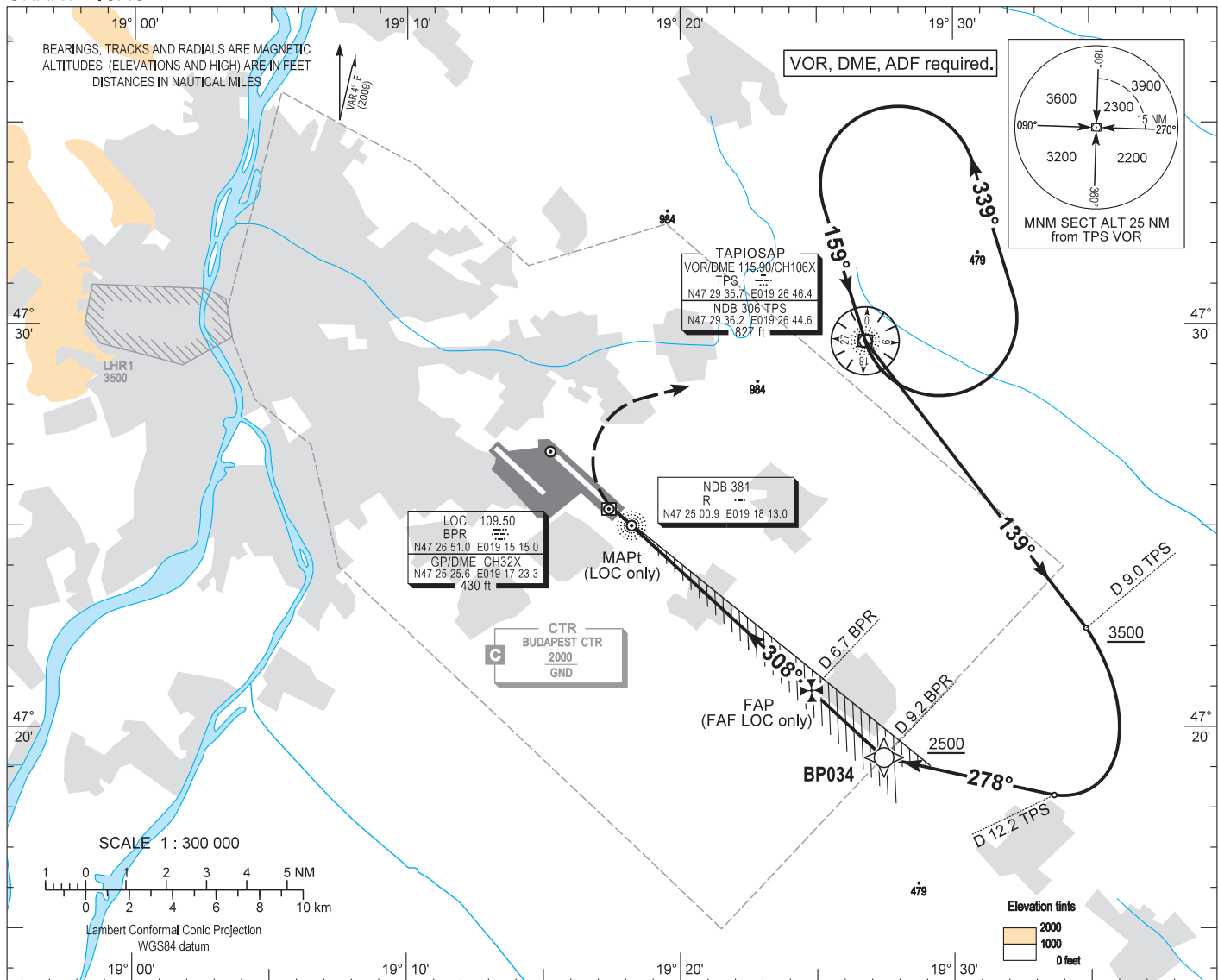


AIP HUNGARY

INSTRUMENT APPROACH CHART - ICAO
AERODROME ELEV 496
HEIGHTS RELATED TO THR RWY 31R - ELEV 416

BUDAPEST APPROACH 129.700 ATIS 132.375 (117.300)
122.975 BUDAPEST TOWER 118.100
119.500 BUDAPEST GROUND 121.900

BUDAPEST/LISZT FERENC
ILS or LOC RWY 31R
(ACFT CAT A, B, C, D)



OCA (OCH)		A	B	C	D	GROUND SPEED							
STRAIGHT-IN APPROACH	Cat. I.	Press. ALT	580 (165)	590 (175)	600 (185)	610 (195)	kt						
	Cat. II.	Rdo. ALT	(75)	(92)	(105)	(118)	FPM						
	Cat. II.	Rdo. ALT	(53)	(65)	(82)	(95)	60	90	120	150	180		
	LOC only		800 (380)				320	480	635	795	955		
CIRCLING APPROACH		ft AMSL	950	1100	1280	1460	Timing not authorized to define the MAPt.						
		VIS. m	1900	2800	3700	4600	DIST FM DME	NM	2.0	3.0	4.0	5.0	6.0
							ALT (HGT)	ft	1050 (640)	1370 (960)	1690 (1270)	2010 (1590)	2330 (1910)

MAPt at R NDB.

AD 2 LHBP INSTRUMENT APPROACH CHART ILS OR LOC RWY 31R

ILS approach from TPS:

Initial level: 5000.

Depart TPS VOR on R 139 and descend to 3500.

At D 9.0 TPS DME fix turn right heading 278° and descend to 2500 to intercept and follow ILS.

Holding procedure:

Holding fix: TPS VOR.

Left hand holding pattern.

Maximum speed: 230 KIAS

Inbound track: 159°

Outbound track: 339°

Rate of turn: 3°/sec. or 25° bank angle

(whichever requires lesser bank)

Outbound timing: 1 min.

Minimum holding altitude: 5000 (ATC)

3000 for Missed approach (ATC)

Final approach descent (LOC only): 2.90°