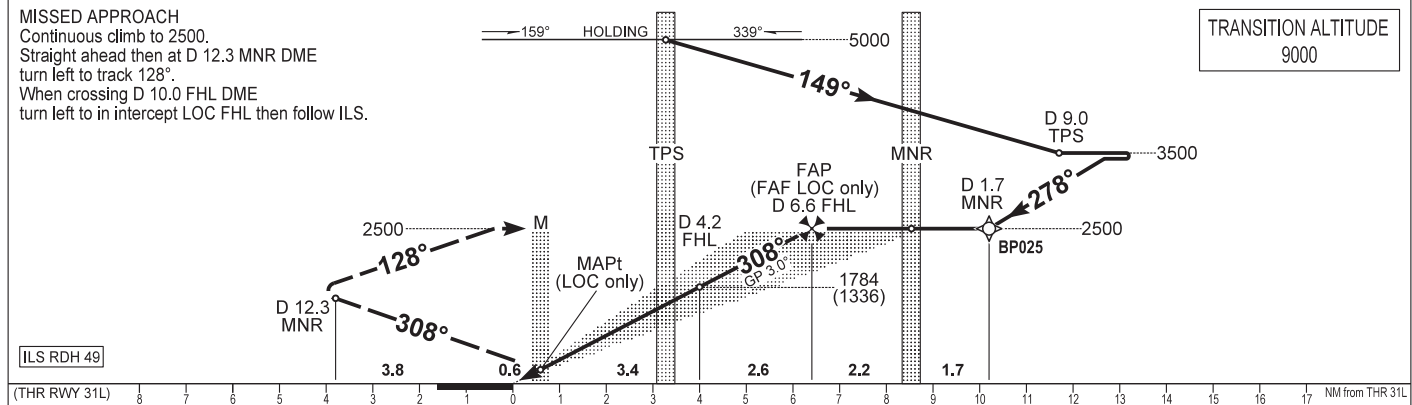
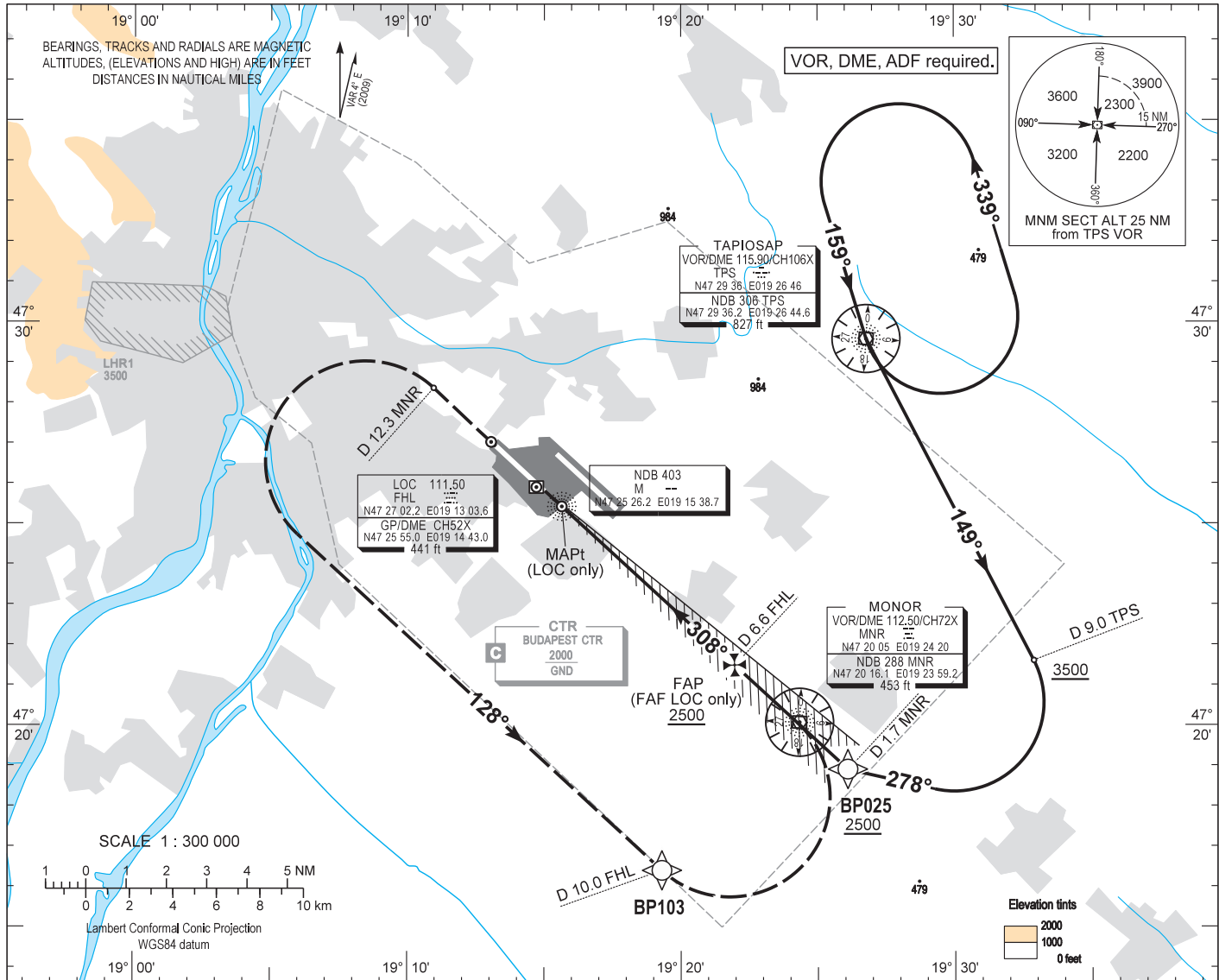


AIP HUNGARY

INSTRUMENT APPROACH CHART - ICAO  
AERODROME ELEV 496  
HEIGHTS RELATED TO THR RWY 31L - ELEV 448

BUDAPEST APPROACH 129.700  
122.975  
119.500  
ATIS 132.375 (117.300)  
BUDAPEST TOWER 118.100  
BUDAPEST GROUND 121.900

BUDAPEST/LISZT FERENC  
ILS or LOC RWY 31L  
(ACFT CAT A, B, C, D)



OCA (OCH)		A	B	C	D	GROUND SPEED							
STRAIGHT-IN APPROACH	Cat. I.	Press. ALT	584 (135)	594 (145)	604 (155)	614 (165)	kt						
	Cat. II.	Rdo. ALT	(46)	(63)	(76)	(89)	FPM						
	LOC only		755 (310)				Timing not authorized to define the MAPt.						
CIRCLING APPROACH	ft AMSL	950	1100	1280	1460	DIST FM DME	NM	1.0	2.0	3.0	4.0	5.0	6.0
	VIS. m	1900	2800	3700	4600	ALT (HGT)	ft	770 (320)	1080 (640)	1400 (960)	1720 (1270)	2040 (1590)	2360 (1910)

MAPt at M NDB.

## AD 2 LHBP INSTRUMENT APPROACH CHART ILS OR LOC RWY 31L

### ILS approach from TPS:

Initial level: 5000.

Depart TPS VOR on R 149 and descend to 3500.

At D 9.0 TPS DME fix turn right heading 278° and descend to 2500 to intercept and follow ILS.

### Holding procedure:

Holding fix: TPS VOR.

Left hand holding pattern.

Maximum speed: 230 KIAS

Inbound track: 159°

Outbound track: 339°

Rate of turn: 3°/sec. or 25° bank angle  
(whichever requires lesser bank)

Outbound timing: 1 min.

Minimum holding altitude: 5000 (ATC)

Final approach descent (LOC only): 2.95°