

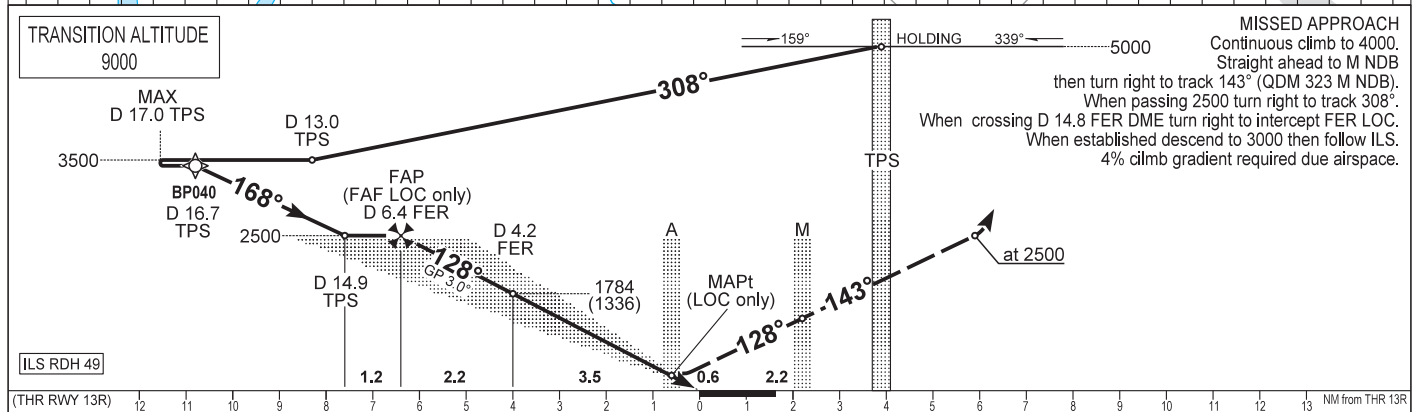
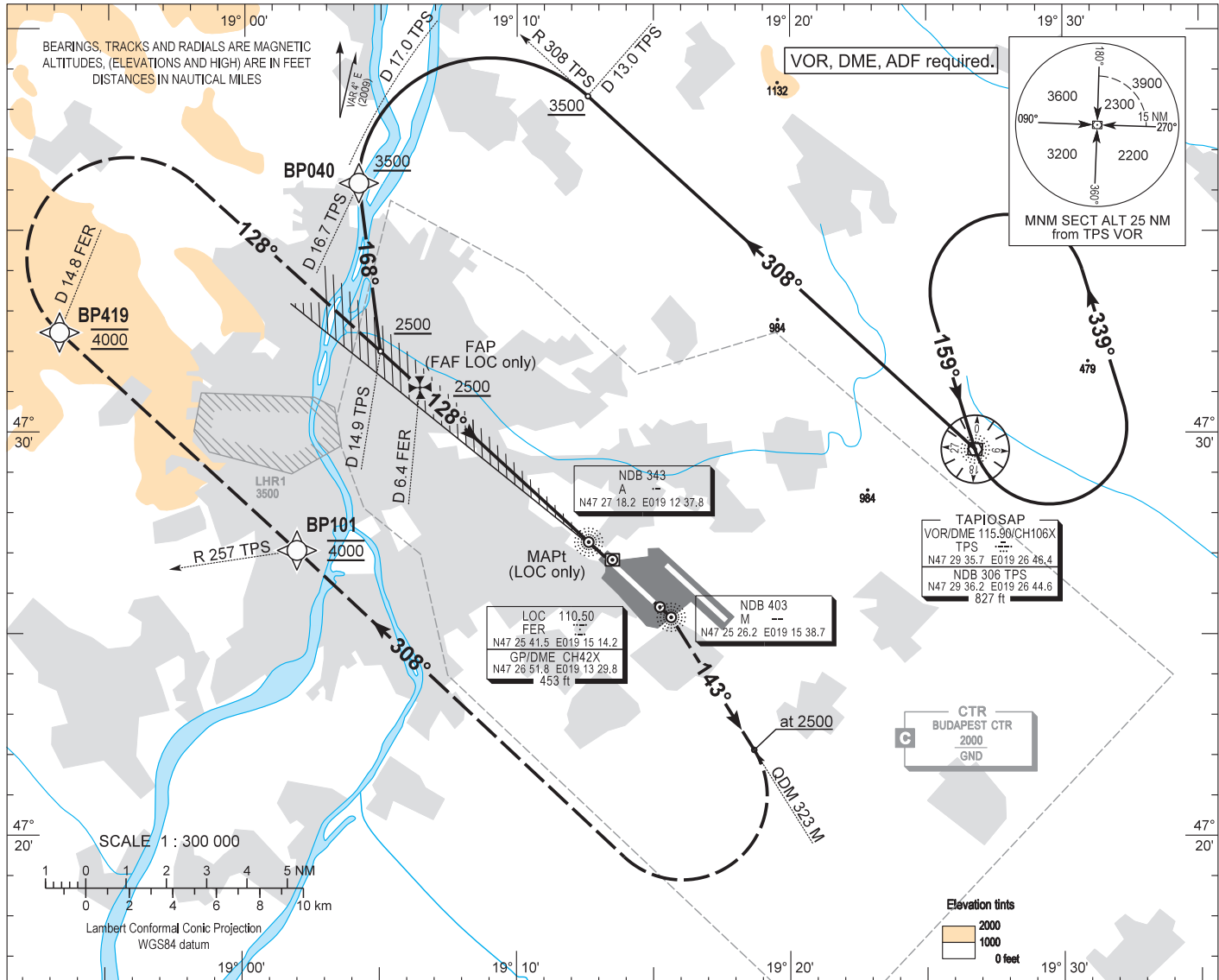
AIP HUNGARY

INSTRUMENT  
APPROACH  
CHART - ICAO

AERODROME ELEV 496  
HEIGHTS RELATED TO  
THR RWY 13R - ELEV 448

BUDAPEST APPROACH 129.700 ATIS 132.375 (117.300)  
122.975 BUDAPEST TOWER 118.100  
119.500 BUDAPEST GROUND 121.900

BUDAPEST/LISZT FERENC  
ILS or LOC RWY 13R  
(ACFT CAT A, B, C, D)



OCA (OCH)		A	B	C	D	GROUND SPEED					
STRAIGHT-IN APPROACH	Cat. I.	Press. ALT	607 (158)	617 (168)	627 (178)	638 (188)	kt				
	Cat. II.	Rdo. ALT	(69)	(86)	(99)	(112)	Rate of descent (5.2%)				
	LOC only		920 (475)				FPM				
CIRCLING APPROACH	ft AMSL	950	1100	1280	1460	Timing not authorized to define the MAPt.					
	VIS. m	1900	2800	3700	4600	DIST FM DME					
MAPt at A NDB.						ALT (HGT)					
						ft	2360 (1910)	2040 (1590)	1720 (1270)	1400 (960)	1080 (640)

## AD 2 LHBP INSTRUMENT APPROACH CHART ILS OR LOC RWY 13R

### ILS approach from TPS:

Initial level: 5000. Depart TPS VOR on R 308 TPS VOR.

Descent from 5000 to 3500 to the turning point.

At D 13.0 TPS DME turn left, complete the turn on heading 168°.

The farthest point of the turn arc may not be farther than D 17.0 TPS DME.

Further descent only on heading 168° to 2500 to the interception of LOC then follow ILS.

### Holding procedure:

Holding fix: TPS VOR.

Left hand holding pattern.

Maximum speed: 230 KIAS

Inbound track: 159°

Outbound track: 339°

Rate of turn: 3°/sec. or 25° bank angle

(whichever requires lesser bank)

Outbound timing: 1 min.

Minimum holding altitude: 5000 (ATC)

Final approach descent (LOC only): 2.94°