

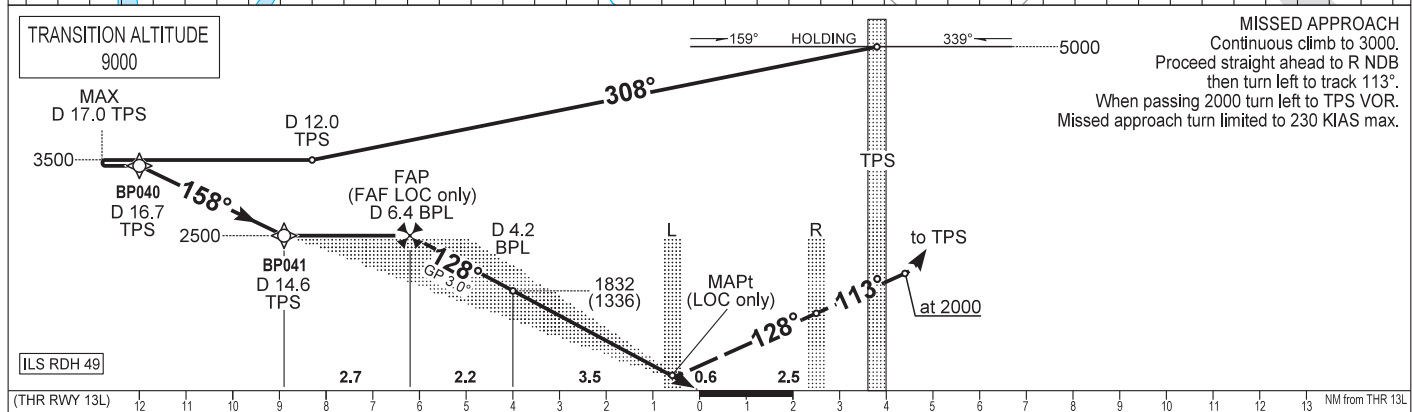
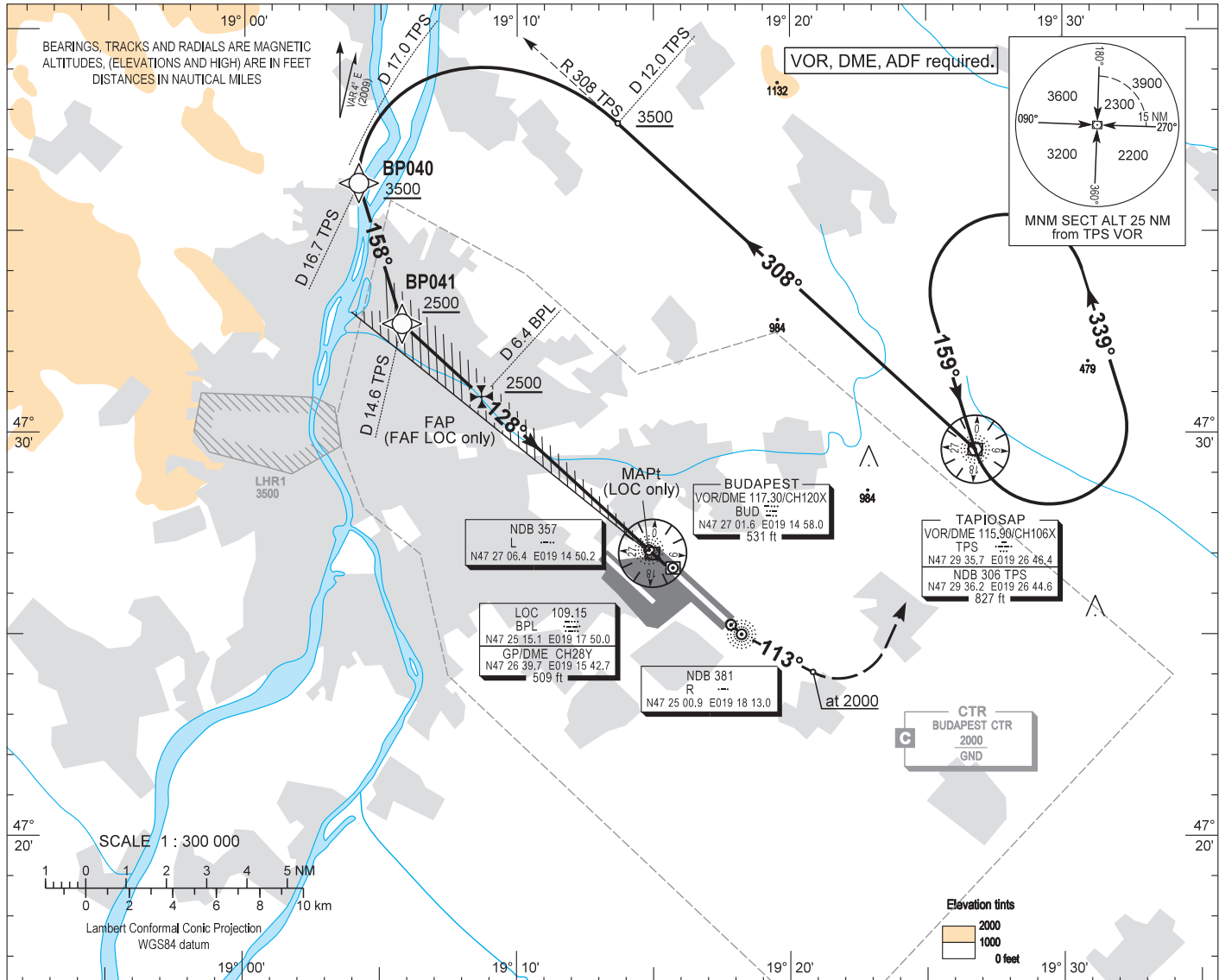
AIP HUNGARY

INSTRUMENT APPROACH CHART - ICAO

AERODROME ELEV 496
HEIGHTS RELATED TO THR RWY 13L - ELEV 496

BUDAPEST APPROACH 129.700 ATIS 132.375 (117.300)
122.975 BUDAPEST TOWER 118.100
119.500 BUDAPEST GROUND 121.900

BUDAPEST/LISZT FERENC
ILS or LOC RWY 13L
(ACFT CAT A, B, C, D)



OCA (OCH)		A	B	C	D	GROUND SPEED							
STRAIGHT-IN APPROACH	Cat. I.	Press. ALT	630 (135)	640 (145)	650 (155)	660 (165)	kt						
	Cat. II.	Rdo. ALT	(46)	(63)	(76)	(89)	FPM						
	LOC only		825 (330)				Timing not authorized to define the MAPt.						
CIRCLING APPROACH		ft AMSL	950	1100	1280	1460	DIST FM DME	NM	6.0	5.0	4.0	3.0	2.0
		VIS. m	1900	2800	3700	4600	ALT (HGT)	ft	2410 (1910)	2090 (1590)	1770 (1270)	1450 (960)	1130 (640)

MAPt at L NDB.

AD 2 LHBP INSTRUMENT APPROACH CHART ILS OR LOC RWY 13L

ILS approach from TPS:

Initial level: 5000. Depart TPS VOR on R 308 TPS VOR.

Descent from 5000 to 3500 to the turning point.

At D 12.0 TPS DME turn left complete the turn on heading 158°.

The farthest point of the turn arc may not be farther than D 17.0 TPS DME.

Further descent only on heading 158° to 2500 the interception of LOC then follow ILS.

Holding procedure:

Holding fix: TPS VOR.

Left hand holding pattern.

Maximum speed: 230 KIAS

Inbound track: 159°

Outbound track: 339°

Rate of turn: 3°/sec. or 25° bank angle

(whichever requires lesser bank)

Outbound timing: 1 min.

Minimum holding altitude: 5000 (ATC)

3000 for Missed approach (ATC)

Final approach descent (LOC only): 2.97°