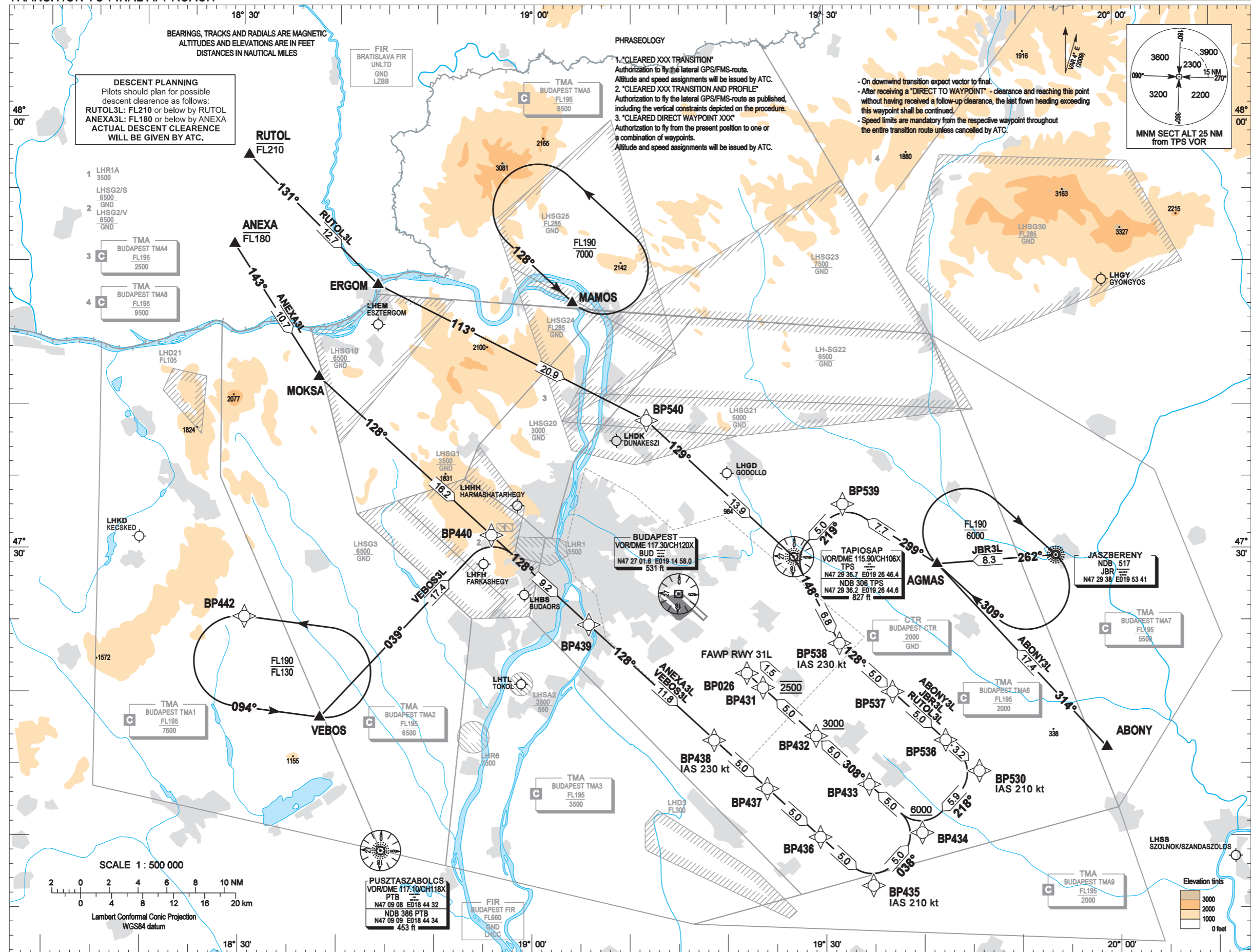


GPS/FMS RNAV ARRIVAL CHART -
TRANSITION TO FINAL APPROACH

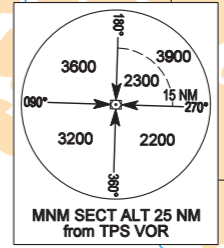
TRANSITION ALTITUDE
9000

ATIS	132.375 (117.300)	FERIHEGY TOWER	118.100
BUDAPEST APP	129.700 122.975	FERIHEGY GROUND	121.900
BUDAPEST DIRECTOR	119.500	FERIHEGY DELIVERY	134.550

BUDAPEST/LISZT FERENC
RWY 31L



- RUTOL3L RUTOL (FL210) -
ERGOM -
BP540 -
TPS -
BP538 (IAS 230 kt) -
BP537 -
BP536 -
BP530 (IAS 210 kt) -
BP434 (6000 +) -
BP433 -
BP432 (3000 +) -
BP431 (2500) -
BP026 (FAWP RWY 31L)
- JBR3L JBR -
AGMAS -
BP539 -
TPS -
BP538 (IAS 230 kt) -
BP537 -
BP536 -
BP530 (IAS 210 kt) -
BP434 (6000 +) -
BP433 -
BP432 (3000 +) -
BP431 (2500) -
BP026 (FAWP RWY 31L)
- ABONY3L ABONY -
AGMAS (BP500) -
BP539 -
TPS -
BP538 (IAS 230 kt) -
BP537 -
BP536 -
BP530 (IAS 210 kt) -
BP434 (6000 +) -
BP433 -
BP432 (3000 +) -
BP431 (2500) -
BP026 (FAWP RWY 31L)
- VEBOS3L VEBOS -
BP440 -
BP439 -
BP438 (IAS 230 kt) -
BP437 -
BP436 -
BP435 (IAS 210 kt) -
BP434 (6000 +) -
BP433 -
BP432 (3000 +) -
BP431 (2500) -
BP026 (FAWP RWY 31L)
- ANEXA3L ANEXA (FL180) -
MOKSA -
BP440 -
BP439 -
BP438 (IAS 230 kt) -
BP437 -
BP436 -
BP435 (IAS 210 kt) -
BP434 (6000 +) -
BP433 -
BP432 (3000 +) -
BP431 (2500) -
BP026 (FAWP RWY 31L)



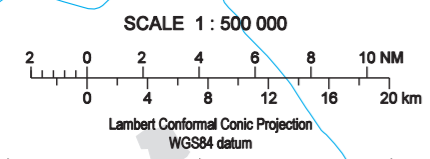
PHRASEOLOGY

- "CLEARED XXX TRANSITION"
Authorization to fly the lateral GPS/FMS-route. Altitude and speed assignments will be issued by ATC.
- "CLEARED XXX TRANSITION AND PROFILE"
Authorization to fly the lateral GPS/FMS-route as published, including the vertical constraints depicted on the procedure. Altitude and speed assignments will be issued by ATC.
- "CLEARED DIRECT WAYPOINT XXX"
Authorization to fly from the present position to one or a combination of waypoints. Altitude and speed assignments will be issued by ATC.

- On downwind transition expect vector to final.
- After receiving a "DIRECT TO WAYPOINT" - clearance and reaching this point without having received a follow-up clearance, the last flown heading exceeding this waypoint shall be continued.
- Speed limits are mandatory from the respective waypoint throughout the entire transition route unless cancelled by ATC.

DESCENT PLANNING
Pilots should plan for possible descent clearance as follows:
RUTOL3L: FL210 or below by RUTOL
ANEXA3L: FL180 or below by ANEXA
ACTUAL DESCENT CLEARANCE WILL BE GIVEN BY ATC.

- LHR1A 3500
LHSG2/S 6500
GND
- LHSG2/V 6500
GND
- TMA BUDAPEST TMA4 FL195 2500
- TMA BUDAPEST TMA8 FL195 9500



PUSZTASZABOLCS
VOR/DME 117.10/CH118X
PTB
N47 09 08 E018 44 32
NDB 386 PTB
N47 09 09 E018 44 34
453 ft

WAY POINT COORDINATES
SEE LHBP AD 2.22.



THE PAGE INTENTIONALLY LEFT BLANK